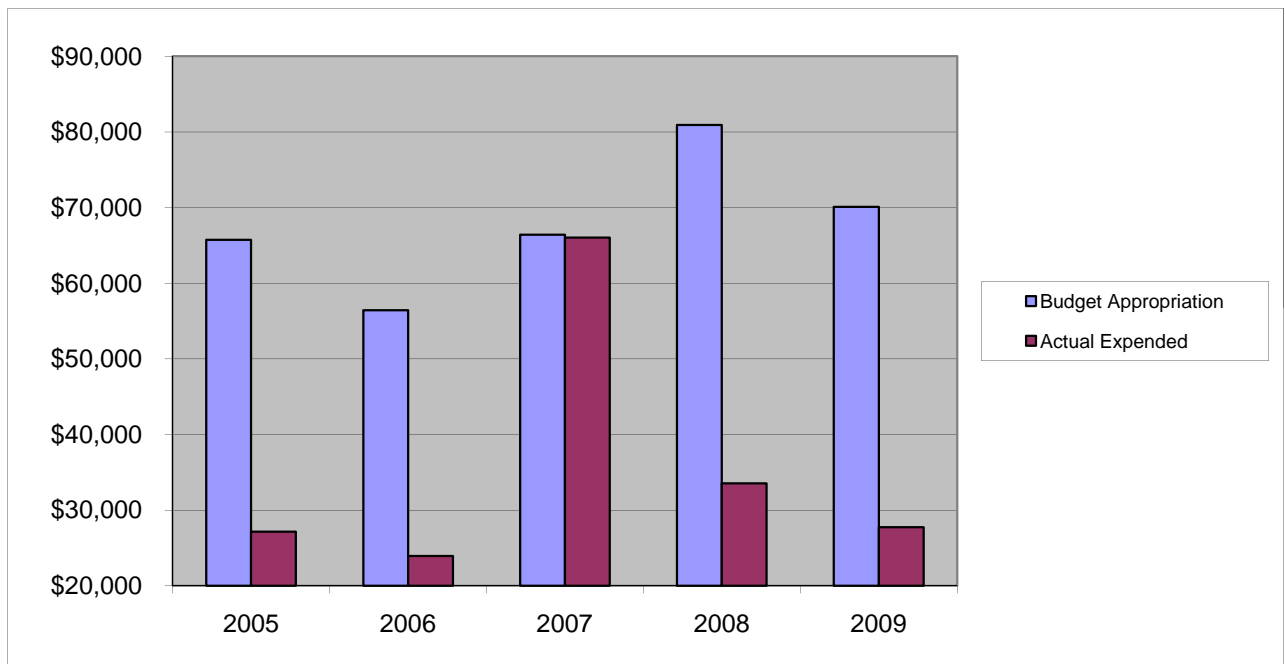


## ***COUNTY CLERK***

### ***Other Expenses - Elections***

	2005	2006	2007	2008	2009
Budget Appropriation	\$ 65,715.00	\$ 56,415.00	\$ 66,415.00	\$ 80,915.00	\$ 70,105.00
Actual Expended	\$ 27,139.71	\$ 23,936.25	\$ 66,046.72	\$ 33,526.05	\$ 27,738.74
Difference (App. - Exp.)	\$ 38,575.29	\$ 32,478.75	\$ 368.28	\$ 47,388.95	\$ 42,366.26
% Expended	41.3%	42.4%	99.4%	41.4%	39.6%
Total Budget Approp.	\$ 92,061,376	\$ 98,126,692	\$ 102,912,559	\$ 107,848,203	\$ 107,667,916
% of Total Budget Approp.	0.07%	0.06%	0.06%	0.08%	0.07%
Five Year Average (Mean) Budget Appropriation:					\$ 67,913.00
Five Year Average (Mean) Budget Expended:					\$ 35,677.49
Difference:					\$ 32,235.51



<b>2010 BUDGET APPROPRIATION:</b>	<b>\$ 70,055</b>
2009 Budget Appropriation	\$ 70,105
\$ Change	\$ (50)
% Change:	-0.1%

2010 Budget Appropriation	\$ 70,055
2005 Budget Appropriation	\$ 65,715
\$ Change	\$ 4,340
% Change	6.6%