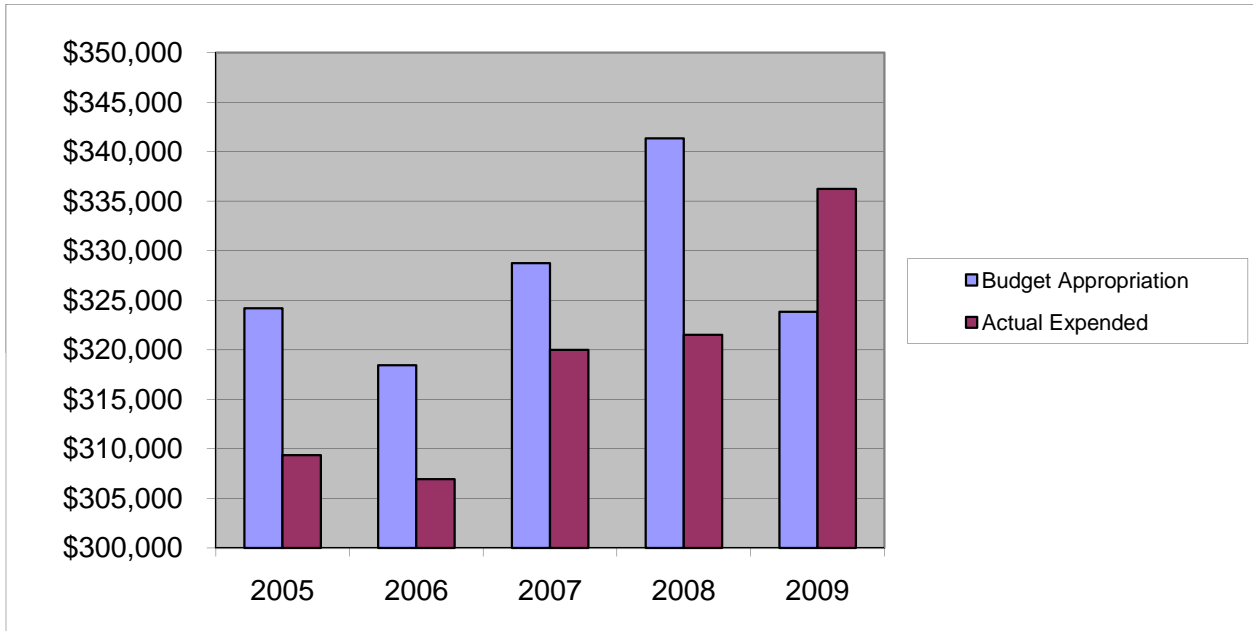


COUNTY TREASURER'S OFFICE
Salaries & Wages

	2005	2006	2007	2008	2009
Budget Appropriation	\$ 324,184.00	\$ 318,443.00	\$ 328,756.00	\$ 341,357.00	\$ 323,835.00
Actual Expended	\$ 309,359.61	\$ 306,931.25	\$ 320,001.80	\$ 321,513.32	\$ 336,251.99
Difference (App. - Exp.)	\$ 14,824.39	\$ 11,511.75	\$ 8,754.20	\$ 19,843.68	\$ (12,416.99)
% Expended	95.4%	96.4%	97.3%	94.2%	103.8%
Total Budget Approp.	\$ 92,061,376	\$ 98,126,692	\$ 102,912,559	\$ 107,848,203	\$ 107,667,916
% of Total Budget Approp.	0.35%	0.32%	0.32%	0.32%	0.30%
Five Year Average (Mean) Budget Appropriation:					\$ 327,315.00
Five Year Average (Mean) Budget Expended:					\$ 318,811.59
Difference:					\$ 8,503.41



2010 BUDGET APPROPRIATION:	\$ 380,148
2009 Budget Appropriation	\$ 323,835
\$ Change	\$ 56,313
% Change:	17.4%

2010 Budget Appropriation	\$ 380,148
2005 Budget Appropriation	\$ 324,184
\$ Change	\$ 55,964
% Change	17.3%