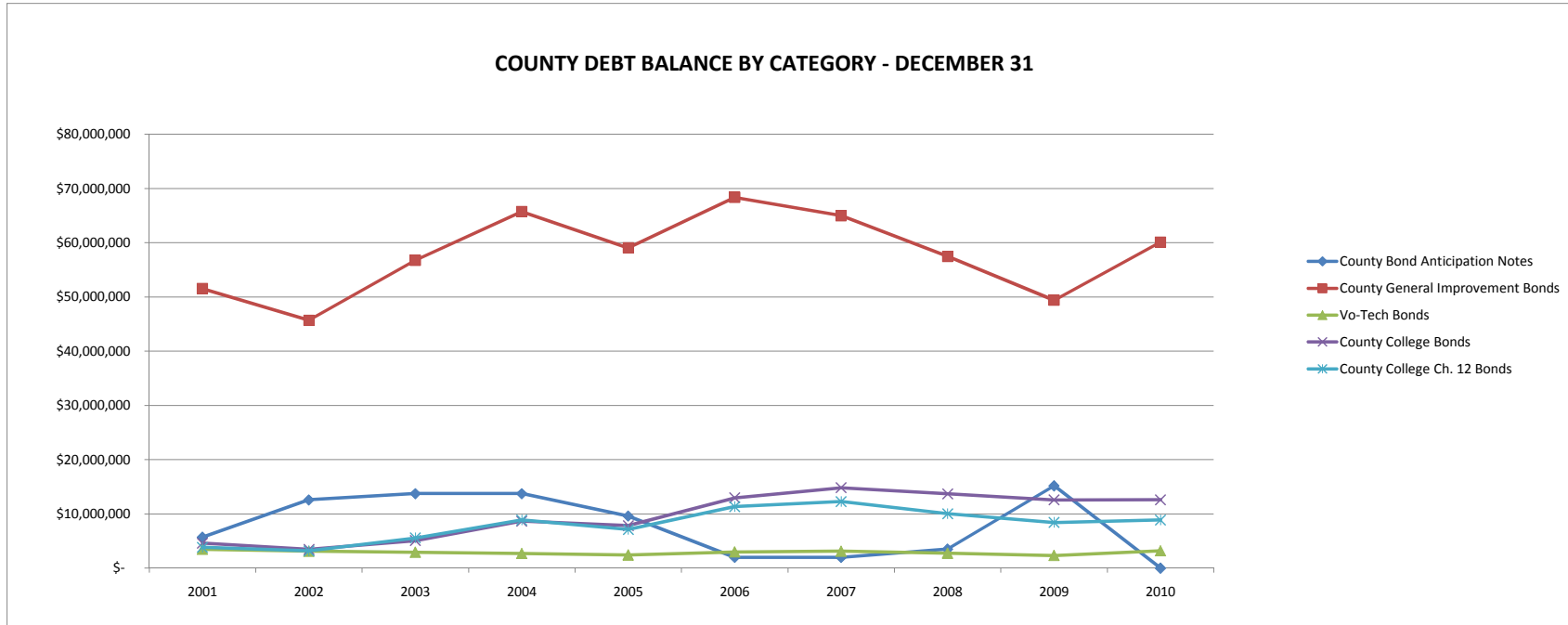
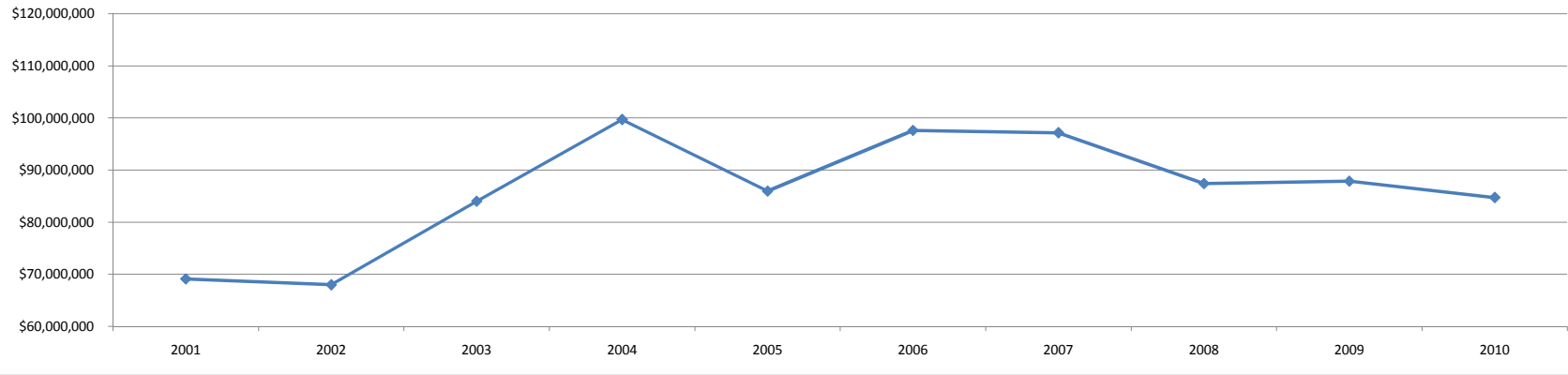


COUNTY DEBT BALANCE DECEMBER 31

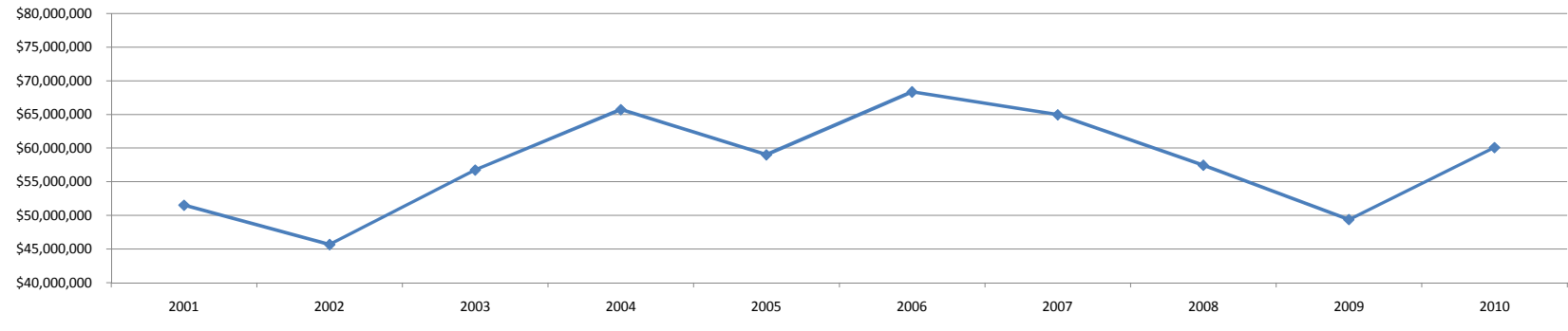
Debt Type	2001	2002	2003	2004	2005	2006	2007	2008	2009	2010
County Bond Anticipation Notes	\$ 5,700,000	\$ 12,596,000	\$ 13,742,000	\$ 13,742,000	\$ 9,599,000	\$ 2,000,000	\$ 2,000,000	\$ 3,504,000	\$ 15,177,000	\$ -
County General Improvement Bonds	\$ 51,530,000	\$ 45,685,000	\$ 56,769,000	\$ 65,728,000	\$ 59,018,000	\$ 68,359,000	\$ 64,974,000	\$ 57,469,000	\$ 49,394,000	\$ 60,093,000
Vo-Tech Bonds	\$ 3,470,000	\$ 3,100,000	\$ 2,905,000	\$ 2,710,000	\$ 2,410,000	\$ 2,960,000	\$ 3,110,000	\$ 2,730,000	\$ 2,330,000	\$ 3,180,000
County College Bonds	\$ 4,604,000	\$ 3,449,000	\$ 5,053,000	\$ 8,637,000	\$ 7,832,000	\$ 12,952,000	\$ 14,804,000	\$ 13,694,000	\$ 12,559,000	\$ 12,601,000
County College Ch. 12 Bonds	\$ 3,822,000	\$ 3,158,000	\$ 5,563,000	\$ 8,867,000	\$ 7,101,000	\$ 11,335,000	\$ 12,269,000	\$ 10,008,000	\$ 8,388,000	\$ 8,854,000
TOTAL	\$ 69,126,000	\$ 67,988,000	\$ 84,032,000	\$ 99,684,000	\$ 85,960,000	\$ 97,606,000	\$ 97,157,000	\$ 87,405,000	\$ 87,848,000	\$ 84,728,000



TOTAL COUNTY DEBT



County General Improvement Bonds



COUNTY DEBT DISTRIBUTION - DECEMBER 31, 2010

