



DEPARTMENT OF ENGINEERING AND PLANNING
 One Spring Street
 Newton, New Jersey 07860
 973-579-0430
dpw@sussex.nj.us
 Matthew Sinke, P.E.
 Division Director/Assistant County Engineer

Construction Notice – Hopatcong St. Wall Repairs Distributed: December 1, 2017

Project:

Hopatcong Street Wall Repairs

Intersection of CR-609 (Lakeside Avenue) and Hopatcong Street, Hopatcong Borough

Construction Forces:

- Sussex County Office of Bridge & Traffic Safety
- Sussex County Division of Public Works

Schedule:

Anticipated Schedule is as Follows:

- Construction Start – November 8, 2017
- Construction Duration – Approximately 4 Weeks

Hopatcong Street Ramp Closure:

The north leg (Jefferson side) of the Hopatcong Street Ramp from CR-609 (Lakeside Avenue) is now fully open to traffic.

Construction Activities:

- ✓ Closure of North Ramp - *Complete*
- ✓ Remove Existing Damaged Guide Rail - *Complete*
- ✓ Remove Damaged Portion of Masonry Retaining Wall – *Complete*
- ✓ Reconstruct Damaged Portion of Masonry Retaining- *Complete*
- ✓ Install New Guide Rail- *Complete*
- ✓ Reopen North Ramp to Traffic- *Complete*

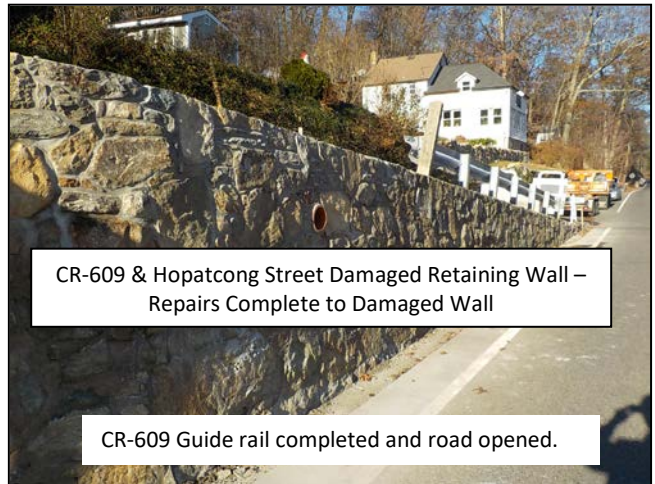
Contact Information:

For more information about this project please feel free to contact Matt Sinke, P.E., Assistant County Engineer, of the Sussex County Division of Engineering at 973-579-0430 or dpw@sussex.nj.us

N:\04 Asset\01 Road\609\A_A\Projects\Northwood Wall\Public Notices\201711201 PBL NTC 609 (Hopatcong Street Wall).doc



CR-609 & Hopatcong Street Damaged Retaining Wall – Prior to Repairs



CR-609 & Hopatcong Street Damaged Retaining Wall – Repairs Complete to Damaged Wall

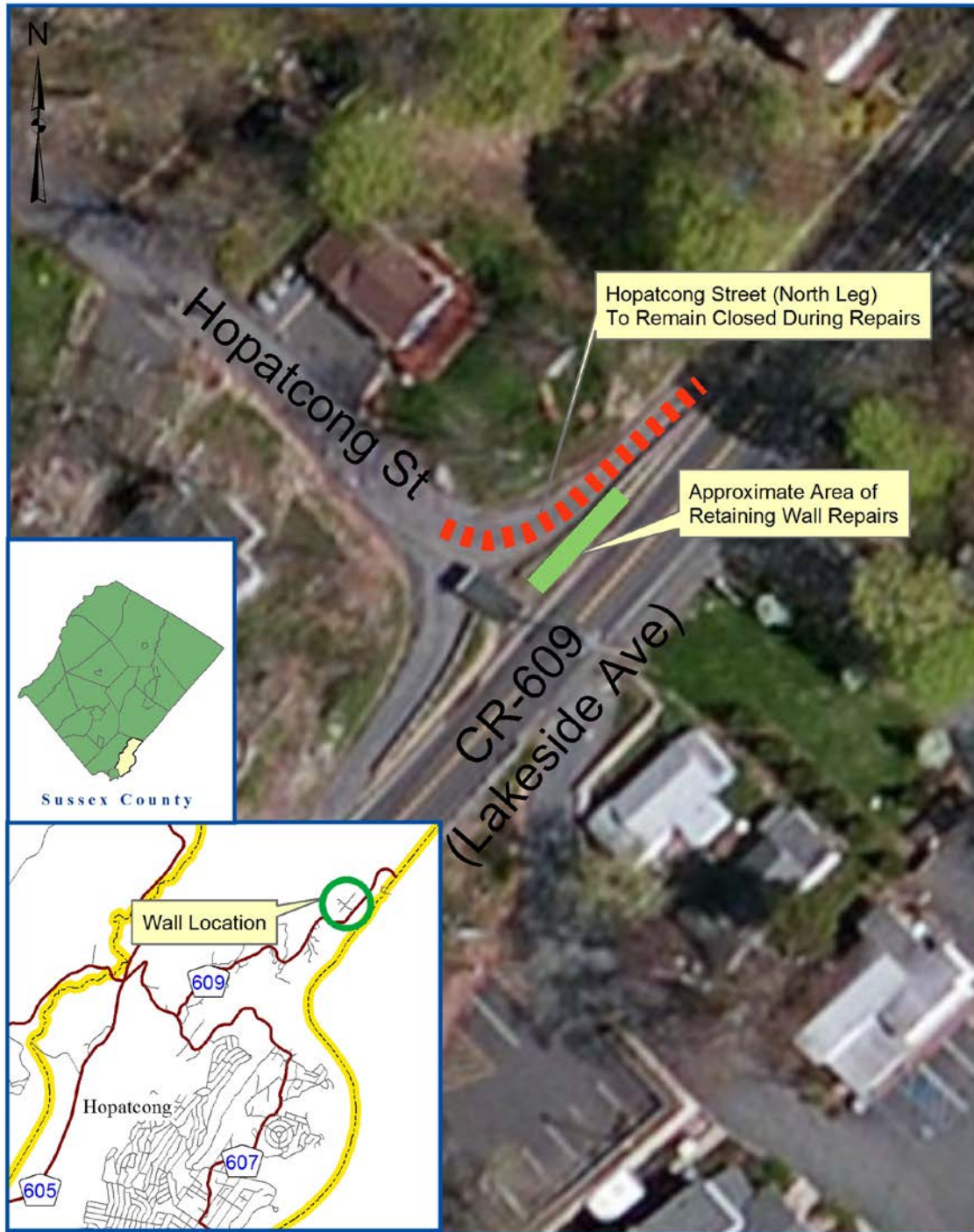
CR-609 Guide rail completed and road opened.





DEPARTMENT OF ENGINEERING AND PLANNING
 One Spring Street
 Newton, New Jersey 07860
 973-579-0430
dpw@sussex.nj.us
 Matthew Sinke, P.E.
 Division Director/Assistant County Engineer

Construction Notice – Hopatcong St. Wall Repairs Distributed: December 1, 2017



Sussex County Division of Engineering
 Hopatcong Street Retaining Wall Repairs
 Location Map - Not to Scale