



DEPARTMENT OF ENGINEERING AND PLANNING  
Division of Engineering  
One Spring Street  
Newton, New Jersey 07860  
973-579-0430  
[dpw@sussex.nj.us](mailto:dpw@sussex.nj.us)  
Matthew R. Sinke, P.E.  
Division Director/Assistant County Engineer

## Bridge X-43 Replacement

Distributed: April 13, 2021

### TRAFFIC ADVISORY FOR GEOTECHNICAL INVESTIGATION

#### Project:

The County is in the preliminary design phase for the replacement of Bridge X-43, carrying Unionville Road (CR 651) over Clove Brook in Wantage Township. Bridge X-43 is a 25-ft long, single span structure consisting of concrete encased multiple steel girders founded on concrete clad stone masonry abutments.

To properly evaluate the existing subsurface conditions for the design of a new replacement bridge, accurate information about the subsurface soil conditions at the bridge site must be obtained.

Therefore, a truck mounted drilling rig (see photo) will be mobilized at this location to conduct a geotechnical investigation.



Typical Soil Boring Operation Set Up

#### Traffic Impacts:

Unionville Road, between SR 23 and Rose Morrow Road will be under construction for the geotechnical engineering investigation. PVMS's will be installed in advance of the project, at both bridge approaches, to alert motorists of delays and advise to plan alternate route. Access to driveways and municipal roads will be maintained throughout the duration of the operation.



Elevation View of Bridge X-43

#### When:

The geotechnical investigation is expected to take up to two days with traffic impacts expected between 7:00 AM and 5:00 PM each day on the following dates:

- Wednesday 21 and Thursday April 22.
- Schedule subject to change pending weather conditions and unforeseen circumstances.

#### Contact Information:

For more information regarding this Traffic Advisory or the Bridge X-43 replacement project, please contact Susan Delmar at the Sussex County Division of Engineering by phone at 973-579-0430 extension 1339 or by email at [sdelmar@sussex.nj.us](mailto:sdelmar@sussex.nj.us).



Roadway View of Bridge X-43

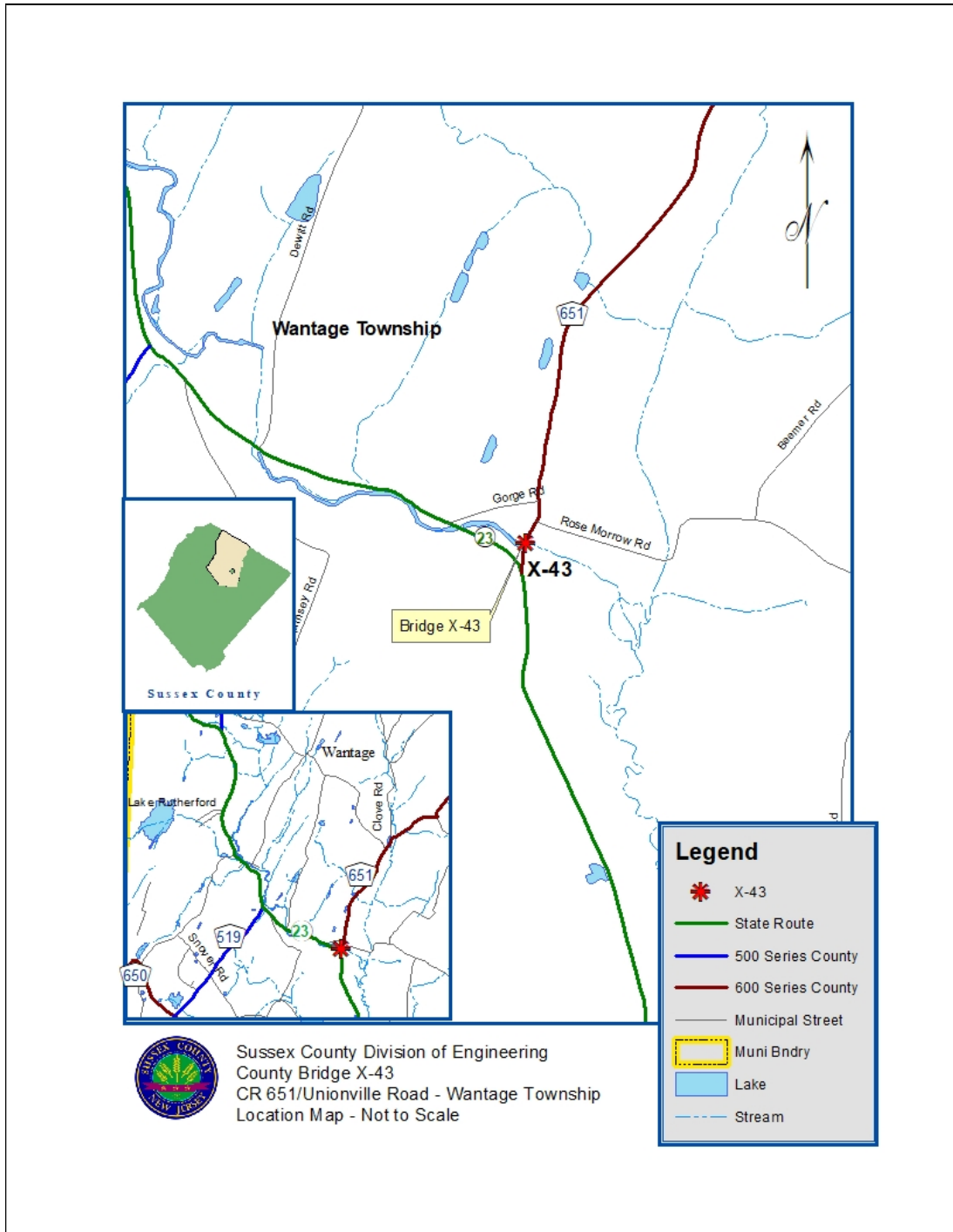


DEPARTMENT OF ENGINEERING AND PLANNING  
 Division of Engineering  
 One Spring Street  
 Newton, New Jersey 07860  
 973-579-0430  
[dpw@sussex.nj.us](mailto:dpw@sussex.nj.us)  
 Matthew R. Sinke, P.E.  
 Division Director/Assistant County Engineer

Bridge X-43 Replacement

Distributed: April 13, 2021

Location Map



Sussex County Division of Engineering  
 County Bridge X-43  
 CR 651/Unionville Road - Wantage Township  
 Location Map - Not to Scale