



DEPARTMENT OF ENGINEERING AND PLANNING  
 Division of Engineering  
 One Spring Street  
 Newton, New Jersey 07860  
 973-579-0430  
[dpw@sussex.nj.us](mailto:dpw@sussex.nj.us)  
 Matthew R. Sinke, P.E.  
 Division Director/Assistant County Engineer

**Rehabilitation of Bridge C-18 Completion Notice Distributed: May 28, 2021**

**Project:**

**Rehabilitation of Bridge C-18**

Carrying Roseville Road over Wolf Lake Inlet, Byram Township

**Designer:** Genesis Engineering, LLC, Lafayette, NJ

**Contractor:** Awarded to Sparwick Contracting, Inc., Lafayette, NJ, for \$495,255.00

**Preliminary Construction Schedule:**

Contract Award: August 14, 2019  
 Start Construction: July 7, 2020  
 Construction Period: 120 Sequential Calendar Days  
 Substantial Completion By: November 30, 2020  
 Final Completion Achieved: May 27, 2021

**Construction Funding:**

FY 2017 NJDOT LBFN Disc Grant:	\$470,000.00
Various County Capital Accounts:	\$ 25,255.00
<b>TOTAL</b>	<b>\$495,255.00</b>

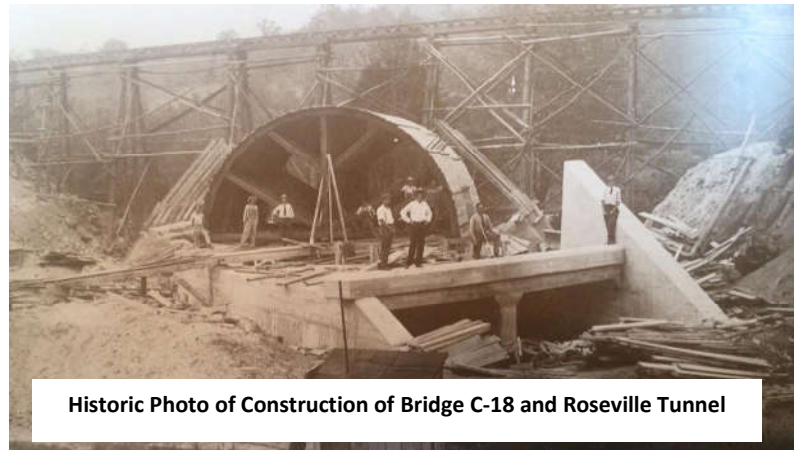
**Construction Activities:**

- ✓ Install Soil Erosion & Sediment Control Measures – *Completed*
- ✓ Install Cofferdam & Dewater – *Completed*
- ✓ Clean & Restore Culvert Interior – *Completed*
- ✓ Demolish Existing Culvert Headwalls – *Completed*
- ✓ Construct Reinforced Concrete Culvert Headwalls - *Completed*
- ✓ Apply Stain Sealer to Exposed Concrete – *Completed*
- ✓ Install Chain Link Fencing / Gates – *Completed*
- ✓ Landscape & Incidental Work Items – *Completed*

**Traffic Impacts:**

Roseville Road and the Roseville Road tunnel will remain open to traffic and accessible.

A single lane traffic daytime flagging operation will be implemented throughout the duration of construction as necessary.



Historic Photo of Construction of Bridge C-18 and Roseville Tunnel



Final Cleanup, Landscape & Incidental Work



Chain Link Fencing/Gates Completed

For more information about this project please feel free to contact Susan Delmar, P.E., at the Sussex County Division of Engineering at 973-579-0430 or [dpw@sussex.nj.us](mailto:dpw@sussex.nj.us)



DEPARTMENT OF ENGINEERING AND PLANNING  
Division of Engineering  
One Spring Street  
Newton, New Jersey 07860  
973-579-0430  
[dpw@sussex.nj.us](mailto:dpw@sussex.nj.us)  
Matthew R. Sinke, P.E.  
Division Director/Assistant County Engineer

**Rehabilitation of Bridge C-18 Completion Notice**      **Distributed: May 28, 2021**

*Location Map*

