

# Rail-Trail Development in Sussex County

January 26th, 2023  
Sussex County Open-Space Committee





Who We Are

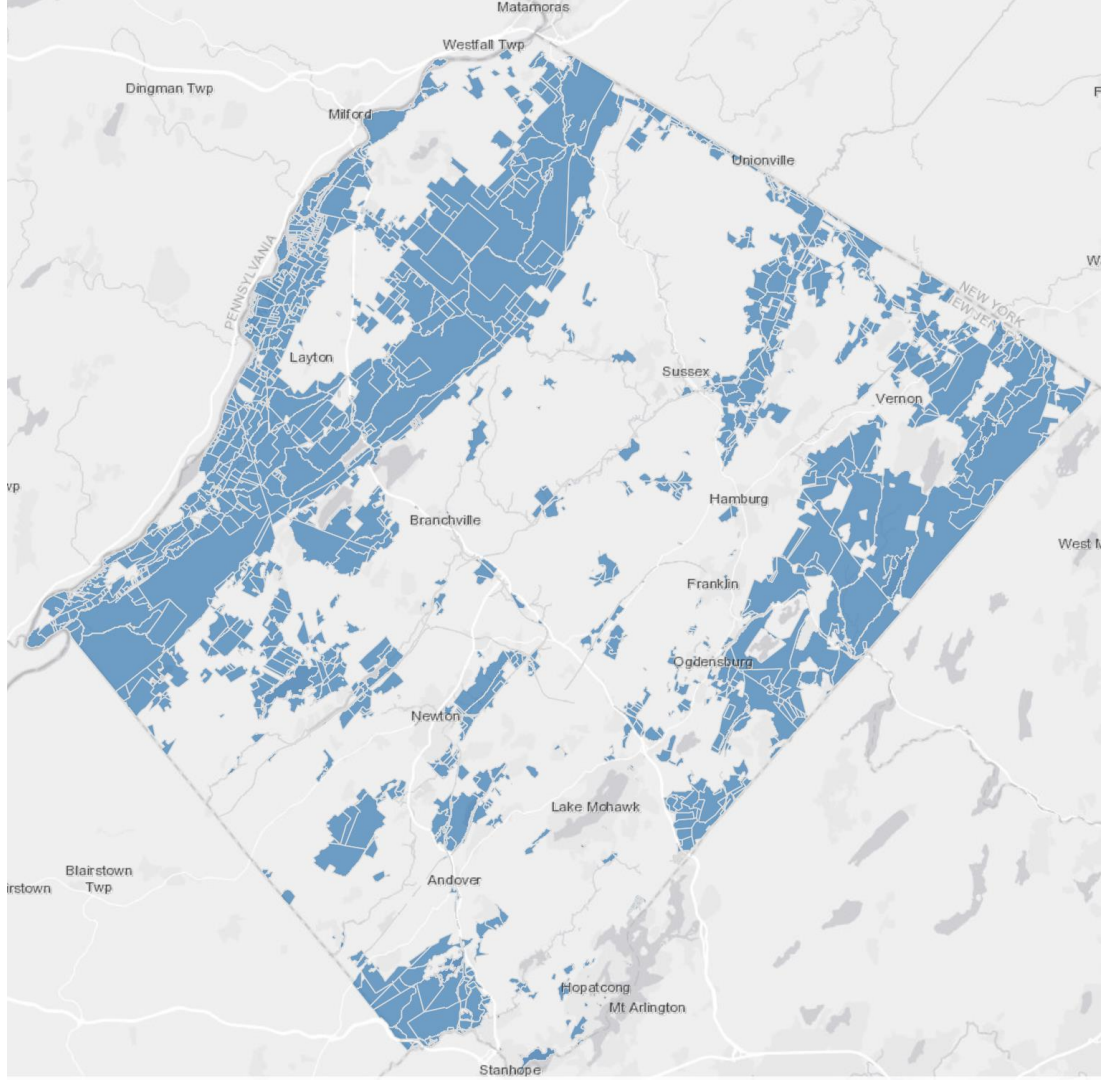


**Historical Railroads  
in Sussex County, NJ**

	CNJ
	DLW
	NYSW (historical)
	NYSW (modern)
	LHR
	LNE

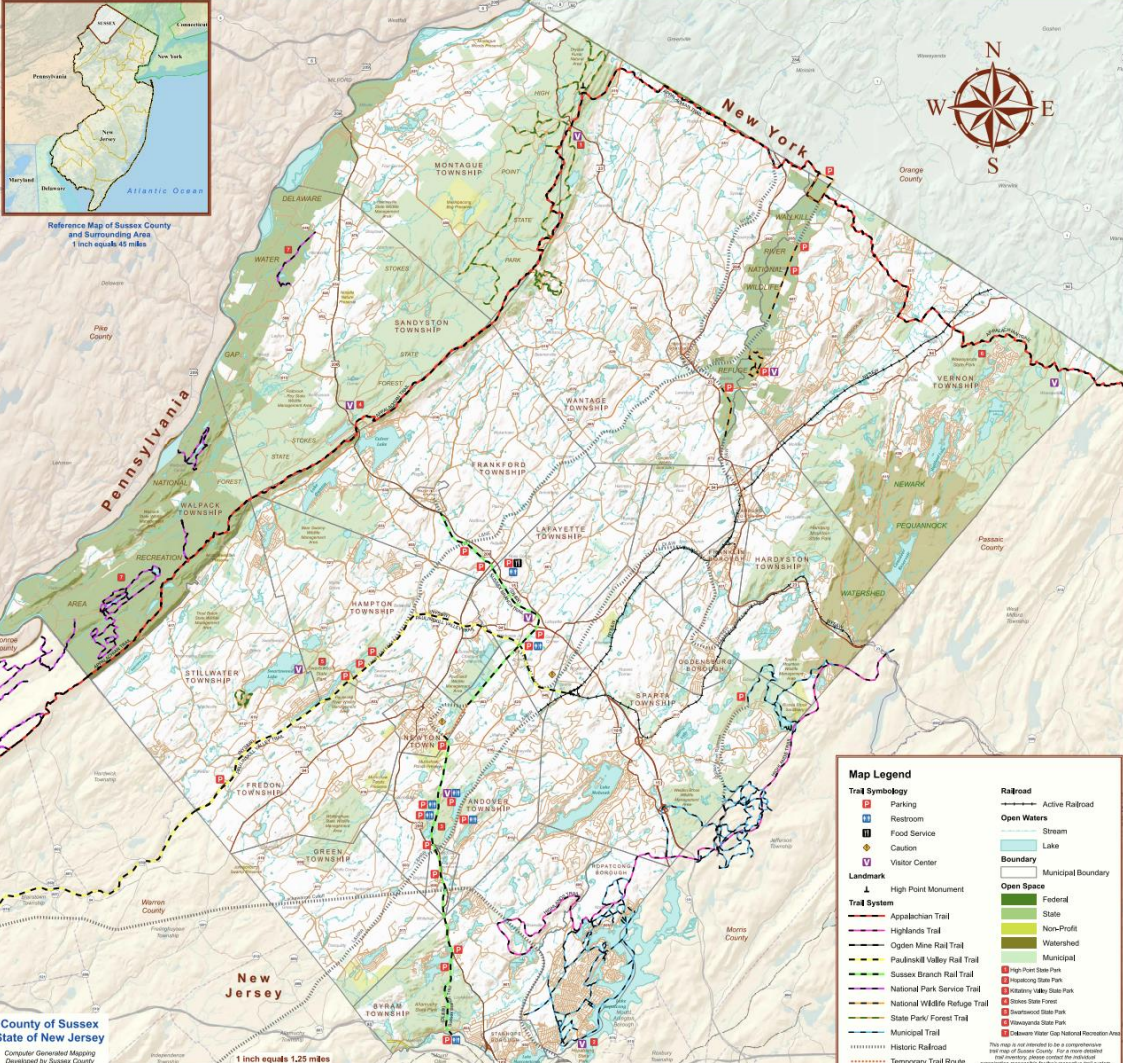
6 mi.  
10 km.







Reference Map of Sussex County and Surrounding Area  
1 inch equals 43 miles



County of Sussex  
State of New Jersey

Computer Generated Mapping  
Developed by Sussex County  
Office of GIS

1 inch equals 1.25 miles

**Map Legend**

- |                                |   |
|--------------------------------|---|
| Parking                        | Active Railroad                             |
| Restroom                       | <b>Open Waters</b>                          |
| Food Service                   | Stream                                      |
| Caution                        | Lake  |
| Visitor Center                 | <b>Boundary</b>                             |
| High Point Monument            | Municipal Boundary                          |
| <b>Trail System</b>            | <b>Open Space</b>                           |
| Appalachian Trail              | Federal                                     |
| Highlands Trail                | State                                       |
| Ogden Move Rail Trail          | Non-Profit                                  |
| PaulsMill Valley Rail Trail    | Watershed                                   |
| Sussex Branch Rail Trail       | Municipal                                   |
| National Park Service Trail    | High Point State Park                       |
| National Wildlife Refuge Trail | Hopalong State Park                         |
| State Park/ Forest Trail       | Honesdale State Park                        |
| Municipal Trail                | Stokes State Forest                         |
| Historic Railroad              | Stonywood State Park                        |
| Temporary Trail Routes         | Haverwood State Park                        |
|                                | Delaware Water Gap National Recreation Area |

This map is not intended to be a comprehensive trail map of Sussex County. For a more detailed trail map, please contact the respective organization responsible for their respective trail system.

- **The Park at Sparta Junction** – Eastern terminus of the Paulinskill Valley Trail (PVT), Trail head & connector trail to the proposed “Iron Horse Heritage Trail.”  
 Starts: Existing PVT • Ends: At Iron Horse • Total Mileage: 0,75
- Proposed **“Iron Horse Heritage Trail”** (Former Sussex Railroad – Franklin Branch then the Delaware-Lackawanna & Western Branch (DL&W) - Franklin Branch, Starts: Sparta Junction • Ends: Franklin • Total Mileage: 9,0
- **Sussex Branch Trail:**
  - Extension and trail head at Branchville  
 Starts: Branchville • Ends: Branchville • Total Mileage: 0,25
  - “Completion” in Newton  
 Starts: Yates Road • Total Mileage: 1,0
  - Connection to the former Lehigh & New England Railroad  
 PART A: Augusta Hill Road South to the PVT  
 Starts: Augusta • Ends: Newton • Total Mileage: 5,8  
 PART B: Augusta Hill Road North to the Appalachian Trail (AT)  
 Starts: Augusta • Ends: Vernon • Total Mileage: 16,0
- Proposed **“Walkkill Valley Heritage Trail”** – Ogdensburg Section, Franklin South Section, Franklin North Section & Hamburg Section
- **Lehigh & Hudson River Railway (L&H)** – from Limecrest to Rt. 206, Andover  
 Starts: Limecrest • Ends: Rt. 206, Andover
- **Morris Canal Greenway** connection to Sussex Branch Trail
- **Canal Society** – Lake Musconetcong to Lake Hopatcong Greenway
- **Canal Society** – L&H to Sussex Branch Trail to the Andover Mine & Kittatinny Valley State Park.
- **Iron Horse Heritage Trail** to Pimple Hills State Park to NYS&W Rail with Trail to Station Park to Sparta Area to Ogden Mine Railroad to Mahlon Dickerson to Highlands Trail

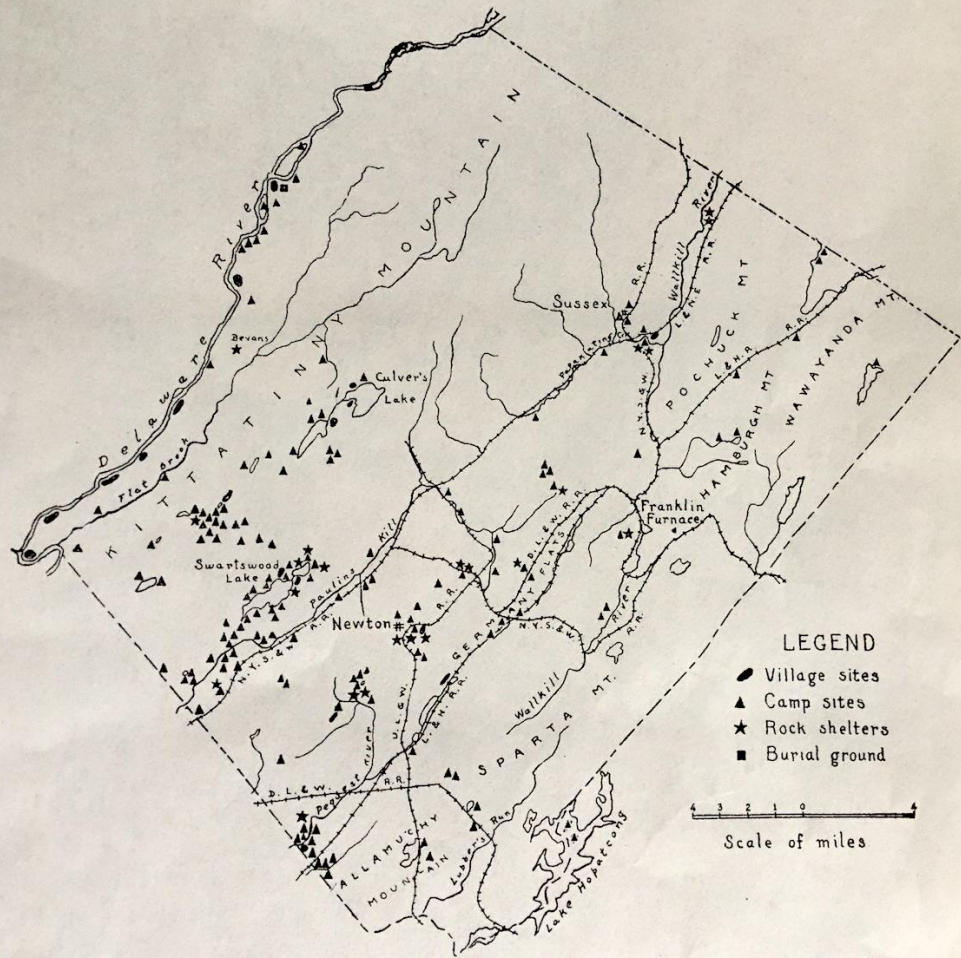


PLATE I.—Distribution of Indian Remains in Sussex County.



# DL

## W



Abandoned in 1945

9.10 Miles of Railroad  
Iron Horse Heritage Trail

## EL



Abandoned in 1966

17.50 Miles of Railroad  
Sussex Branch Trail

## LNE



Abandoned in 1962

16.30 Miles of Railroad  
Great Valley Trail  
Wallkill River NWR

## NYSW



New Line Built during 1976

35.50 Miles of Railroad  
Paulinskill Valley Trail  
Great Valley Trail  
Wallkill Valley Heritage Trail





# Rail Trail Status in Sussex County



Paulinskill  
Valley Trail

Sussex  
Branch Trail

Great Valley  
Trail

Iron Horse  
Heritage Trail

Wallkill Valley  
Heritage Trail

...

...

...

...

...

NJ State Trail  
since 1986

NJ State Trail  
since 2012

Part A: Sussex  
Branch Loop  
Extension (5.8 miles)

Management  
Plan prepared in  
2002, trail  
development is  
paused

Management  
Plan prepared in  
2002, trail  
development is  
paused

Maintained by  
Kittatinny Valley  
State Park

Maintained by  
Kittatinny Valley  
State Park


Part B: Wallkill River  
NWR planned  
extension (16.0 miles)

# Value of Rail-Trails in Sussex County


- Improved physical fitness & overall health
- Preservation of natural & cultural resources
- Quality of life improvement
- Access to nature & open-space
- Environmental benefits
- Supporting local economy




# Iron Horse Heritage Trail

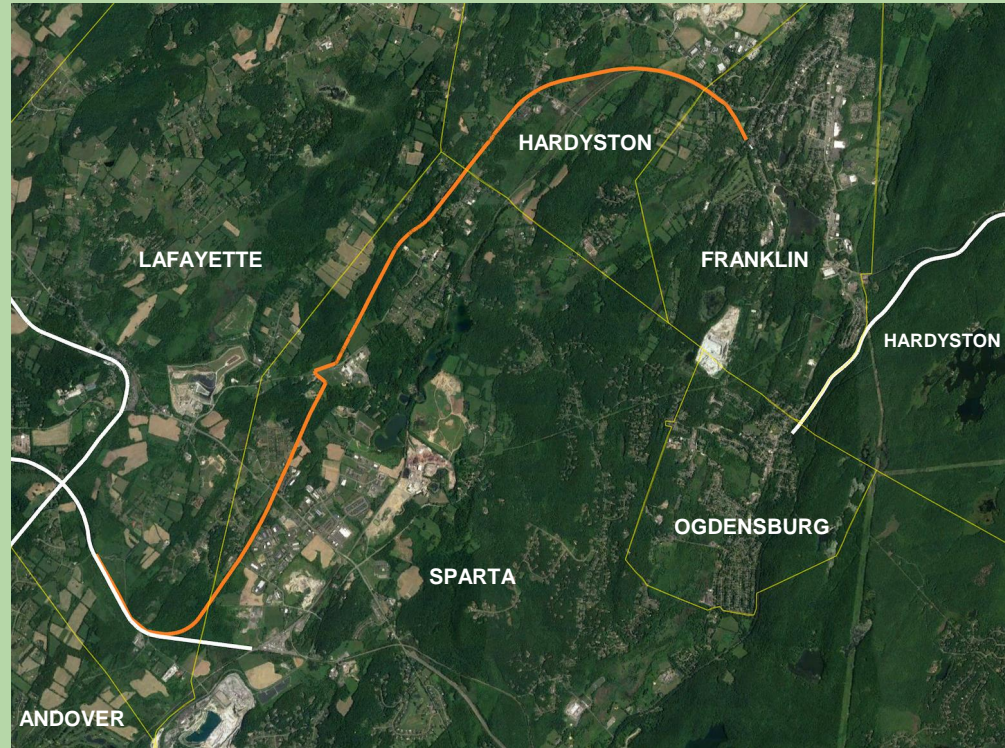
 **Lafayette;** 2.25 miles with 1.5 miles mirroring  
PVT from Warbasse Junction until Sunset Road

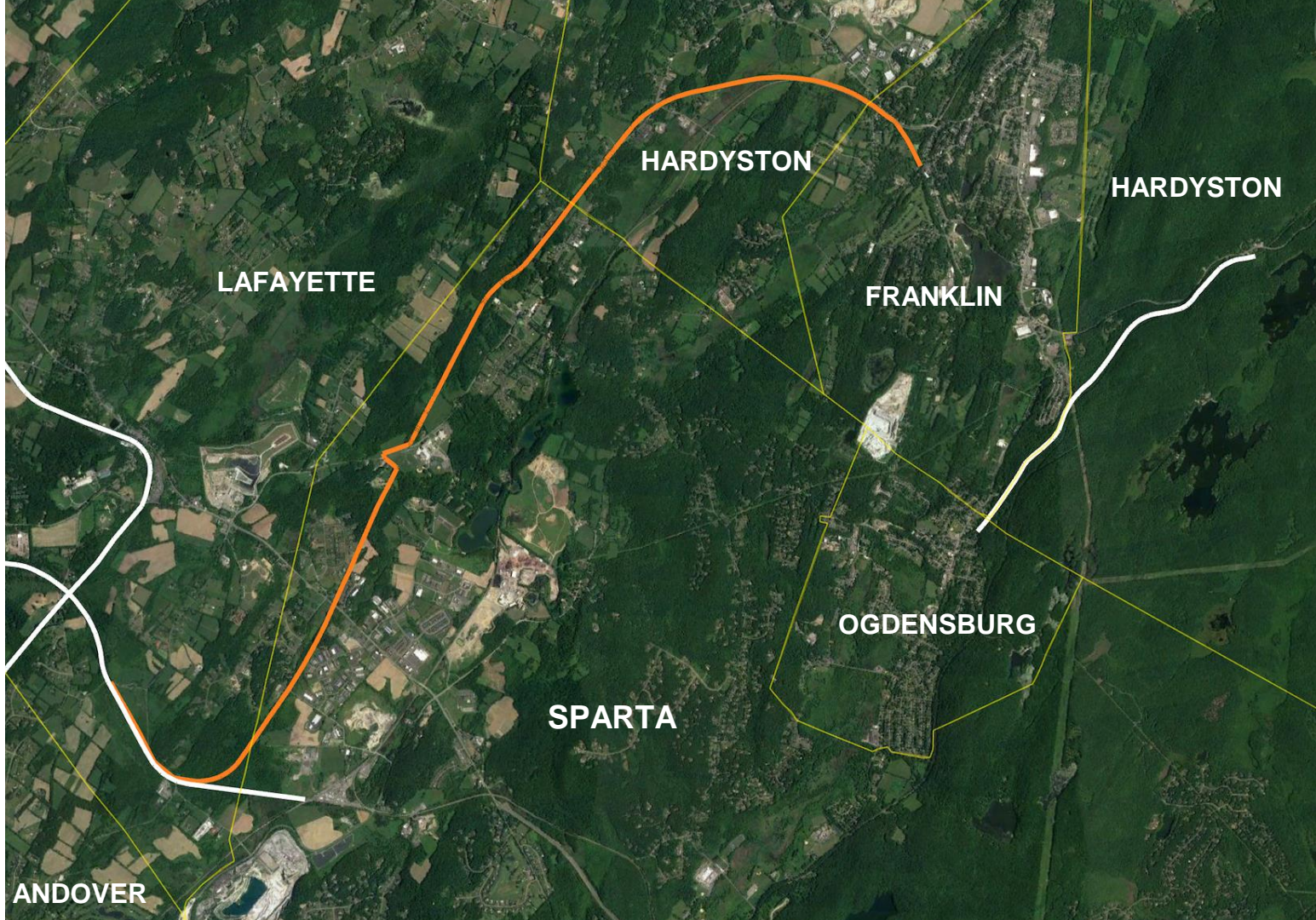
 **Sparta;** 4 miles with SCUMA ownership of 2 miles

 **Hardyston;** 2.5 miles with SCMUA ownership of 1  
mile

 **Franklin;** 0.5 miles to Franklin Viaduct

**Total: 9.25 Miles of Rail-Trail**





LAFAYETTE

HARDYSTON

HARDYSTON

FRANKLIN

OGDENSBURG

SPARTA

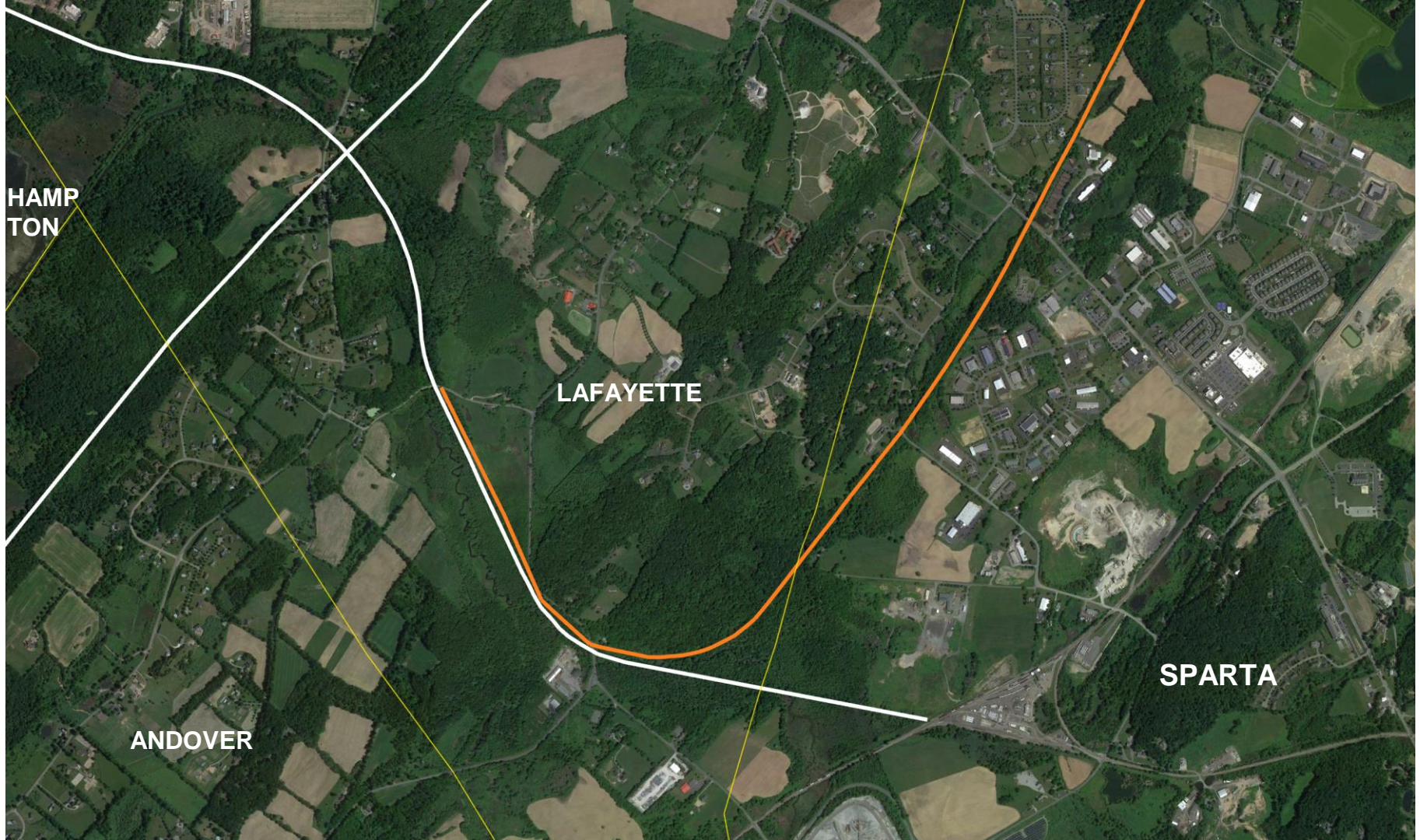
ANDOVER

HAMP  
TON

LAFAYETTE

SPARTA

ANDOVER





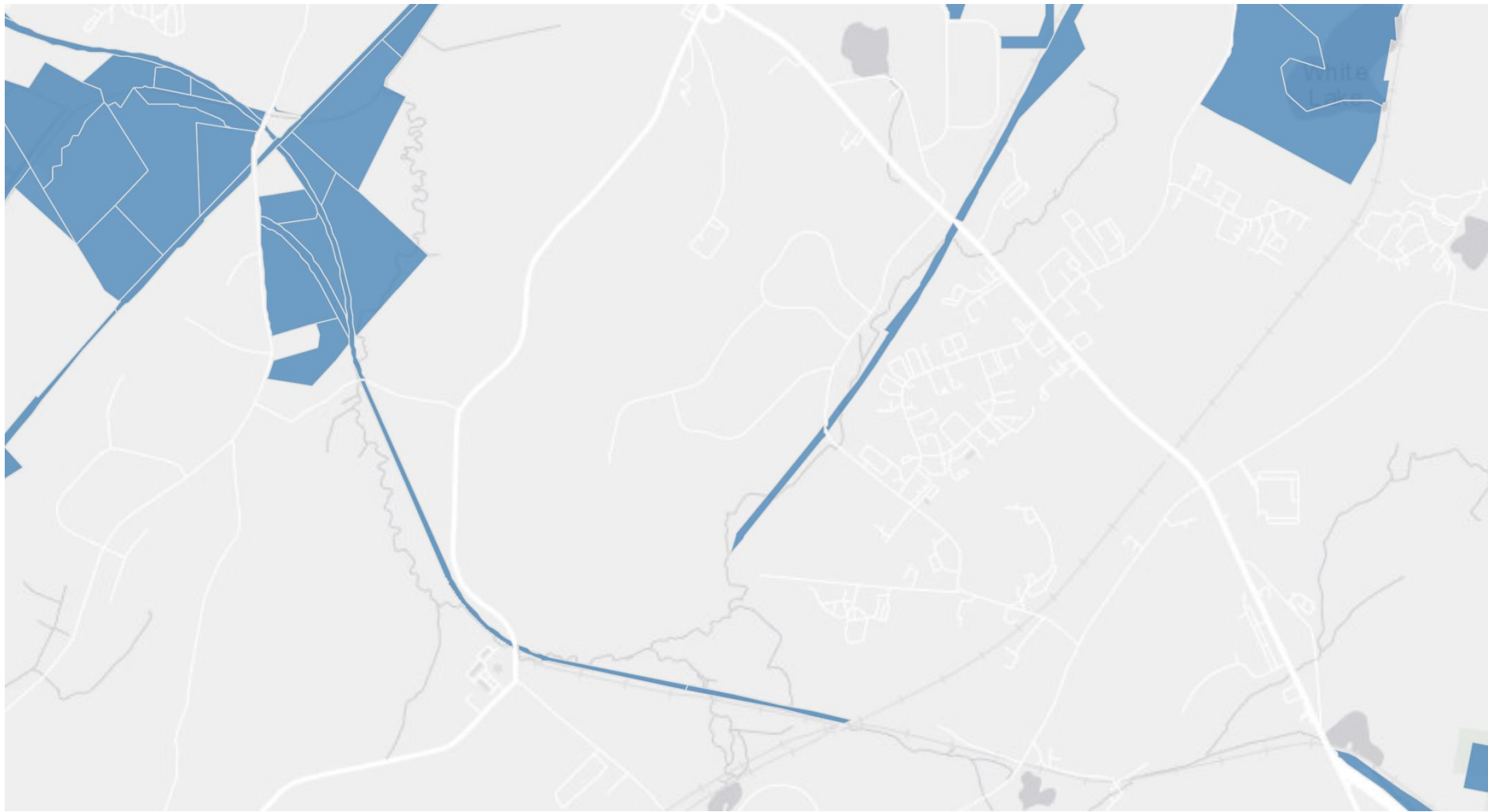
Warbasse Jct Rd

Sunset Inn Rd

Randazzo Rd

Limecrest Rd

15



- Paulinskill Valley Trail terminus
- Warbasse Junction + Sussex Branch
- Lack of Accessibility
- Lack of Crosswalks
- Unbuilt Sparta Junction Park
- Lafayette Village
- 8 Open-Space Zonings
- Easements expired east from Warbasse Junction to Sparta Junction
- Native American Sites
- 2 Parking Locations
- Clove Brook & Papapakating Creek Project Area





HARDY  
STON

LAFAYETTE

SPARTA





Meadows Rd

Meadows Rd

94

94

15

94

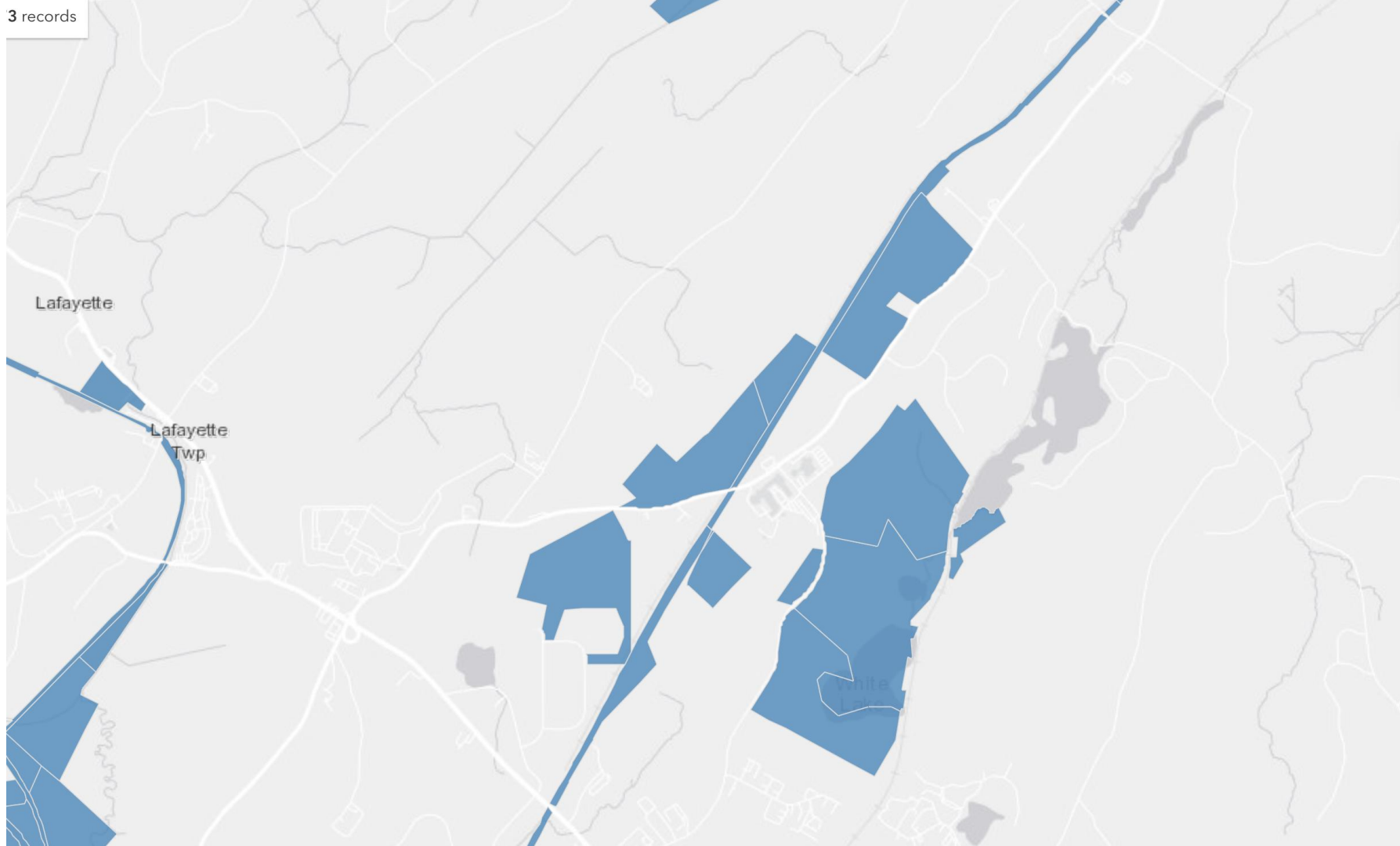
94

15

Pet Inn Rd

W Mountain

3 records





# Sparta Township Summary



- North Jersey Veterans Memorial Cemetery
- White Lake Fields
- Camp Sacajawea
- Sussex County Technical School
- Homestead Rest
- Monroe Historic Village
- Optimum Time Equestrian
- Sussex County Charter School for Technology
- North Village Economic Development Area
- 7 Open-Space Zonings
- Trail Ownership split between SCUMA & SC for 2 miles
- 4 Parking Locations
- Monroe Big Springs (B2) *NHPS*
- Native American Sites
- Walkkill River Watershed
- Clove Brook & Papapakating Creek Project Area
- Friar Mountain Model Railroad Museum



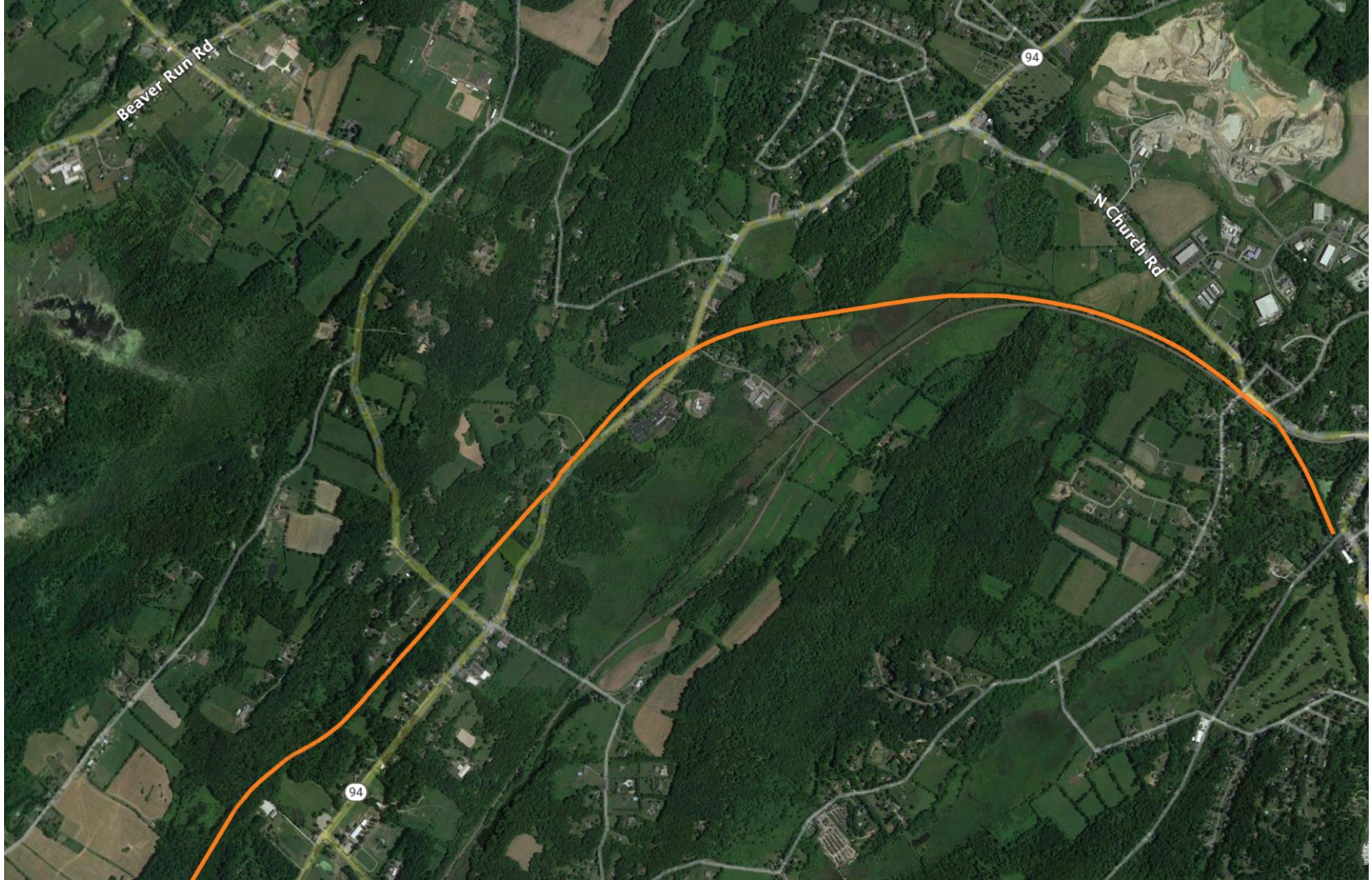
An aerial photograph of a rural region, likely in the Southeastern United States, showing a mix of green fields, dense forests, and some industrial or commercial buildings. A thick orange line highlights a curved path or road that starts in the lower-left, curves north and east, and then curves south and east. Yellow lines delineate the boundaries of four counties: Lafayette to the west, Sparta to the south, Hardyston in the center, and Franklin to the east. The terrain appears to be hilly with a central valley.

LAFAYETTE

HARDYSTON

FRANKLIN

SPARTA







# Hardyston Township Summary

- Old Monroe School House *NRHP*
- Kate Coyle Park
- Christian Faith Fellowship Church
- Woodstock Vibes Thrift Store
- Firehouse Bagels Co. 2
- Indian Creek Kennels
- Monroe Historic Village



- 1 Open-Space Zonings
- Trail Ownership split between SCUMA & SC for 1 mile
- 2 Parking Locations
- Monroe Big Springs (B2) *NHPS*
- Walkkill River Watershed
- Native American Sites







# Walkill Valley Heritage Trail



**Franklin; 3.5 Miles** centered from the Franklin Viaduct

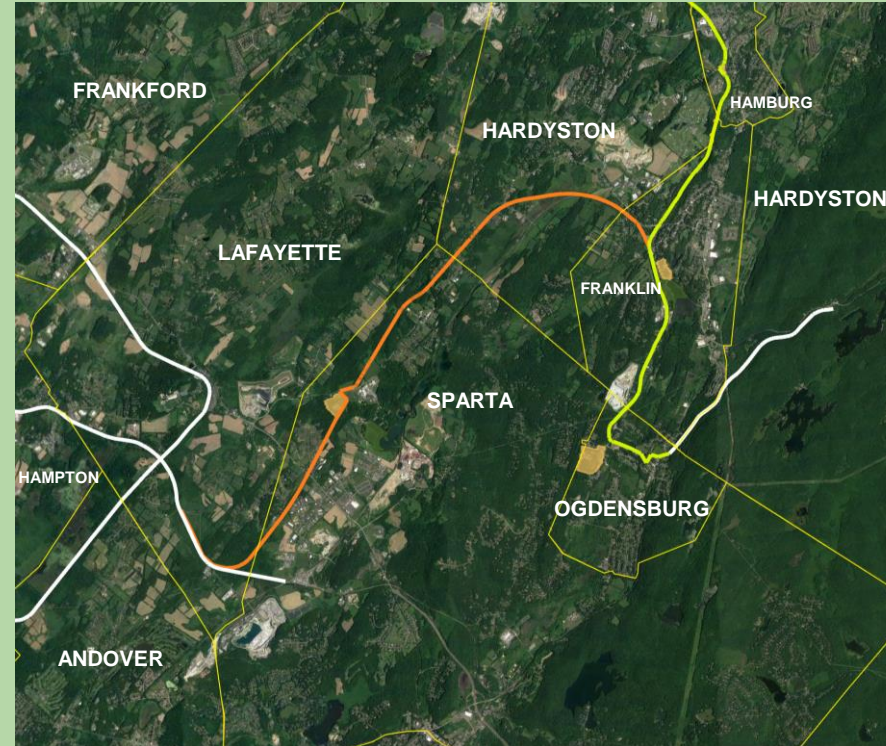


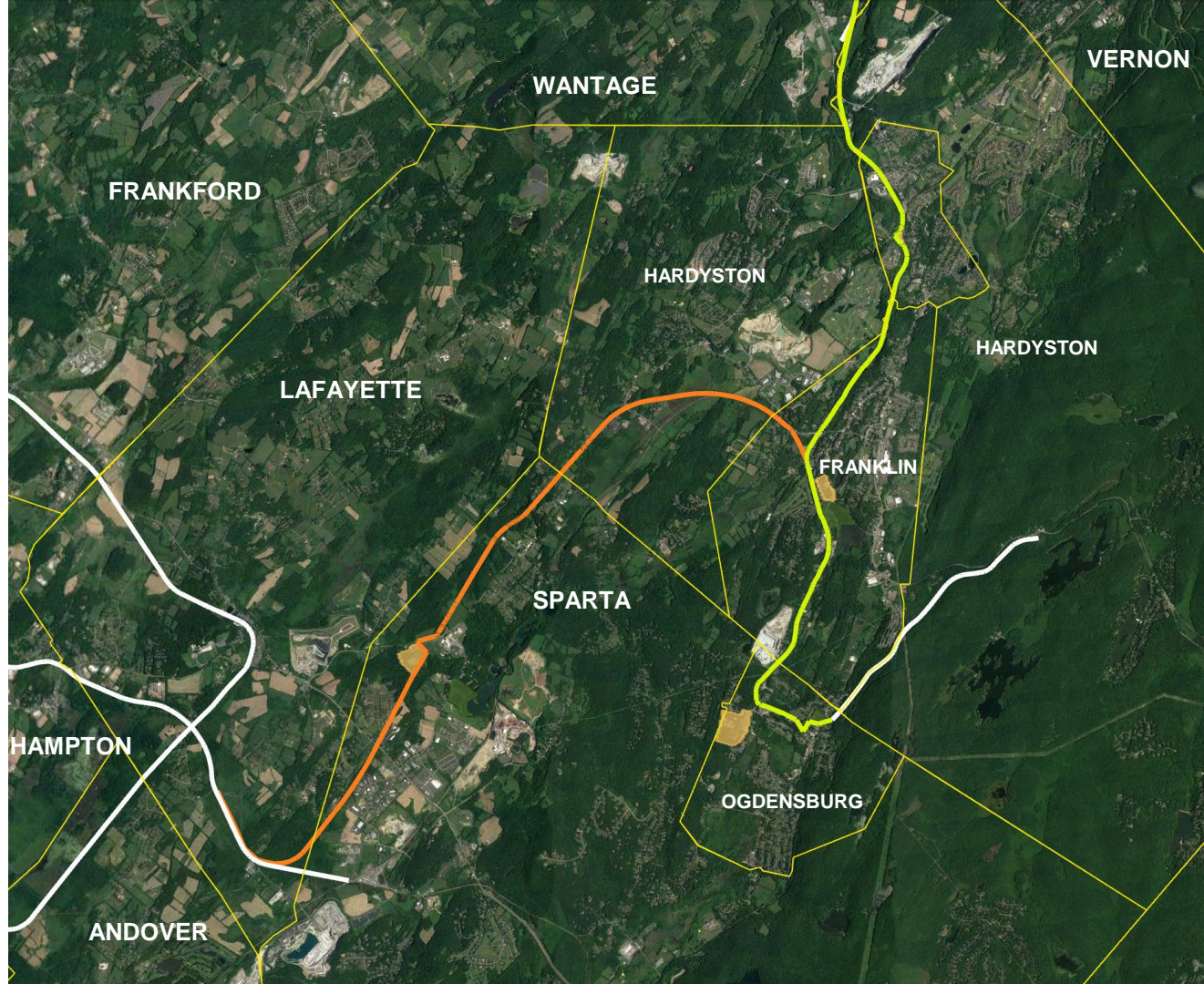
**Ogdensburg; 0.57 miles** with a 1.03 mile potential expansion connecting to Hamburg WMA Rail-Trail



**Hamburg; 1.38 miles + 3 miles** connecting to Wood Duck Nature Trail

**Total: 9.48 Miles of Rail-Trail**





WANTAGE

VERNON

FRANKFORD

HARDYSTON

HARDYSTON

LAFAYETTE

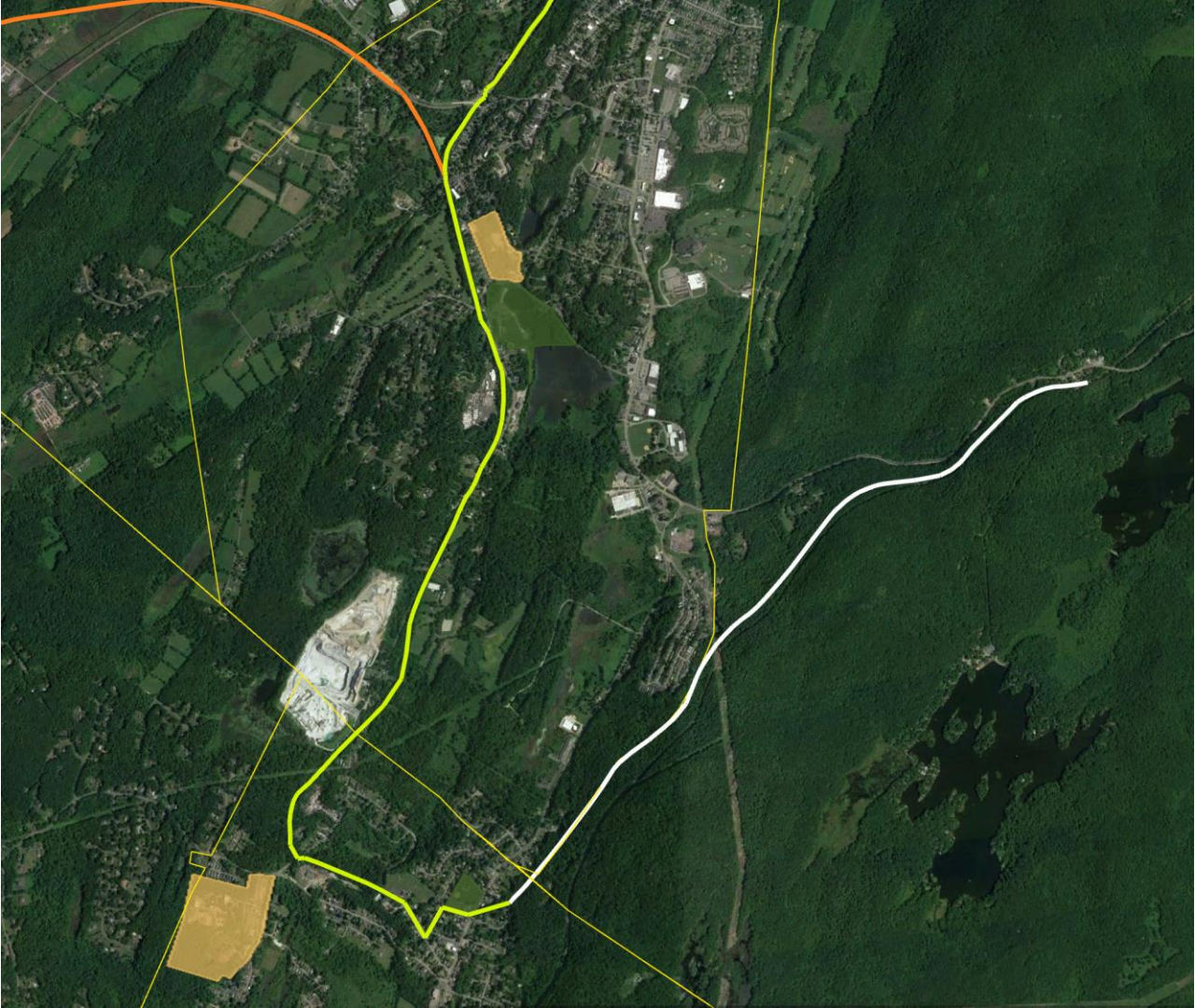
FRANKLIN

SPARTA

HAMPTON

OGDENSBURG

ANDOVER





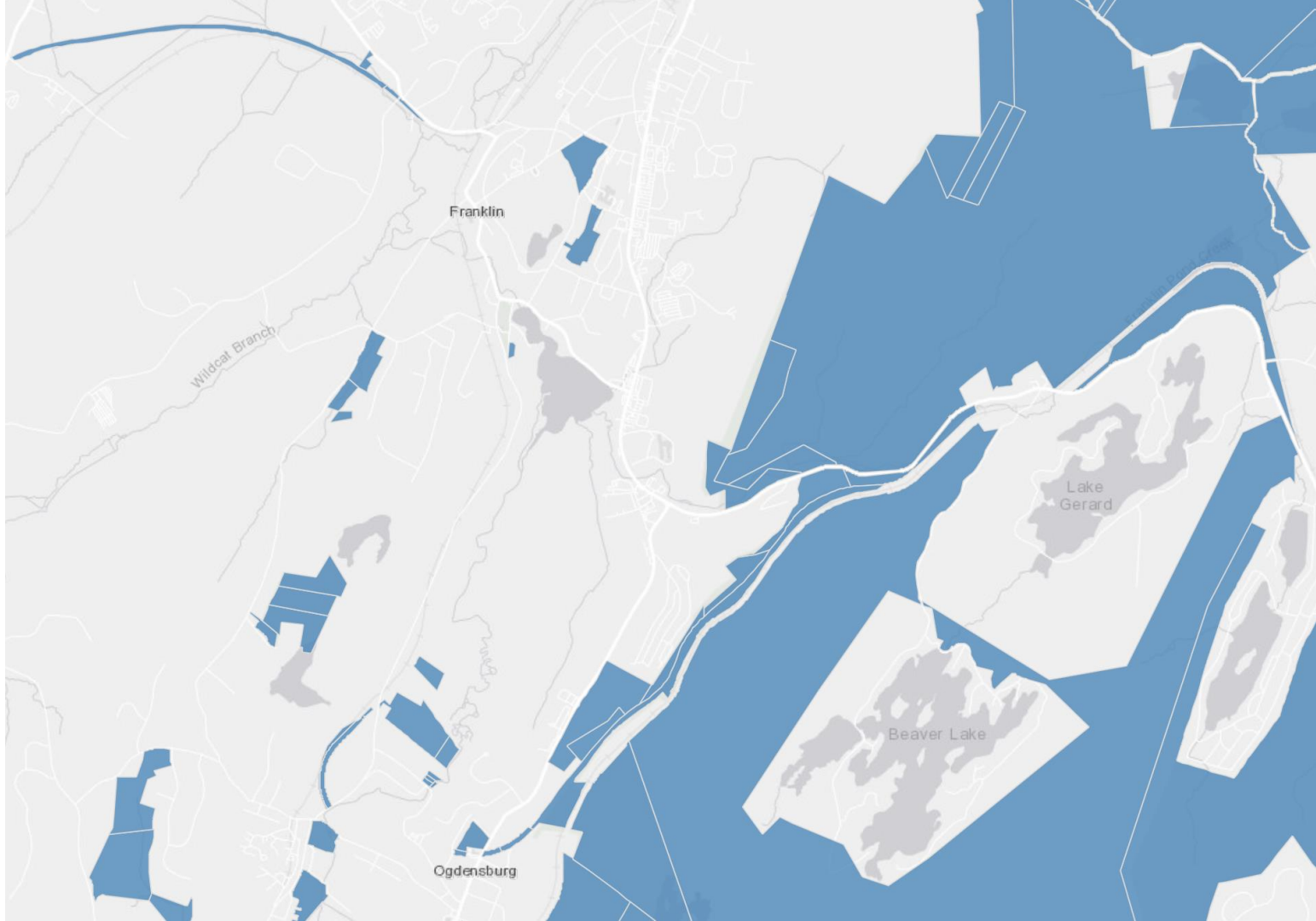
Sterling Hill Rd

Passaic Ave

Munsonhurst Rd

23

23





# Ogdensburg Borough Summary

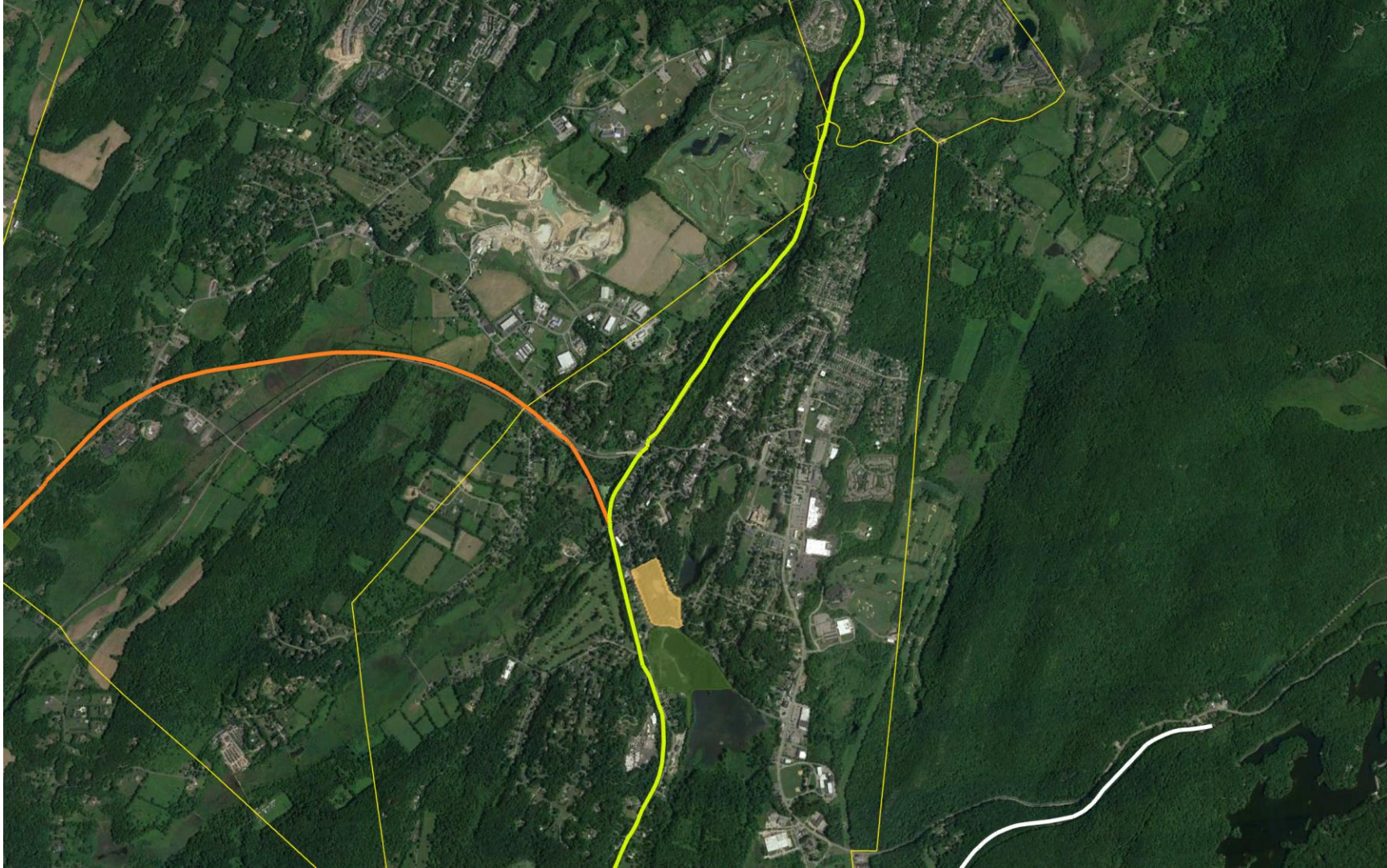


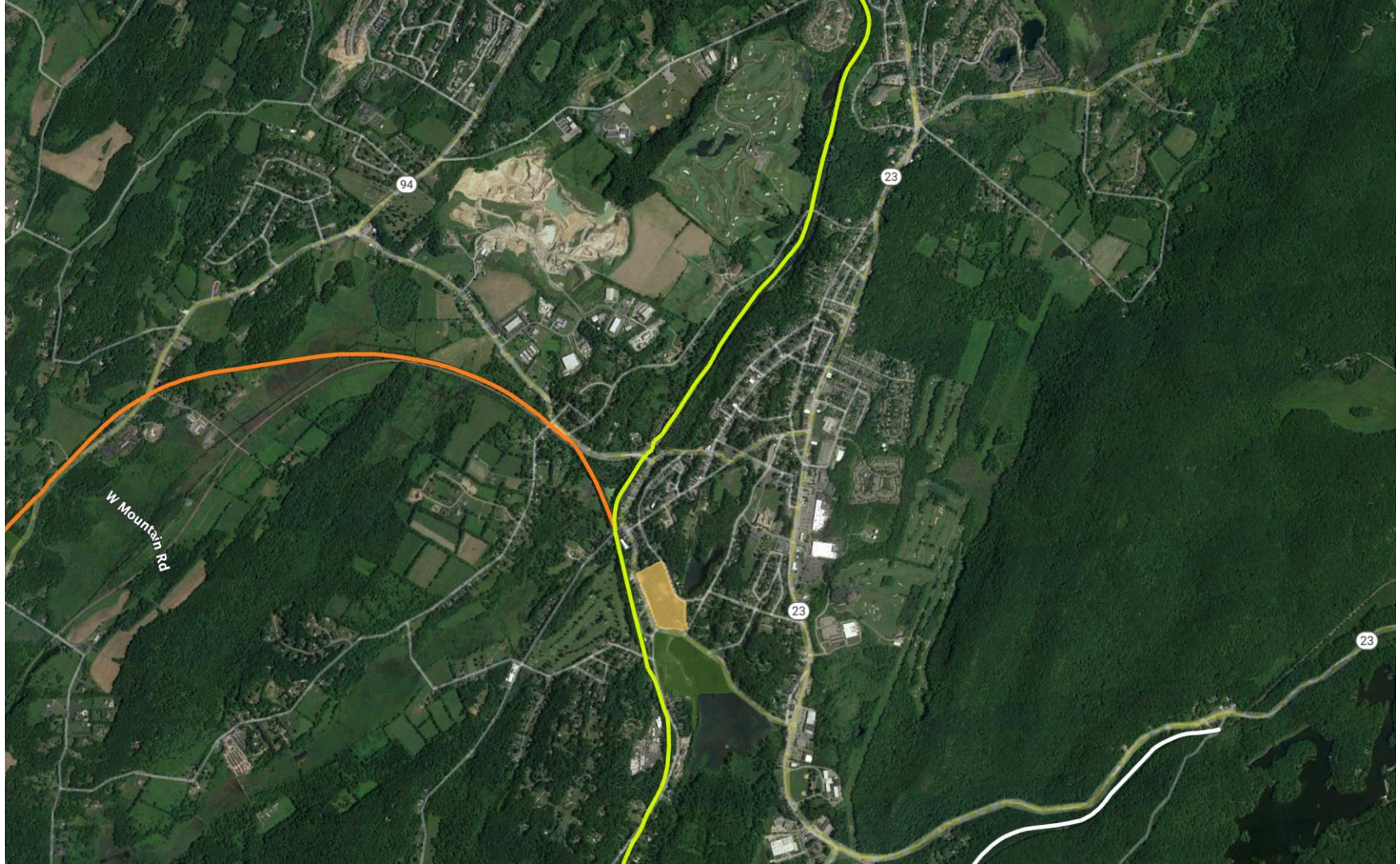
- Sterling Hill Mining Museum *NRHP*
- Backwards Tunnels *NRHP*
- St. Thomas of Aquin Church
- Ogdensburg Municipal Park
- Hamburg-Mountain WMA Rail-Trailhead
- Harry's Convenience Store
- Stew N' Dolly's Place
- Old Schoolhouse and Firehouse Museum *SCHM*



- 7 Open-Space Zonings
- Easements required between Cork Hill Rd & Kennedy Ave and a diversion through N Clark St
- 2 Parking Locations
- Wallkill River Watershed
- Native American Sites
- Edison Mine







W Mountain Rd

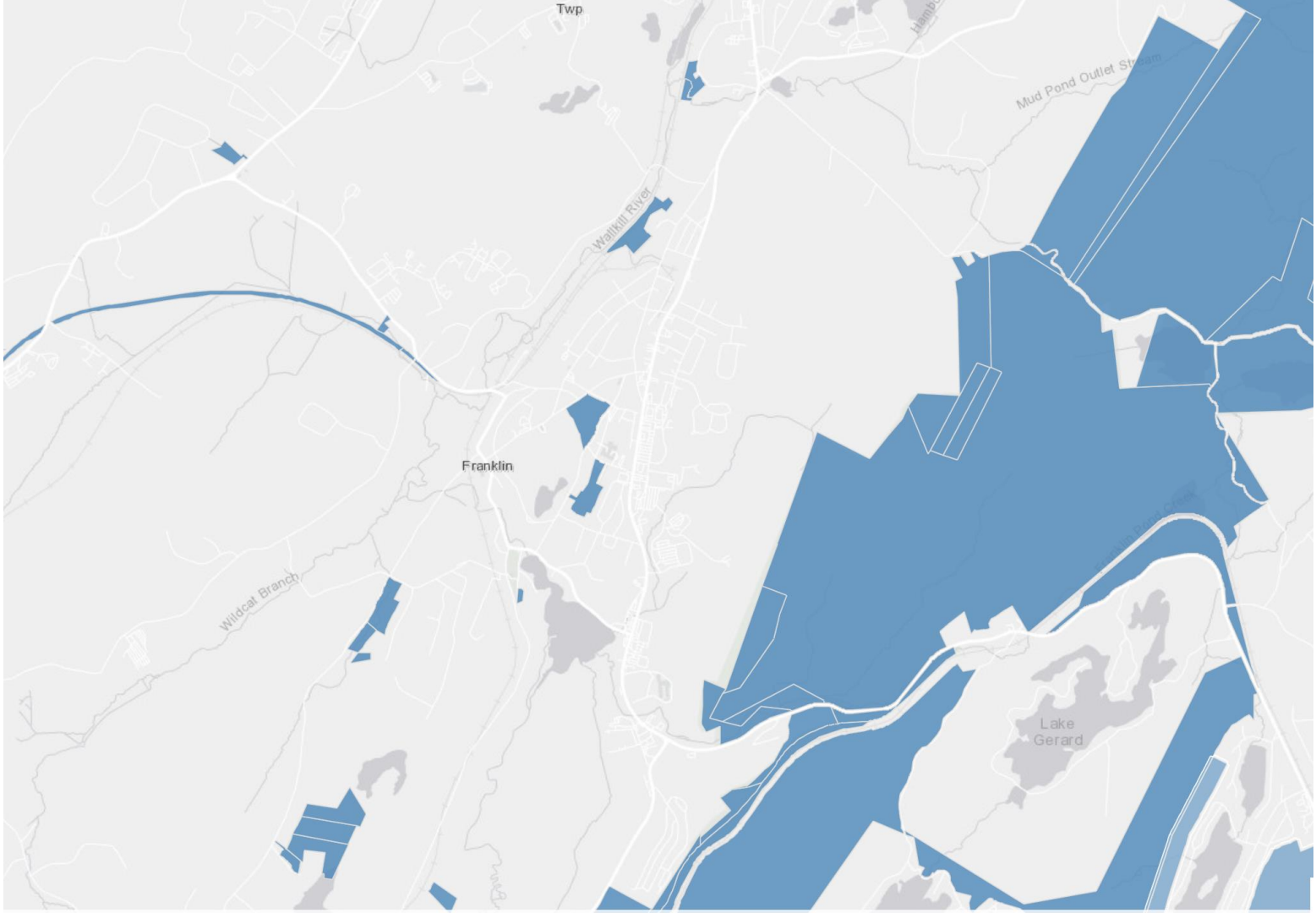
94

23

23

23

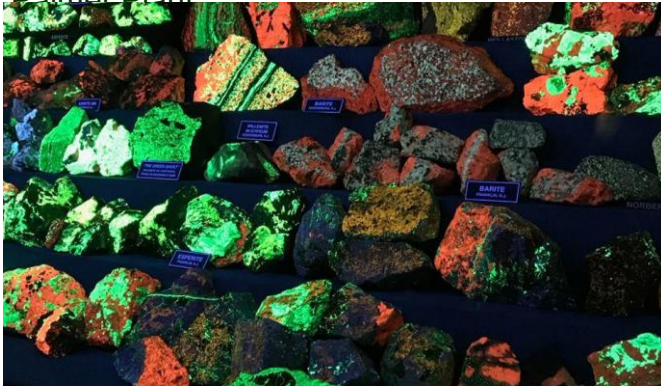






# Franklin Borough Summary

- Dr. Samuel Fowler Homestead *SCHM*
- Immaculate Conception Roman Catholic Church
- Franklin Borough Park
- Franklin Mineral Museum *SCHM*
- Franklin Furnace *SCHM*
- Muckraker Beermaker
- Riverview Barn
- Braen Stone of Franklin
- Palmer Plant

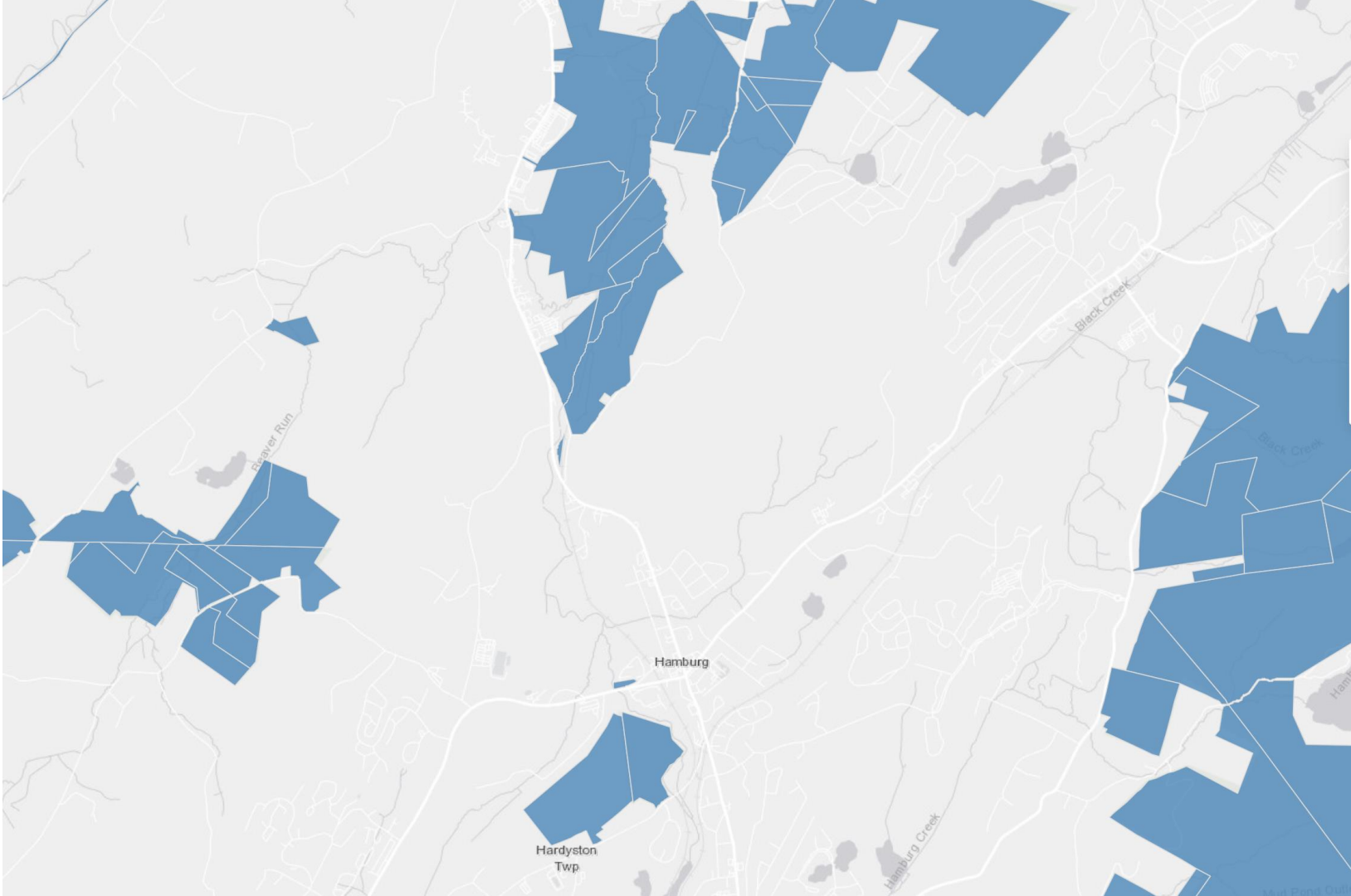


- 7 Open-Space Zonings
- Multiple easement parties required north of Junction Street
- ROW access blocked by private owners
- 3 Parking Locations
- Walkkill River Watershed
- Native American Sites
- Parkers Shaft
- NJ Zinc Mill No. 2











# Hamburg Borough Summary



- The Gingerbread Castle
- Joseph Sharp's Iron Works *SCHM*
- Another Large Factory
- Walkkill Valley Regional High School
- Bethany Chapel *NRHP*
- Nabisco Mill
- Paper Mill Falls
- 5 Open-Space Zonings
- ROW access blocked by private owners
- Easements required with multiple parties
- Walkkill River Watershed
- 2 Parking Locations
- Native American Sites



# Unique Value of Each Municipality

- Highlight unique sites
- Community building
- Economic development
- Tourism & education
- Improved Quality of Life
- Connectivity cultural & historical heritage



# Value of Previous Rail-Trail Development



- Learning from mistakes
- Taking a new perspective
- Using new organizations & methods
- Build off of established foundation
- Maximize the resources for development



# Public Support & Community Involvement

- Community engagement
- Collaboration amongst groups
- Education
- Trail design
- Volunteer opportunities
- Marketing & Promotion
- Explain benefit to the community
- Ensure accessibility



# Easements & Acquisitions



- Research and Planning for accurate parcel data
- Communication and Outreach between organizations
- Establish negotiations with parties of interest
- Prepare for alternative alignments
- Funding plans
- Compliance with laws and regulations

# Funding of Rail-Trails

- Federal grants; FHWA, NPS, FTA
- State grants; NJTPA/NJDOT & NJDEP
- County/municipal funding
- Private funding
- Local funding
- Fundraising
- Tax Credits
- Community Development Block Grant



# Maintenance of Sussex County Rail-Trails



- Kittatinny Valley State Park maintenance
- New maintenance program or management group
- Volunteer programs
- “Leave No Trace” Public Education
- Planning & Prioritizing
- Funding & Staffing

# Safety & Security of Rail-Trails

- Signage & Crosswalks
- Lighting
- Emergency call locations
- First aid kits
- Efficient trail maintenance
- Report suspicious activities
- Education & outreach



# County Oversight for Rail-Trail Development



RRPictureArchives.NET Image Contributed by albert kwolek

- Coordination between municipalities
- Lead in Communication
- Head of Planning
- Funding organization
- Partnership building
- Flexibility
- Compliance & transparency
- Evaluation and monitoring

# Accessibility & Connectivity of Rail-Trails

- Physical Accessibility
- Connectivity to key locations
- Active transportation
- Safe routes to school
- Access to nature
- Economic Development
- Social connections



# Educational Value of Rail-Trails



- Historic sites
- Connectivity to and from school
- Natural environment
- Conservation
- Physical activity
- STEM, Geology & Geography
- Cultural Heritage & Community Engagement



# Utility Value of Rail-Trails

- Water utilities
- Electric utilities
- Telecommunications
- Waste management utilities
- Public transportation
- Parks and recreation





## Environmental Protection / Conservation & Preservation



- Habitat protection
- Water quality
- Air quality
- Biodiversity
- Green Infrastructure
- Sustainable development
- Climate change
- Conservation of historic resources

# References

- <https://hub.arcgis.com/datasets/sussex::sussex-county-open-space/explore?location=41.119078%2C-74.575542%2C13.90>
- <https://gis.sussex.nj.us/parceldocviewer/>
- <https://www.scmua.org/index.cfm>
- <http://www.wallkillriver.org/contact/>
- <https://www.state.nj.us/transportation/commuter/bike/countyymaps.shtm>
- <https://public-nps.opendata.arcgis.com/datasets/nps::nps-boundary-1/explore?location=41.185613%2C-74.687635%2C11.84>
- <https://www.arcgis.com/apps/webappviewer/index.html?id=2628736187bc49a6ad990a42b1db4fe1&extent=-8336592.6171%2C5028774.2487%2C-8318247.7303%2C5037249.2042%2C102100>
- <https://www.nj.gov/dep/njnlt/njpreserves.htm>
- <https://www.sussex.nj.us/cn/webpage.cfm?tpid=9030>
- <https://www.nj.gov/dep/gis/geoweb splash.htm>
- <https://njdep.maps.arcgis.com/home/gallery.html?view=grid&sortOrder=desc&sortField=modified&showFilters=false>
- <https://dep.nj.gov/njfw/conservation/wildlife-management-areas/>
- <https://njdep.maps.arcgis.com/home/item.html?id=548632a2351b41b8a0443cfc3a9f4ef6>
- <https://njdep.maps.arcgis.com/home/item.html?id=548632a2351b41b8a0443cfc3a9f4ef6>
- <https://gis-fws.opendata.arcgis.com/>
- <https://nj.gov/dep/parksandforests/map.html>
- <https://spartan.org/wp-content/uploads/2019/01/ZoningMap201610.pdf>
- <https://www.arcgis.com/apps/OnePane/basicviewer/index.html?appid=f858616539e74a5ba65434d684526a5f>

Thank you for your attention & time

A special thank you to Autumn Sylvester & Maggie Faselt for organizing this opportunity & their help at the Sussex County Department of Engineering and Planning

Do you have any questions?