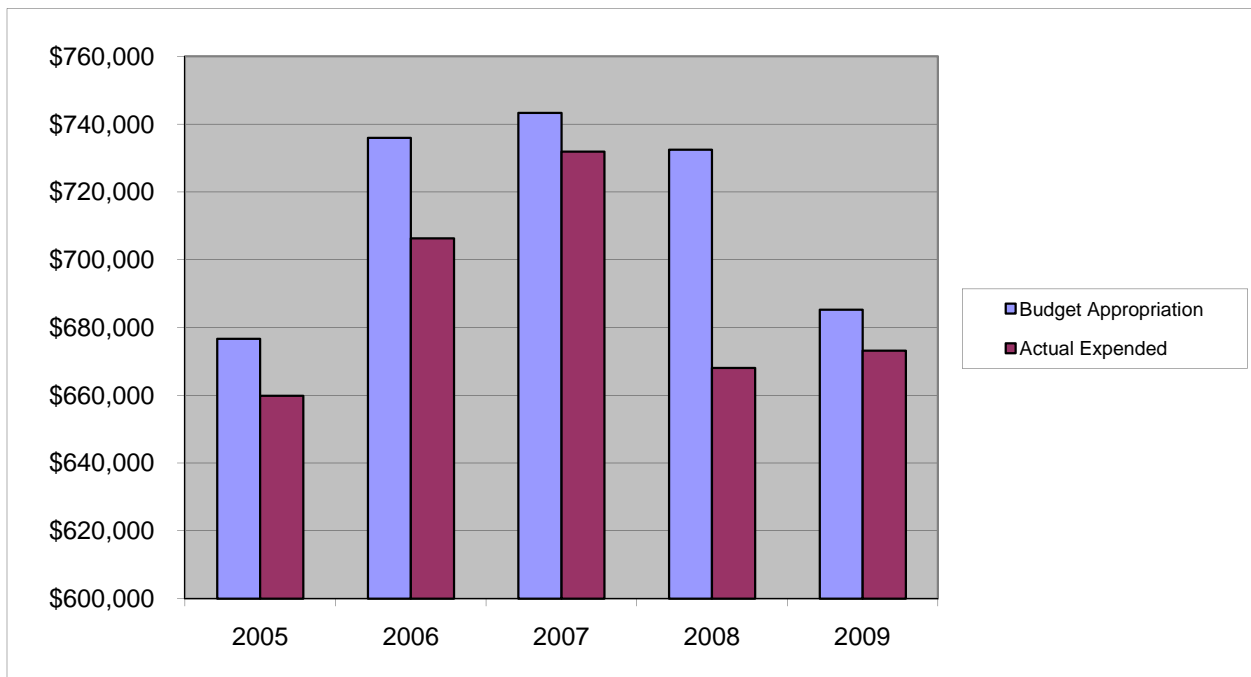


COUNTY CLERK

Salaries & Wages

	2005	2006	2007	2008	2009
Budget Appropriation	\$ 676,625.00	\$ 735,952.00	\$ 743,337.00	\$ 732,475.00	\$ 685,291.00
Actual Expended	\$ 659,878.58	\$ 706,340.17	\$ 731,856.04	\$ 668,111.45	\$ 673,135.09
Difference (App. - Exp.)	\$ 16,746.42	\$ 29,611.83	\$ 11,480.96	\$ 64,363.55	\$ 12,155.91
% Expended	97.5%	96.0%	98.5%	91.2%	98.2%
Total Budget Approp.	\$ 92,061,376	\$ 98,126,692	\$ 102,912,559	\$ 107,848,203	\$ 107,667,916
% of Total Budget Approp.	0.73%	0.75%	0.72%	0.68%	0.64%
Five Year Average (Mean) Budget Appropriation:					\$ 714,736.00
Five Year Average (Mean) Budget Expended:					\$ 687,864.27
Difference:					\$ 26,871.73



2010 BUDGET APPROPRIATION:	\$ 666,972
2009 Budget Appropriation	\$ 685,291
\$ Change	\$ (18,319)
% Change:	-2.7%

2010 Budget Appropriation	\$ 666,972
2005 Budget Appropriation	\$ 676,625
\$ Change	\$ (9,653)
% Change	-1.4%