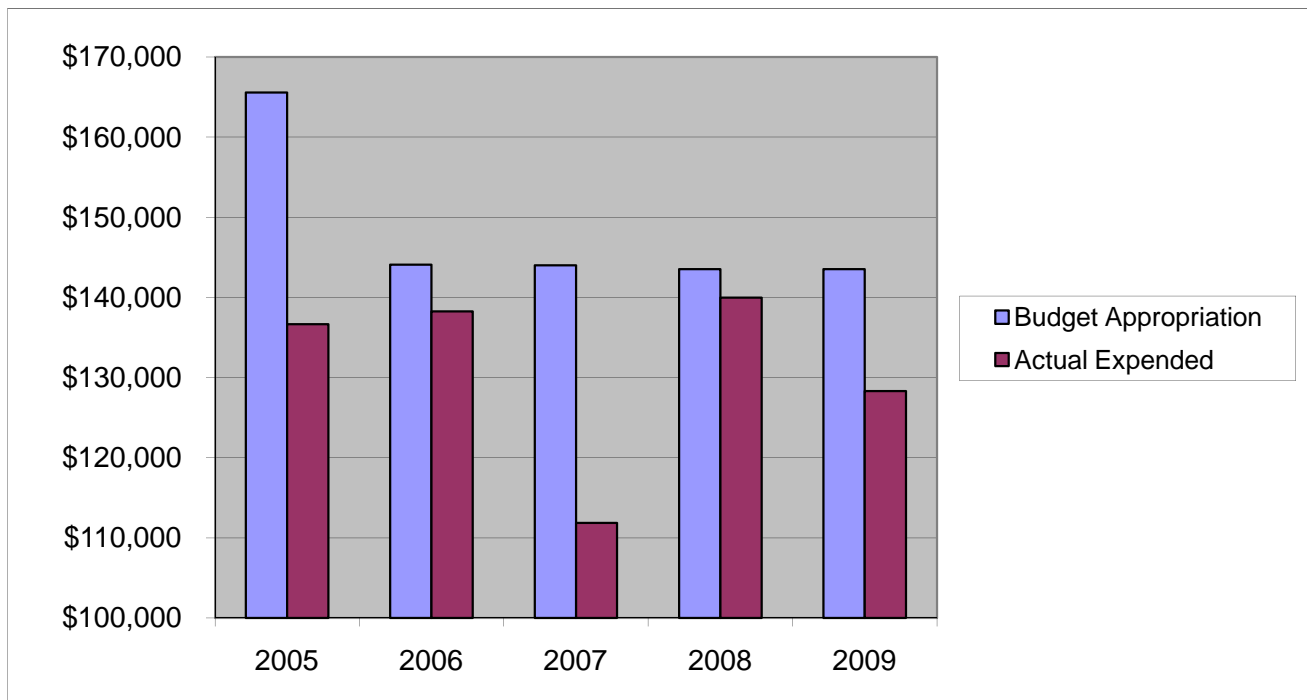


## **COUNTY MEDICAL EXAMINER**

### **Other Expenses**

	2005	2006	2007	2008	2009
Budget Appropriation	\$ 165,586.00	\$ 144,076.00	\$ 144,006.00	\$ 143,543.00	\$ 143,543.00
Actual Expended	\$ 136,671.80	\$ 138,240.45	\$ 111,842.21	\$ 139,982.74	\$ 128,330.34
Difference (App. - Exp.)	\$ 28,914.20	\$ 5,835.55	\$ 32,163.79	\$ 3,560.26	\$ 15,212.66
% Expended	82.5%	95.9%	77.7%	97.5%	89.4%
Total Budget Approp.	\$ 92,061,376	\$ 98,126,692	\$ 102,912,559	\$ 107,848,203	\$ 107,667,916
% of Total Budget Approp.	0.18%	0.15%	0.14%	0.13%	0.13%
Five Year Average (Mean) Budget Appropriation:					\$ 148,150.80
Five Year Average (Mean) Budget Expended:					\$ 131,013.51
Difference:					\$ 17,137.29



<b>2010 BUDGET APPROPRIATION:</b>	<b>\$ 143,543</b>
2009 Budget Appropriation	\$ 143,543
\$ Change	\$ -
% Change:	0.0%

2010 Budget Appropriation	\$ 143,543
2005 Budget Appropriation	\$ 165,586
\$ Change	\$ (22,043)
% Change	-13.3%