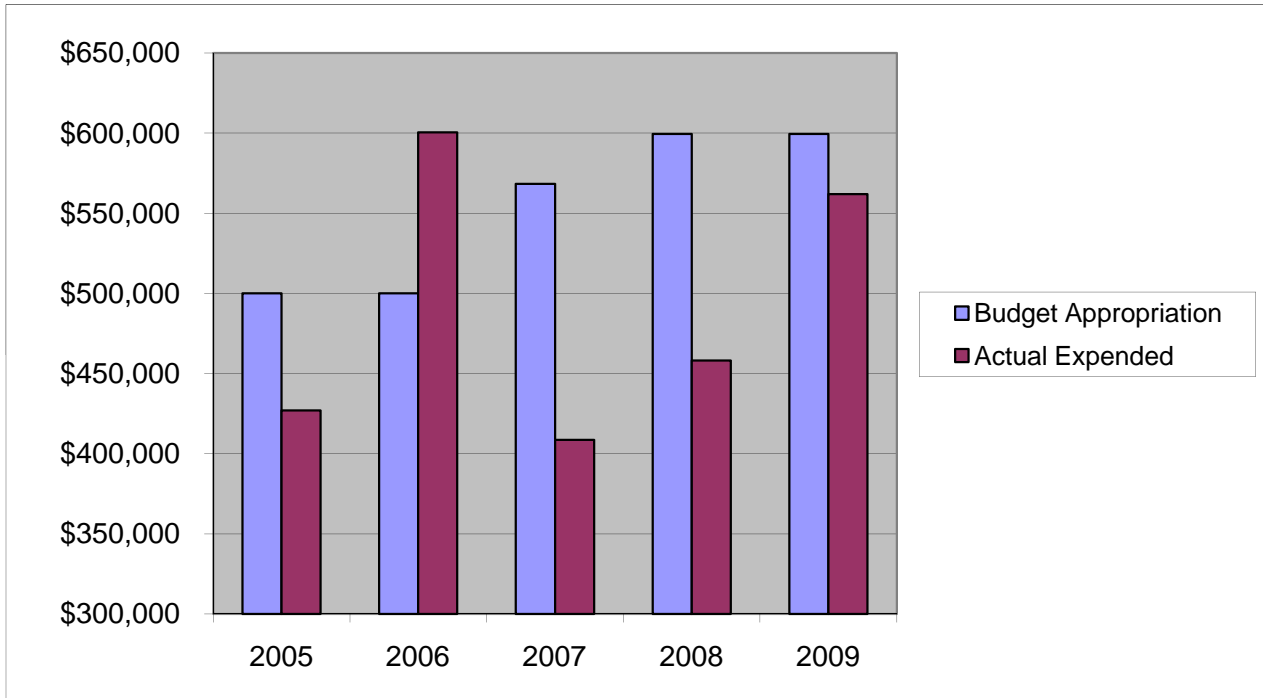


PROSECUTOR'S OFFICE

Other Expenses

	2005	2006	2007	2008	2009
Budget Appropriation	\$ 500,000.00	\$ 500,000.00	\$ 568,295.00	\$ 599,395.00	\$ 599,395.00
Actual Expended	\$ 426,993.83	\$ 600,475.86	\$ 408,549.30	\$ 458,033.52	\$ 562,038.24
Difference (App. - Exp.)	\$ 73,006.17	\$ (100,475.86)	\$ 159,745.70	\$ 141,361.48	\$ 37,356.76
% Expended	85.4%	120.1%	71.9%	76.4%	93.8%
Total Budget Approp.	\$ 92,061,376	\$ 98,126,692	\$ 102,912,559	\$ 107,848,203	\$ 107,667,916
% of Total Budget Approp.	0.54%	0.51%	0.55%	0.56%	0.56%
Five Year Average (Mean) Budget Appropriation:					\$ 553,417.00
Five Year Average (Mean) Budget Expended:					\$ 491,218.15
Difference:					\$ 62,198.85



2010 BUDGET APPROPRIATION:	\$ 599,535
2009 Budget Appropriation	\$ 599,395
\$ Change	\$ 140
% Change:	0.0%

Proposed 2010 Budget Appropriation	\$ 599,535
2005 Budget Appropriation	\$ 500,000
\$ Change	\$ 99,535
% Change	19.9%