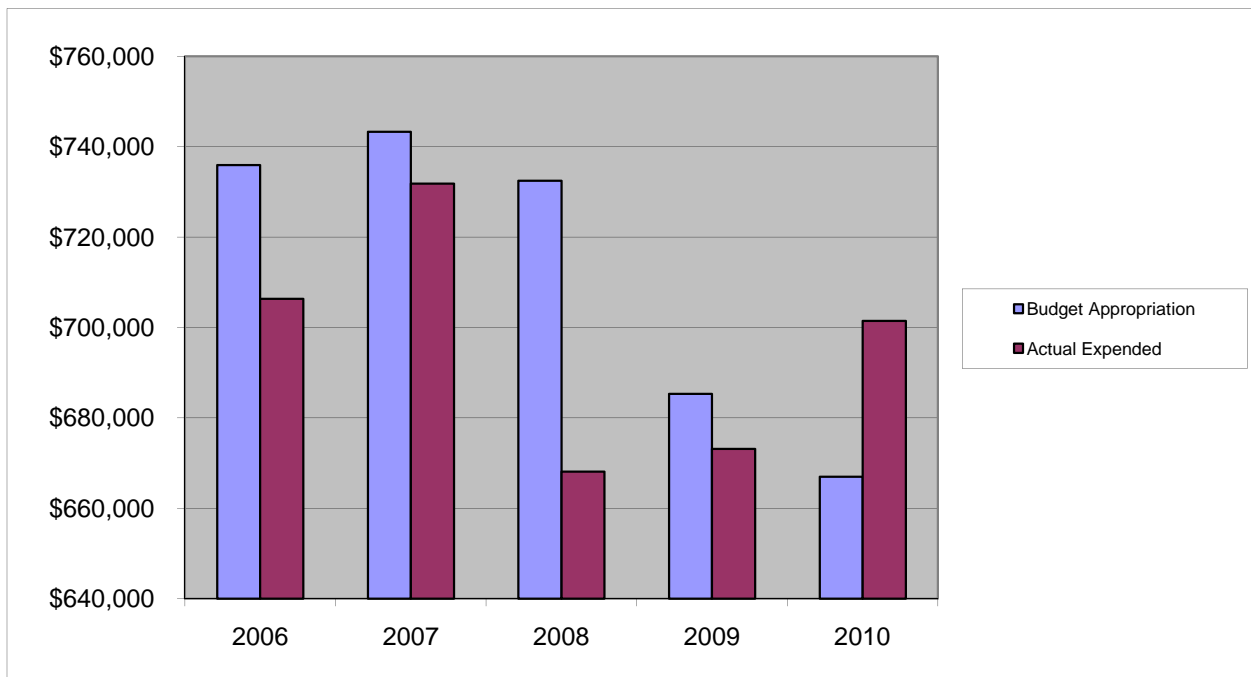


COUNTY CLERK

Salaries & Wages

	2006	2007	2008	2009	2010
Budget Appropriation	\$ 735,952.00	\$ 743,337.00	\$ 732,475.00	\$ 685,291.00	\$ 666,972.00
Actual Expended	\$ 706,340.17	\$ 731,856.04	\$ 668,111.45	\$ 673,135.09	\$ 701,453.00
Difference (App. - Exp.)	\$ 29,611.83	\$ 11,480.96	\$ 64,363.55	\$ 12,155.91	\$ (34,481.00)
% Expended	96.0%	98.5%	91.2%	98.2%	105.2%
Total Budget Approp.	\$ 98,126,692	\$ 102,912,559	\$ 107,848,203	\$ 107,667,916	\$ 108,900,890
% of Total Budget Approp.	0.75%	0.72%	0.68%	0.64%	0.61%
Five Year Average (Mean) Budget Appropriation:					\$ 712,805.40
Five Year Average (Mean) Budget Expended:					\$ 696,179.15
Difference:					\$ 16,626.25



2011 BUDGET APPROPRIATION:	\$ 628,969
2010 Budget Appropriation	\$ 666,972
\$ Change	\$ (38,003)
% Change:	-5.7%

2011 Budget Appropriation	\$ 628,969
2006 Budget Appropriation	\$ 735,952
\$ Change	\$ (106,983)
% Change	-14.5%