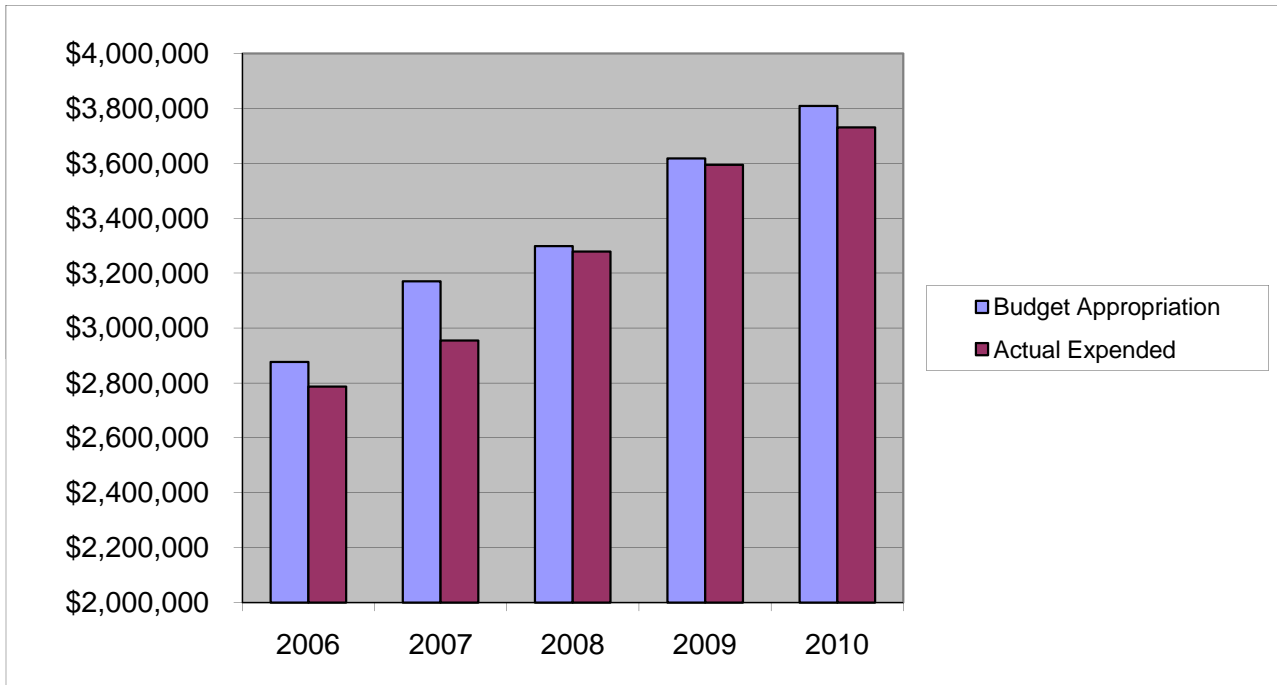


SHERIFF'S OFFICE

Salaries & Wages (includes both Regulatory & Judicial Salaries)

	2006	2007	2008	2009	2010
Budget Appropriation	\$ 2,876,725.00	\$ 3,170,028.00	\$ 3,298,907.00	\$ 3,617,239.00	\$ 3,809,448.00
Actual Expended	\$ 2,786,295.71	\$ 2,954,538.97	\$ 3,278,755.89	\$ 3,593,905.83	\$ 3,730,566.68
Difference (App. - Exp.)	\$ 90,429.29	\$ 215,489.03	\$ 20,151.11	\$ 23,333.17	\$ 78,881.32
% Expended	96.9%	93.2%	99.4%	99.4%	97.9%
Total Budget Approp.	\$ 98,126,692	\$ 102,912,559	\$ 107,848,203	\$ 107,667,916	\$108,900,890
% of Total Budget Approp.	2.93%	3.08%	3.06%	3.36%	3.50%
Five Year Average (Mean) Budget Appropriation:					\$ 3,354,469.40
Five Year Average (Mean) Budget Expended:					\$ 3,268,812.62
Difference:					\$ 85,656.78



2011 BUDGET APPROPRIATION:	\$ 3,643,044
2010 Budget Appropriation	\$ 3,809,448
\$ Change	\$ (166,404)
% Change:	-4.4%

2011 Budget Appropriation	\$ 3,643,044
2006 Budget Appropriation	\$ 2,876,725
\$ Change	\$ 766,319
% Change	26.6%