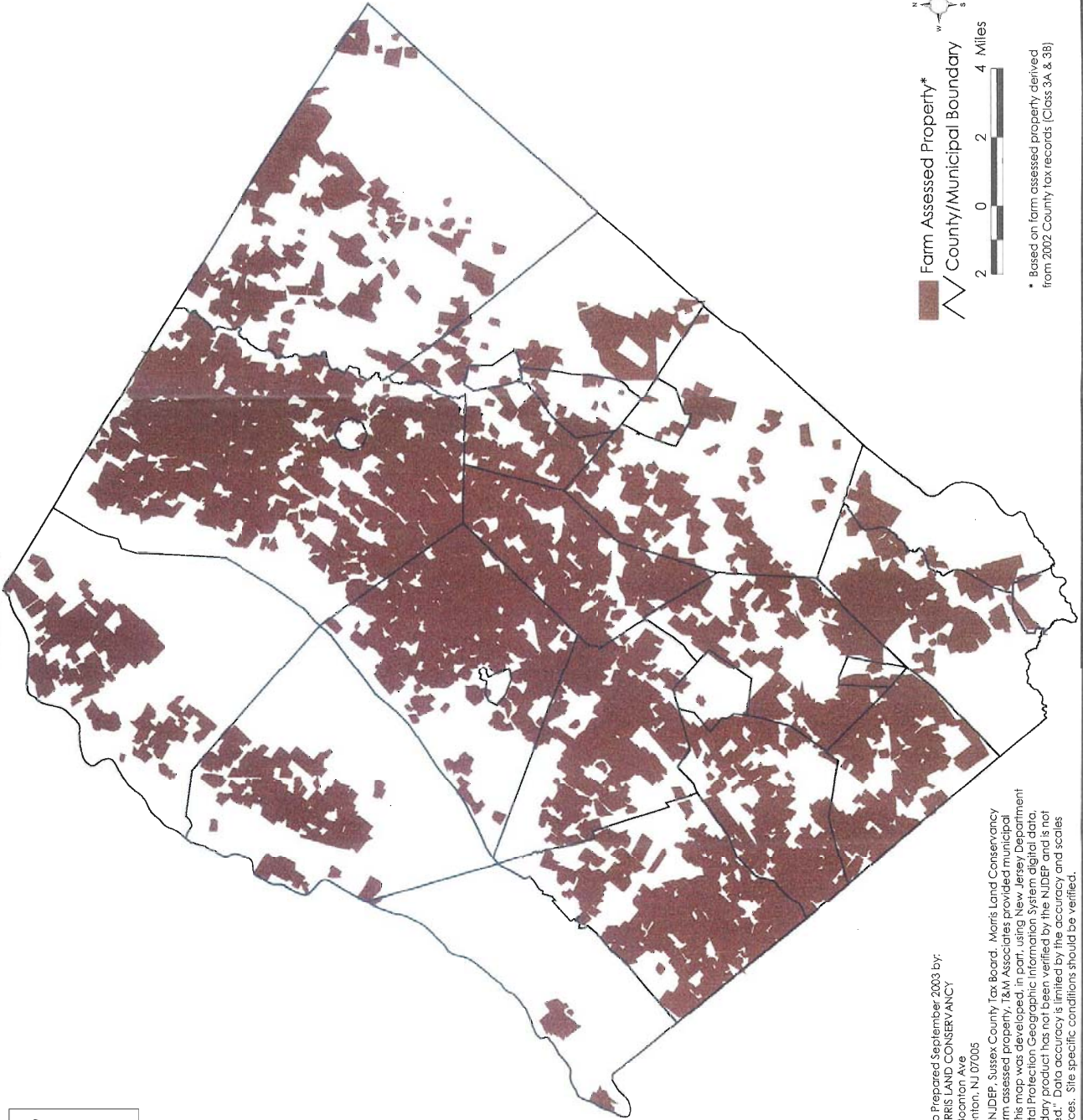





MAP 16:
Farm Assessed Property
in
Sussex County



 Farm Assessed Property*
 County/Municipal Boundary

* Based on farm assessed property derived from 2002 County tax records (Class 3A & 3B)




 Map Prepared September 2003 by:
 MORRIS LAND CONSERVANCY
 19 Boonton Ave
 Boonton, NJ 07005

Data Sources: NJDEP, Sussex County Tax Board, Morris Land Conservancy mapped all farm assessed property. T&M Associates provided municipal boundaries. This map was developed, in part, using New Jersey Department of Environmental Protection Geographic Information System digital data, but this secondary product has not been verified by the NJDEP and is not state-authorized. Data accuracy is limited by the accuracy and scales of original sources. Site specific conditions should be verified.