



DEPARTMENT OF ENGINEERING AND PLANNING
One Spring Street
Newton, New Jersey 07860
973-579-0430
dpw@sussex.nj.us
John C. Risko, P.E., P.L.S., P.P.
Division Director/Assistant County Engineer

FY 2011 Sussex County Paving Program

Distributed: August 15, 2012

Project: Completion Notice

Resurfacing of Various Sussex County Routes.

FY 2011 Funds – Spring 2012 Project

Includes the Milling, Paving, and Striping of select distressed Sussex County Routes. Route selection is predicated upon a conditional assessment and rating completed by the Sussex County Division of Engineering and Sussex County Division of Public Works. Resulting route ratings can then be used to prioritize roads for allocation of available resources.

Schedule: UPDATED

Work Hours – in road 7:00am to 6:00pm

Schedule of Work:

Mill and Pave: (Tentative tasks italicized)

- ✓ Mon June 4: CR 517 Andover - Tranquility Road. (Warren Cnty Line to SR 206), 5 days- **Paving Complete**
- ✓ Tues June 12: CR 645 Layton Hainesville Rd, 5 days - **Paving Complete**
- ✓ Thursday June 21: CR 667 Lake Wallkill Rd, 3 days - **Paving Complete**
- ✓ Thursday June 28: CR 517 McAfee Greens Corner Rd, 6 days **Paving Complete**

Striping and Pavement Markings: (Tentative)

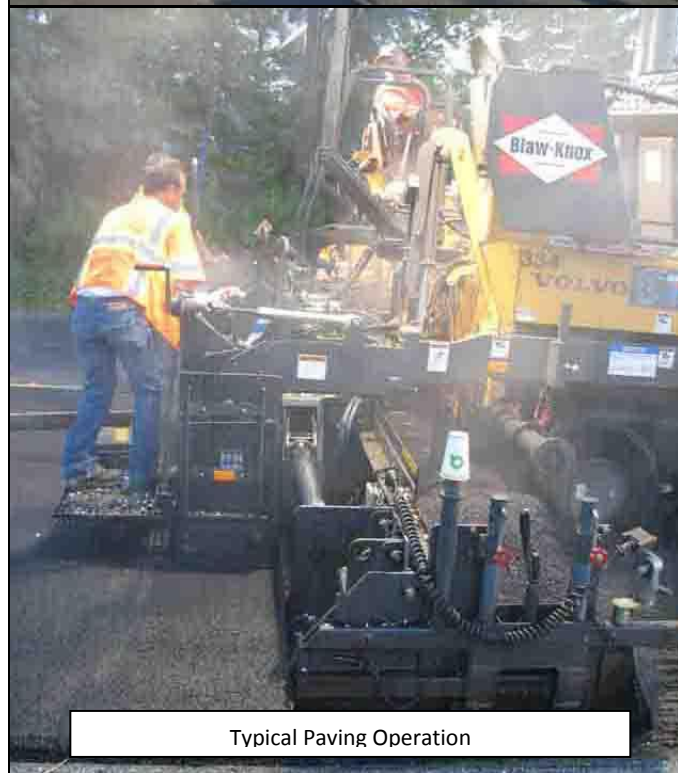
- ✓ July 12-16: CR 517 Andover - Tranquility Road. – **Complete**
- ✓ June 26 & 27: CR 645 Layton Haynesville Rd – **Complete**
- ✓ July 2: CR 667 Lake Wallkill Rd – **Complete**
- ✓ July 17-19: CR 517 McAfee Greens Corner – **Complete**

Notes:

1. Tentative Schedule based upon expected contractor projected work progression
2. Schedule subject to weather delays.



Typical Milling Operation



Typical Paving Operation



DEPARTMENT OF ENGINEERING AND PLANNING
One Spring Street
Newton, New Jersey 07860
973-579-0430
dpw@sussex.nj.us
John C. Risko, P.E., P.L.S., P.P.
Division Director/Assistant County Engineer

FY 2011 Sussex County Paving Program

Distributed: August 15, 2012

Contract:

Low Bidder: Schifano Construction Corporation in the amount of \$2,868,365.55
Project was awarded during Sussex County Board of Chosen Freeholder meeting on May 9, 2012.

Funding:

- \$1,251,664.26 – NJ State Aid to Counties
- \$1,616,701.29 - Sussex County Capital Funds

Contact Information:

For more information about this project please feel free to contact Bill Koppenaal, P.E., Chief Engineer at the Sussex County Division of Engineering 973-579-0430 or emails can be sent to dpw@sussex.nj.us

Traffic Impacts:

EXPECT DELAYS, most work conducted under single-lane closures.

These projects can also be found on the Sussex County Interactive Bridge and Road Closure Web Site at:
[SC Bridge And Road Map](#)





DEPARTMENT OF ENGINEERING AND PLANNING
 One Spring Street
 Newton, New Jersey 07860
 973-579-0430
dpw@sussex.nj.us
 John C. Risko, P.E., P.L.S., P.P.
 Division Director/Assistant County Engineer

FY 2011 Sussex County Paving Program

Distributed: August 15, 2012

Work Location Data:

Map Note: FY 2011 Paving Project awarded on May 9, 2012.
 Construction underway since late May 2012 and lasted into mid July 2012

