



DEPARTMENT OF ENGINEERING AND PLANNING
 Division of Engineering
 One Spring Street
 Newton, New Jersey 07860
 973-579-0430
 dpw@sussex.nj.us
 John C. Risko, P.E., P.L.S., P.P.
 Division Director/Assistant County Engineer

Project Notice – CR 607 Maxim Dr Wall

Distributed: Oct 3, 2014

UTILITY RELOCATION WORK

ADVANCED CONSTRUCTION NOTICE

Project:

This work includes the Utility Relocation Phase of the Project and is being completed in advance of the programmed replacement of a 180-ft long retaining wall supporting County Route 607, a.k.a. Maxim Drive, along the frontage of 263-265 Maxim Drive.

Anticipated Traffic Impacts:

Utility Work will require a full road closure of CR 607 on a DAILY basis (reopening after hours) in the vicinity of the subject wall. A map of the proposed detour is included later in this notice.

Beginning on or about October 16th
Daily Closures: 8:30 a.m. to 2:10 p.m.

Utility Work Schedule:

- ✓ Utility Design Summer 2014
- ✓ Homeowner Coordination August - September 2014
- **Local Coordination Ongoing**
 - Forestry (Tree Clearing) Beg Oct 16 (1 week)
 - Set Poles +/- Oct 22
 - Line Work +/- Oct 24 (1 week)

(Anticipated Duration +/- 2 weeks)



Picture of CR 607, Maxim Drive, above Retaining Wall – Area of Utility Work



Picture of CR 607 Retaining Wall

Contact Information:

For more information about this phase of the project please feel free to contact Bill Koppenaal, Chief Engineer, of the Sussex County Division of Engineering at 973-579-0430 or email at dpw@sussex.nj.us



DEPARTMENT OF ENGINEERING AND PLANNING
 Division of Engineering
 One Spring Street
 Newton, New Jersey 07860
 973-579-0430
 dpw@sussex.nj.us
 John C. Risko, P.E., P.L.S., P.P.
 Division Director/Assistant County Engineer

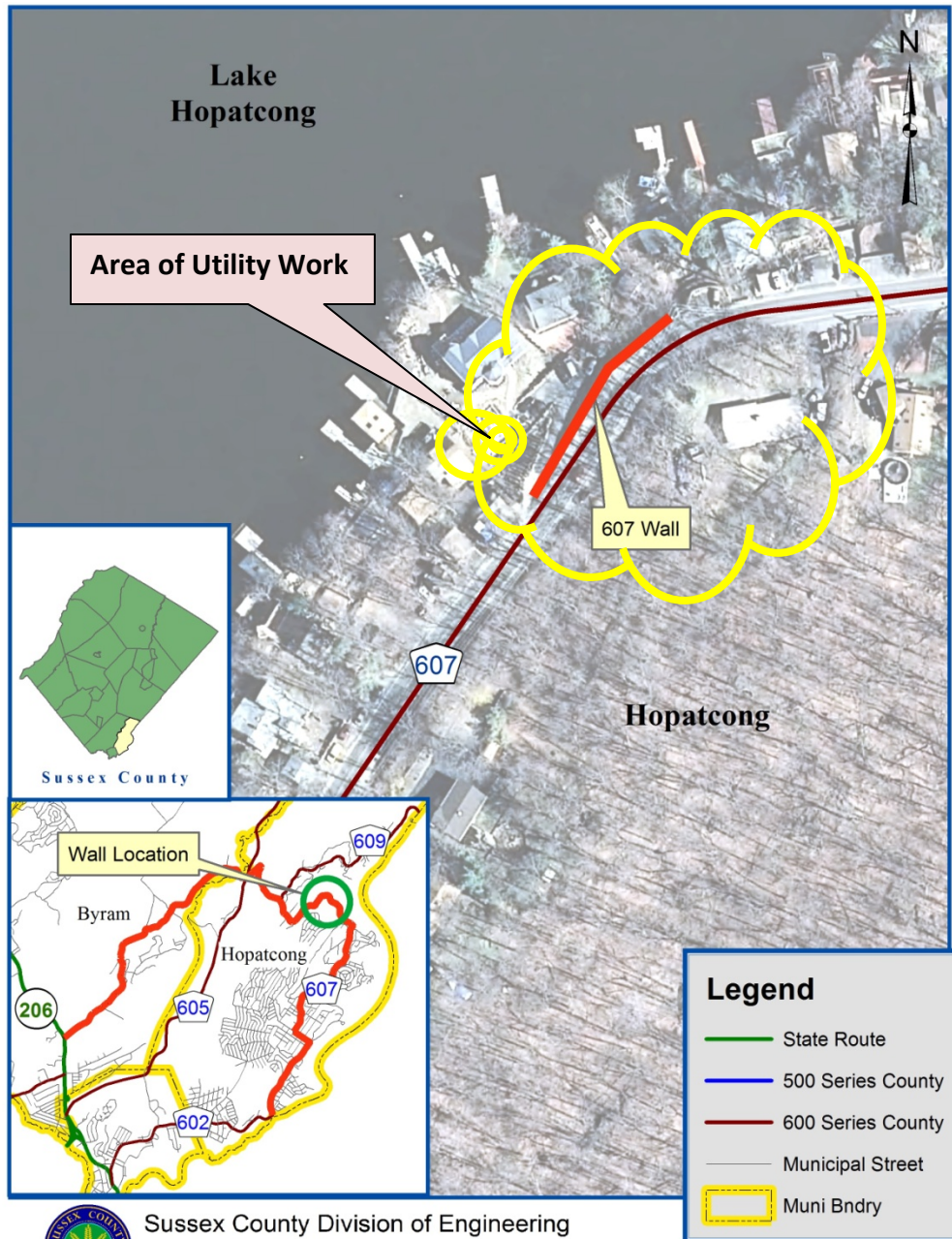
Project Notice – CR 607 Maxim Dr Wall

Distributed: Oct 3, 2014

UTILITY RELOCATION WORK

Location Map: CR 607 Retaining Wall near 263-265 Maxim Drive

Area of Utility Relocation Work



Sussex County Division of Engineering
 County Route 607
 Location Map - Not to Scale



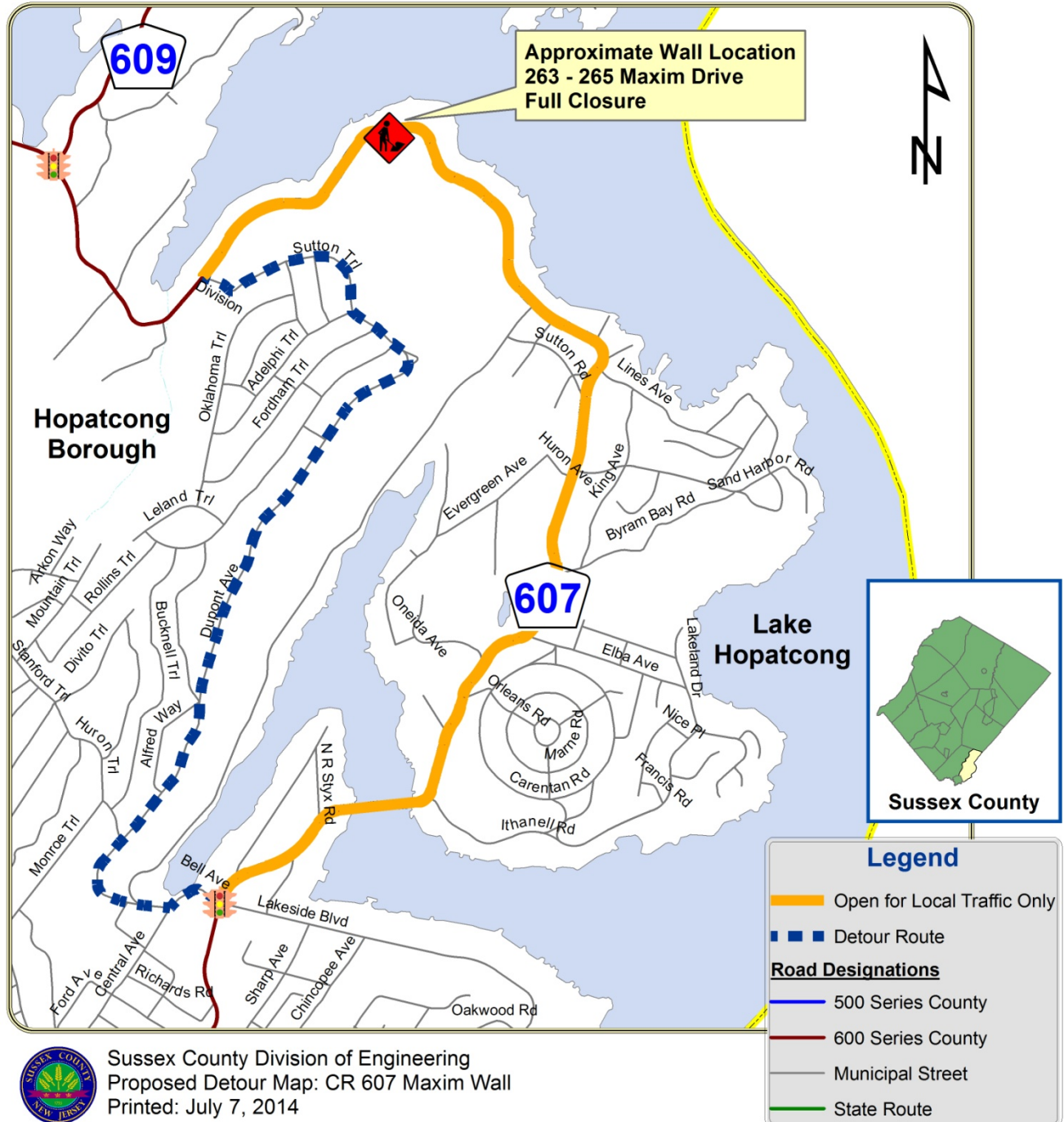
DEPARTMENT OF ENGINEERING AND PLANNING
 Division of Engineering
 One Spring Street
 Newton, New Jersey 07860
 973-579-0430
 dpw@sussex.nj.us
 John C. Risko, P.E., P.L.S., P.P.
 Division Director/Assistant County Engineer

Project Notice – CR 607 Maxim Dr Wall

Distributed: Oct 3, 2014

UTILITY RELOCATION WORK

Map: CR 607 Utility Relocation Work – Daily Closure & Detour



Sussex County Division of Engineering
 Proposed Detour Map: CR 607 Maxim Wall
 Printed: July 7, 2014

X:\Roads\607\06 Projects\263-265 Maxim Dr Retaining Wall\2013 Replacement\04 Design\10 Corr\20 Notices\05 Pub Outrch\20140701_NTC_607 Maxim Wall Design Project Update.doc