



DEPARTMENT OF ENGINEERING AND PLANNING
 Division of Engineering
 One Spring Street
 Newton, New Jersey 07860
 973-579-0430
 dpw@sussex.nj.us
 William J. Koppelaar, P.E.
 Division Director/Assistant County Engineer

Completion Notice – CR 607 Maxim Dr Wall Replacement Distributed: Aug 25, 2015

Project:

Replacement of a 180-ft long retaining wall which supports County Route 607, a.k.a. Maxim Drive, along the frontage of 263-265 Maxim Drive.

Designer:

Genesis Engineering LLC, Lafayette, NJ

Contractor:

Awarded to Bob Viersma & Sons, Inc., of Allamuchy, NJ for \$413,129.75

Construction Schedule:

Construction Start: June 29, 2015
 Road Reopening: Aug 25, 2015

Traffic Impacts:

As of 9:00 AM on August 25, 2015, CR 607 (Maxim Drive) has been fully reopened to traffic at the retaining wall along the frontage of 263-265 Maxim Drive.

Any remaining punch list work will take place along the roadway shoulders with no anticipated impact to traffic.

Project Funding:

100% Sussex County Capital Funds

Construction Activities:

- ✓ Installation of Detour Signs - *Complete*
- ✓ Road Closure and Mobilization to Site - *Complete*
- ✓ Demolition of Existing Retaining Wall - *Complete*
- ✓ Repairs / Upgrades to Existing Drainage System - *Complete*
- ✓ Installation of New Modular Block Gravity Retaining Wall System - *Complete*
- ✓ Backfill and Grade Roadway - *Complete*
- ✓ Landscaping - *Complete*
- ✓ Roadway Paving and Striping - *Complete*
- ✓ Guide Rail Installation – *Complete*
- ✓ Open Roadway to Traffic – *Complete*
- **Fence Installation – *In Progress (75% Complete)***
- **Final Punch List Items – *In Progress***

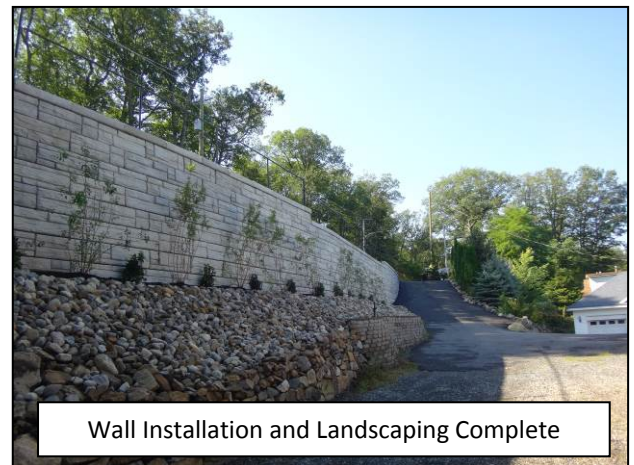
For more information about this project please feel free to contact Matt Sinke, Principal Engineer, of the Sussex County Division of Engineering at 973-579-0430 or email at dpw@sussex.nj.us



Core Drilling for Fence Post Installation



Roadway Fully Reopened to Traffic



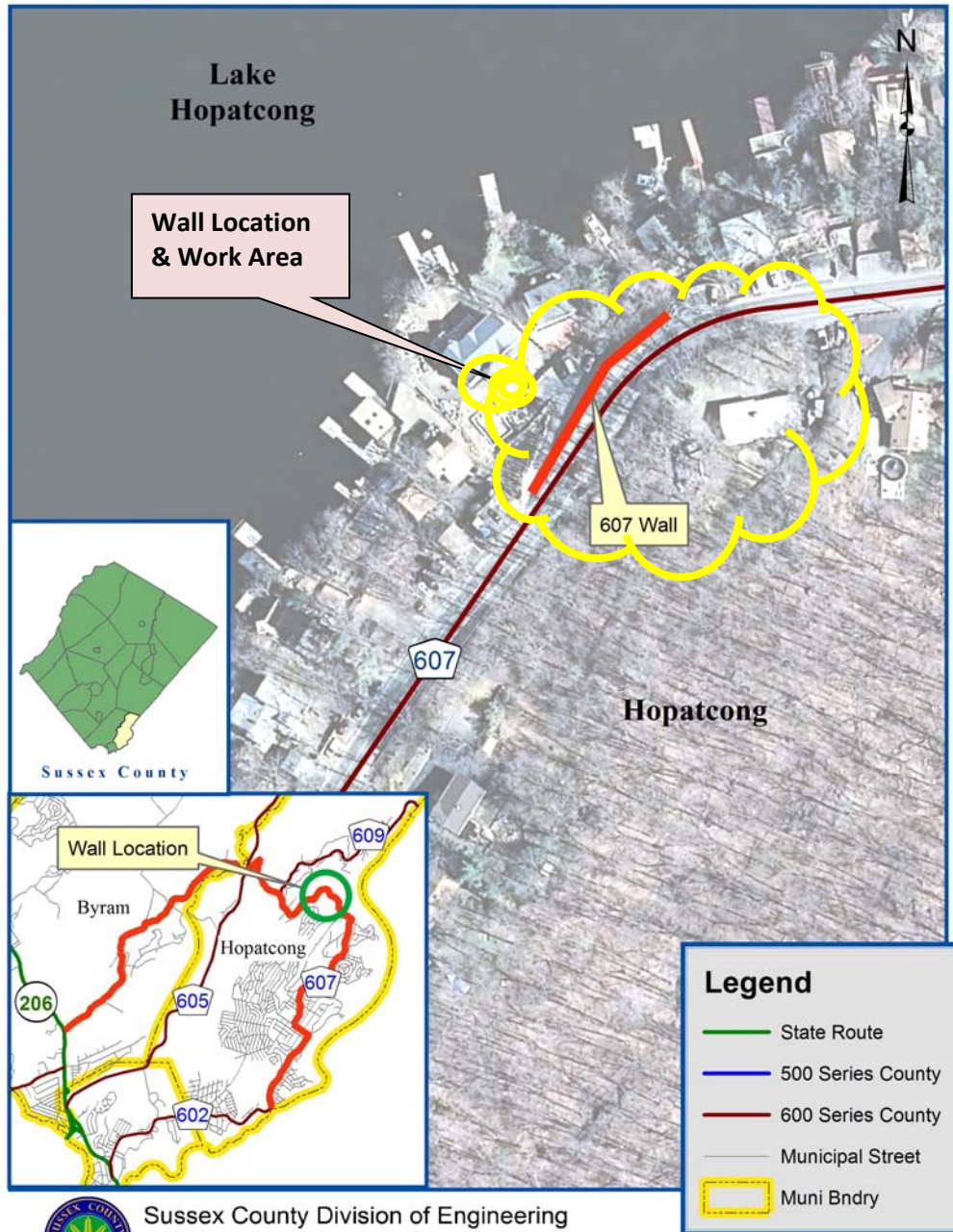
Wall Installation and Landscaping Complete



DEPARTMENT OF ENGINEERING AND PLANNING
 Division of Engineering
 One Spring Street
 Newton, New Jersey 07860
 973-579-0430
 dpw@sussex.nj.us
 William J. Koppenaal, P.E.
 Division Director/Assistant County Engineer

Completion Notice – CR 607 Maxim Dr Wall Replacement Distributed: Aug 25, 2015

Location Map: CR 607 Retaining Wall near 263-265 Maxim Drive



Sussex County Division of Engineering
 County Route 607
 Location Map - Not to Scale