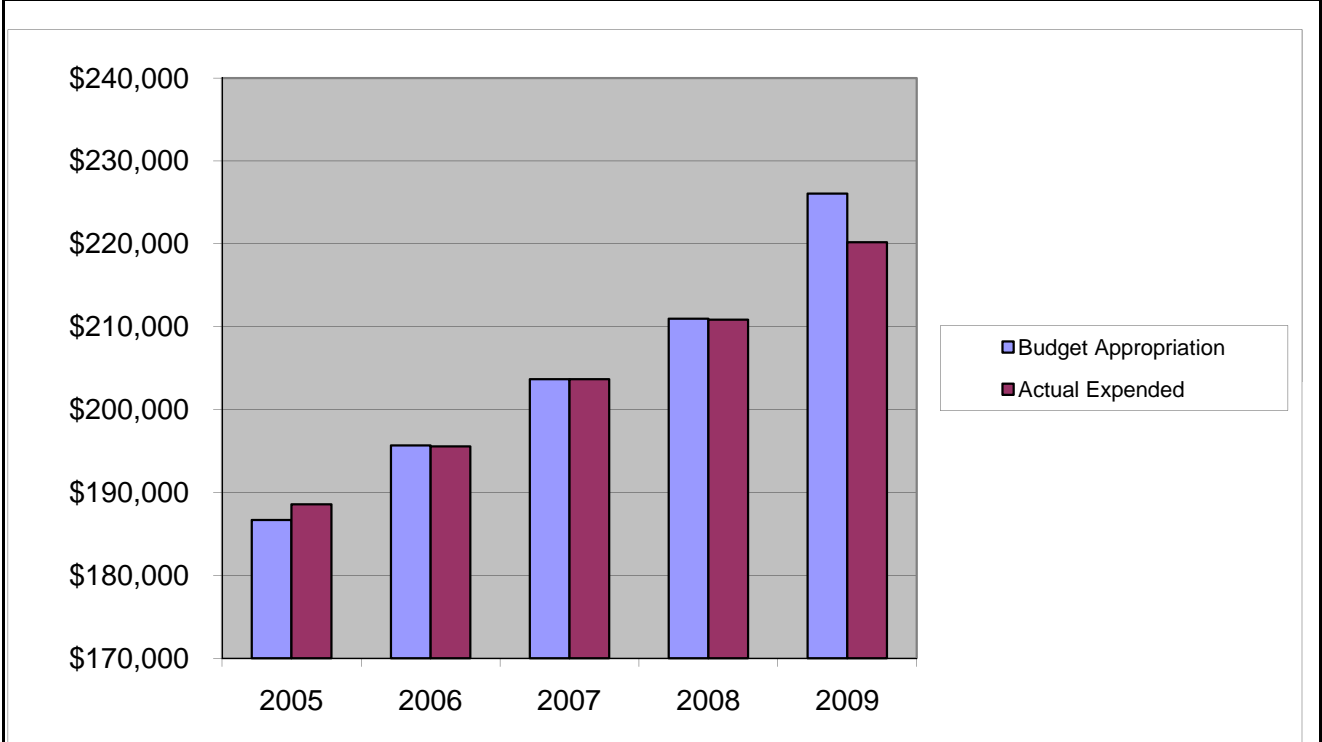


**COUNTY ADMINISTRATOR'S OFFICE**  
**Salaries & Wages**

	2005	2006	2007	2008	2009
Budget Appropriation	\$ 186,669.00	\$ 195,656.00	\$ 203,667.00	\$ 210,953.00	\$ 226,080.00
Actual Expended	\$ 188,555.85	\$ 195,555.84	\$ 203,666.48	\$ 210,852.90	\$ 220,206.76
Difference (App. - Exp.)	\$ (1,886.85)	\$ 100.16	\$ 0.52	\$ 100.10	\$ 5,873.24
% Expended	101.0%	99.9%	100.0%	100.0%	97.4%
Total Budget Approp.	\$ 92,061,376	\$ 98,126,692	\$ 102,912,559	\$ 107,848,203	\$ 107,667,916
% of Total Budget Approp.	0.20%	0.20%	0.20%	0.20%	0.21%

Five Year Average (Mean) Budget Appropriation:	\$ 204,605.00
Five Year Average (Mean) Budget Expended:	\$ 203,767.57
Difference:	\$ 837.43



<b>2010 BUDGET APPROPRIATION:</b>	<b>\$ 214,615</b>
2009 Budget Appropriation	\$ 226,080
\$ Change	\$ (11,465)
% Change:	-5.1%

2010 Budget Appropriation	\$ 214,615
2005 Budget Appropriation	\$ 186,669
\$ Change	\$ 27,946
% Change	15.0%