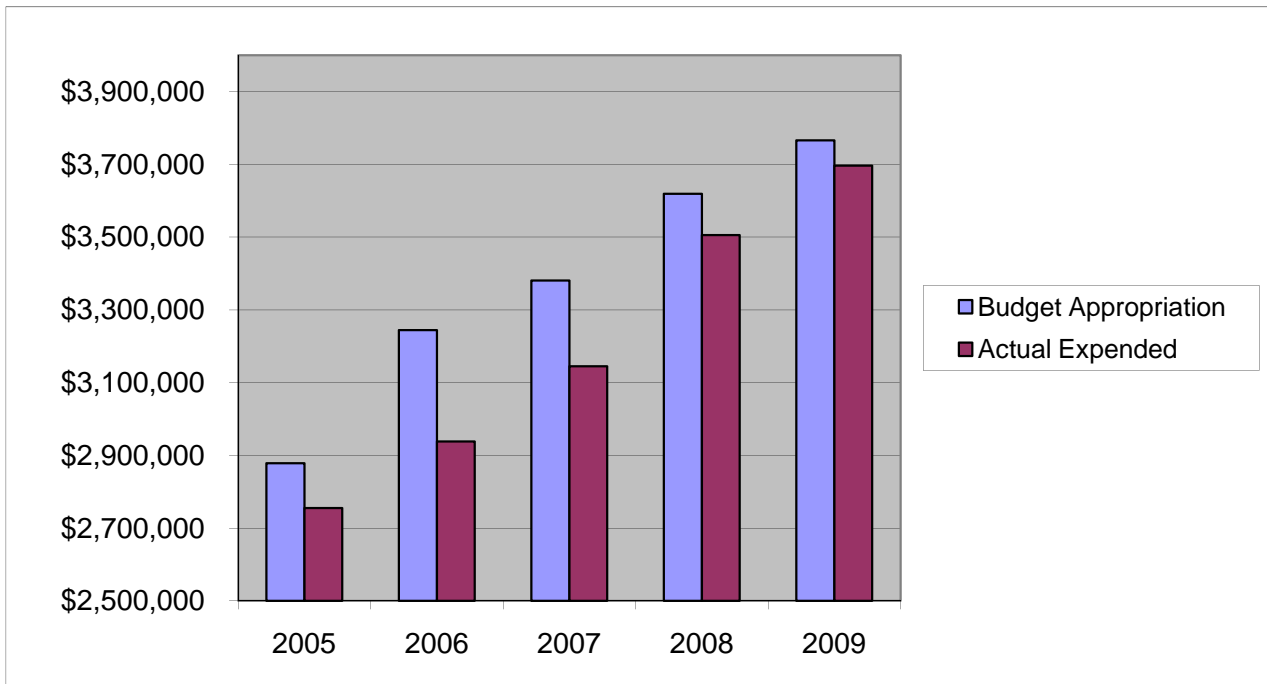


PROSECUTOR'S OFFICE

Salaries & Wages

	2005	2006	2007	2008	2009
Budget Appropriation	\$ 2,878,561.00	\$ 3,244,186.00	\$ 3,380,651.00	\$ 3,619,336.00	\$ 3,766,250.00
Actual Expended	\$ 2,754,777.00	\$ 2,937,978.11	\$ 3,145,075.29	\$ 3,505,769.62	\$ 3,696,500.00
Difference (App. - Exp.)	\$ 123,784.00	\$ 306,207.89	\$ 235,575.71	\$ 113,566.38	\$ 69,750.00
% Expended	95.7%	90.6%	93.0%	96.9%	98.1%
Total Budget Approp.	\$ 92,061,376	\$ 98,126,692	\$ 102,912,559	\$ 107,848,203	\$ 107,667,916
% of Total Budget Approp.	3.13%	3.31%	3.28%	3.36%	3.50%
Five Year Average (Mean) Budget Appropriation:					\$ 3,377,796.80
Five Year Average (Mean) Budget Expended:					\$ 3,208,020.00
Difference:					\$ 169,776.80



2010 BUDGET APPROPRIATION:	\$ 3,925,039
2009 Budget Appropriation	\$ 3,766,250
\$ Change	\$ 158,789
% Change:	4.2%

2010 Budget Appropriation	\$ 3,925,039
2005 Budget Appropriation	\$ 2,878,561
\$ Change	\$ 1,046,478
% Change	36.4%