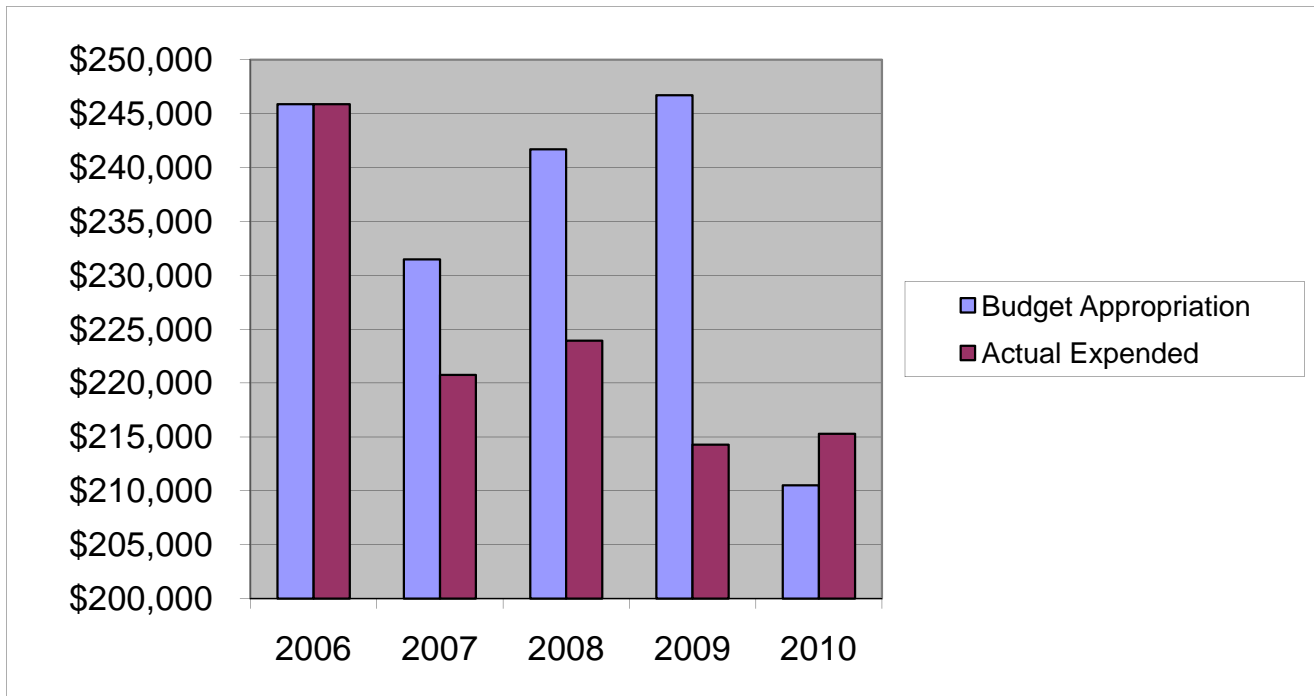


BOARD OF ELECTIONS

Salaries & Wages

	2006	2007	2008	2009	2010
Budget Appropriation	\$ 245,885.00	\$ 231,461.00	\$ 241,681.00	\$ 246,725.00	\$ 210,490.00
Actual Expended	\$ 245,883.60	\$ 220,751.76	\$ 223,917.20	\$ 214,262.39	\$ 215,278.85
Difference (App. - Exp.)	\$ 1.40	\$ 10,709.24	\$ 17,763.80	\$ 32,462.61	\$ (4,788.85)
% Expended	100.0%	95.4%	92.6%	86.8%	102.3%
Total Budget Approp.	\$ 98,126,692	\$ 102,912,559	\$ 107,848,203	\$ 107,667,916	\$ 108,900,890
% of Total Budget Approp.	0.25%	0.22%	0.22%	0.23%	0.19%
Five Year Average (Mean) Budget Appropriation:					\$ 235,248.40
Five Year Average (Mean) Budget Expended:					\$ 224,018.76
Difference:					\$ 11,229.64



2011 BUDGET APPROPRIATION:	\$ 210,590
2010 Budget Appropriation	\$ 210,490
\$ Change	\$ 100
% Change:	0.0%

2011 Budget Appropriation	\$ 210,590
2006 Budget Appropriation	\$ 245,885
\$ Change	\$ (35,295)
% Change	-14.4%