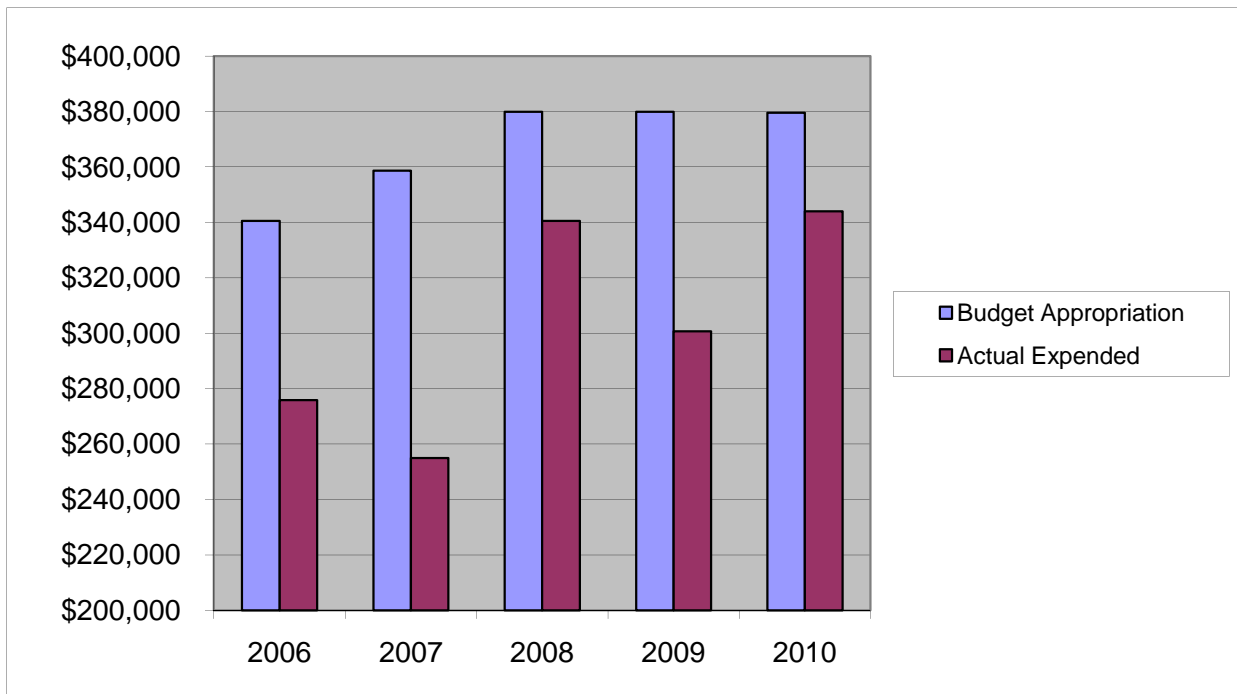


**SHERIFF'S OFFICE**  
**Other Expenses (includes both Regulatory & Judicial)**

	2006	2007	2008	2009	2010
Budget Appropriation	\$ 340,527.00	\$ 358,652.00	\$ 379,954.00	\$ 379,954.00	\$ 379,524.00
Actual Expended	\$ 275,816.56	\$ 254,959.70	\$ 340,578.45	\$ 300,684.17	\$ 344,052.25
Difference (App. - Exp.)	\$ 64,710.44	\$ 103,692.30	\$ 39,375.55	\$ 79,269.83	\$ 35,471.75
% Expended	81.0%	71.1%	89.6%	79.1%	90.7%
Total Budget Approp.	\$ 98,126,692	\$ 102,912,559	\$ 107,848,203	\$ 107,667,916	\$108,900,890
% of Total Budget Approp.	0.35%	0.35%	0.35%	0.35%	0.35%
Five Year Average (Mean) Budget Appropriation:					\$ 367,722.20
Five Year Average (Mean) Budget Expended:					\$ 303,218.23
Difference:					\$ 64,503.97



<b>2011 BUDGET APPROPRIATION:</b>	<b>\$ 379,524</b>
2010 Budget Appropriation	\$ 379,524
\$ Change	\$ -
% Change:	0.0%

Proposed 2011 Budget Appropriation	\$ 379,524
2006 Budget Appropriation	\$ 340,527
\$ Change	\$ 38,997
% Change	11.5%