



DEPARTMENT OF ENGINEERING AND PLANNING
Division of Engineering
One Spring Street
Newton, New Jersey 07860
973-579-0430
dpw@sussex.nj.us
Matthew R. Sinke, P.E.
Division Director/Assistant County Engineer

Bridge P-28 Geotechnical Soil Borings

Distributed: August 23, 2022

TRAFFIC ADVISORY FOR GEOTECHNICAL INVESTIGATION

Project:

The County is in the preliminary design phase for the reconstruction of Bridge P-28, carrying DeGroat Road (CR 675) over Little Flat Brook in Sandyston Township. Bridge P-28 is a 39-ft, single span steel girder structure founded on cast in place concrete abutments.

To properly evaluate the existing subsurface conditions for the design of a bridge rehabilitation or replacement, accurate information about the subsurface soil conditions at the bridge site must be obtained.

Therefore, a truck mounted drilling rig (see photo) will be mobilized at this location to conduct a geotechnical investigation.



Typical Soil Boring Operation Set Up

Traffic Impacts:

DeGroat Road will remain open to traffic at Bridge P-28 during the geotechnical engineering investigation, utilizing a single lane alternating traffic flagging operation. Access to driveways and municipal roads will be maintained throughout the duration of the operation.



Bridge P-28 Stream View

When:

The geotechnical investigation is expected to take two days with traffic impacts expected between 7:00 AM and 4:00 PM each day.

- **August 24 & August 25**
- Schedule subject to change pending weather conditions and unforeseen circumstances.

Contact Information:

For more information regarding this Traffic Advisory or the Bridge P-28 reconstruction project, please contact Susan Delmar at the Sussex County Division of Engineering by phone at 973-579-0430 extension 1339 or by email at sdelmar@sussex.nj.us.



Bridge P-28 Roadway View

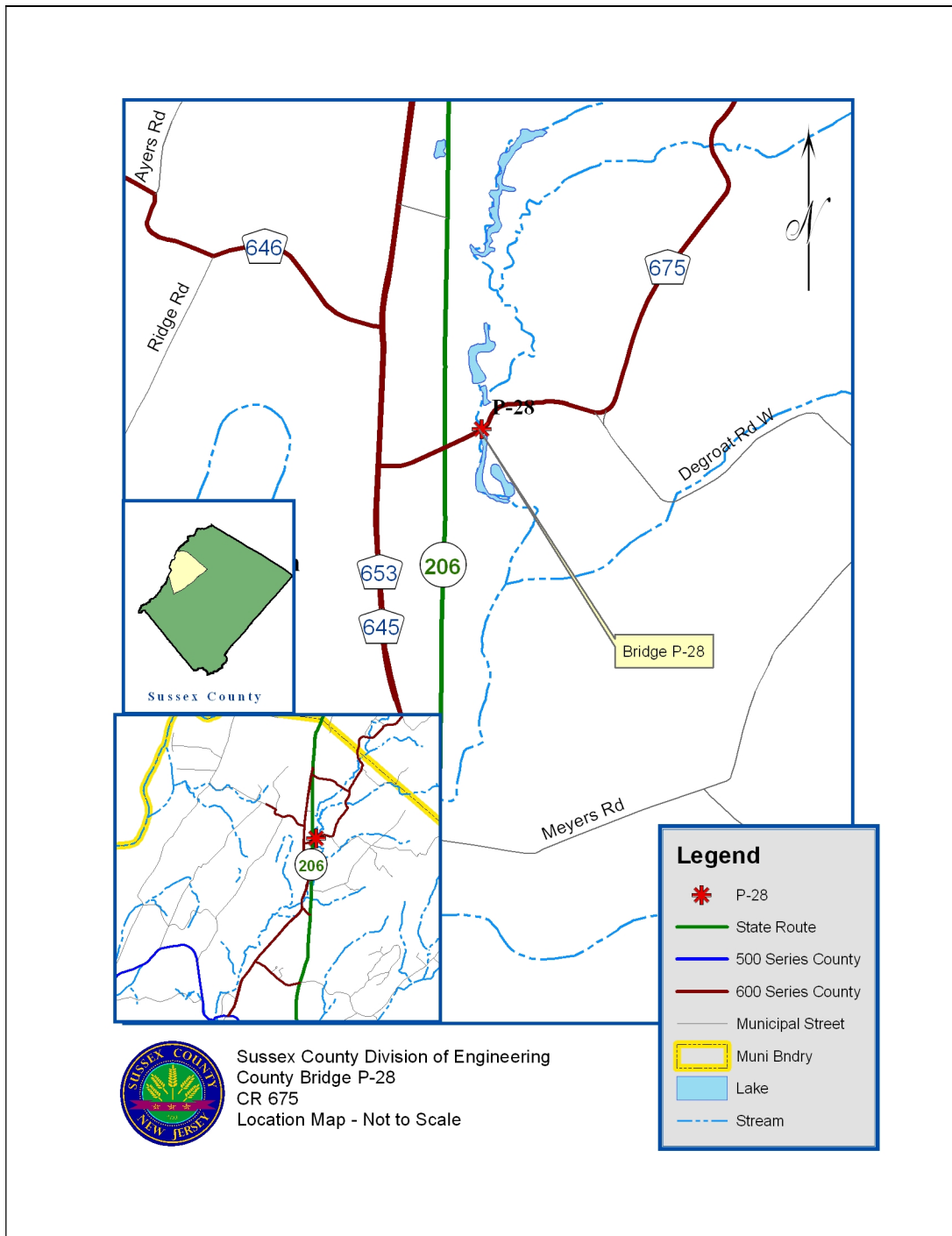


DEPARTMENT OF ENGINEERING AND PLANNING
 Division of Engineering
 One Spring Street
 Newton, New Jersey 07860
 973-579-0430
dpw@sussex.nj.us
 Matthew R. Sinke, P.E.
 Division Director/Assistant County Engineer

Bridge P-28 Geotechnical Soil Borings

Distributed: August 23, 2022

Location Map



Sussex County Division of Engineering
 County Bridge P-28
 CR 675
 Location Map - Not to Scale