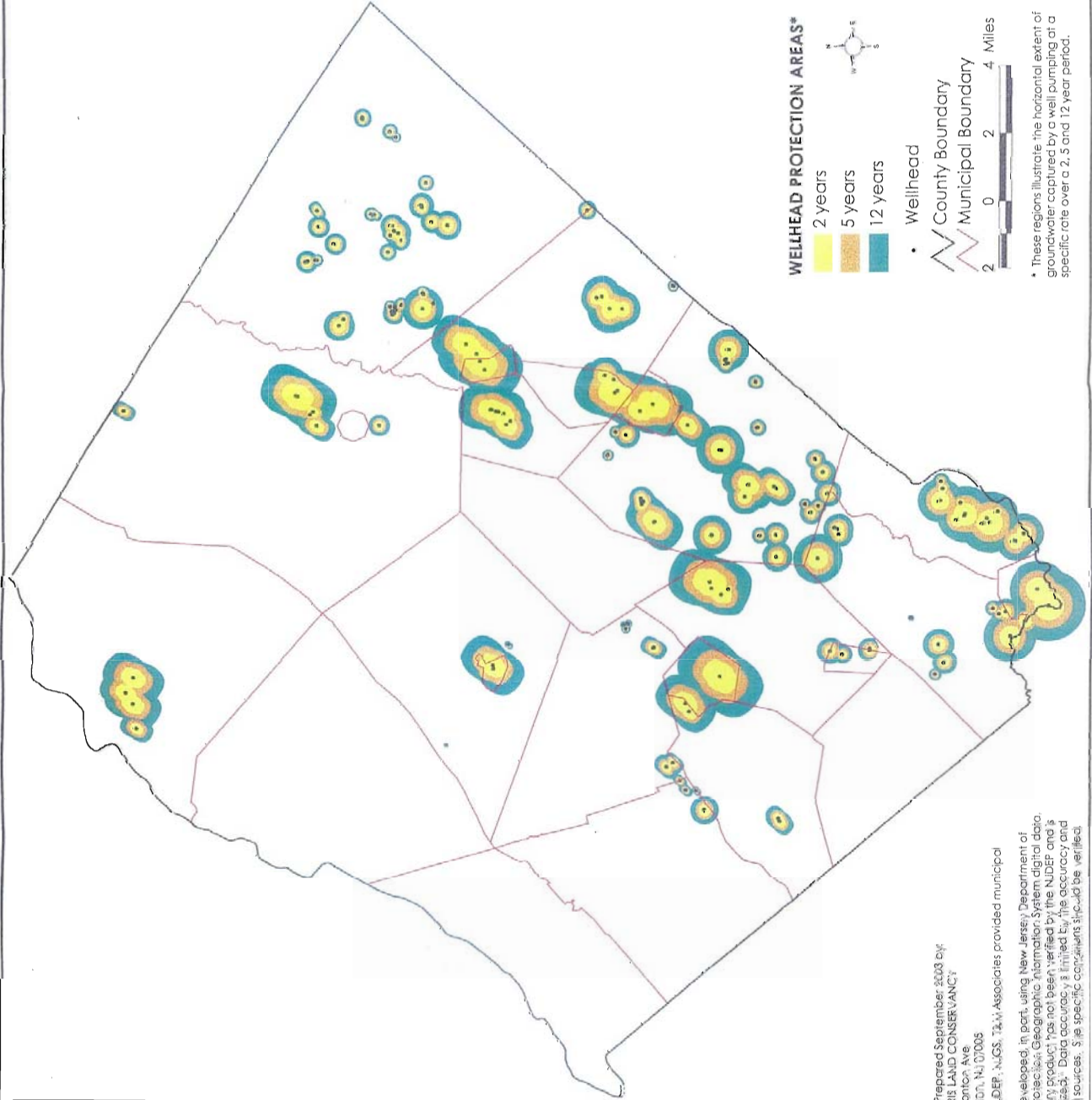


MAP 27:
Wellheads &
Wellhead Protection Areas
in
Sussex County



WELLHEAD PROTECTION AREAS*

- 2 years
- 5 years
- 12 years

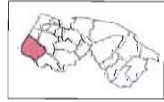
Wellhead

County Boundary

Municipal Boundary

0 2 4 Miles

* These regions illustrate the horizontal extent of groundwater captured by a well pumping at a specific rate over a 2, 5 and 12 year period.



Map Prepared September 2008 by
LORIS LATO CONSERVANCY
Bocillon, NJ 07005

Data Sources: NJDEP, NJGS, T&W Associates provided municipal boundaries.
This map was developed, in part, using New Jersey Department of Environmental Protection's Geographic Information System digital data. This secondary product has not been verified by the NJDEP and is not state-authorized. Data accuracy is limited by the accuracy and scales of original sources. Site specific conditions should be verified.