



DEPARTMENT OF ENGINEERING AND PLANNING
 Division of Engineering
 One Spring Street
 Newton, New Jersey 07860
 973-579-0430
dpw@sussex.nj.us
 John C. Risko, P.E., P.L.S., P.P.
 Division Director/Assistant County Engineer

Public Notice: Bridge X-20 Closure

Distributed: February 15, 2013

Municipality:

Wantage Township

Facility:

Bridge X-20 - **CLOSED**

Carrying Berry Road over a Tributary of the West Branch of the Papakating Creek

Advisory:

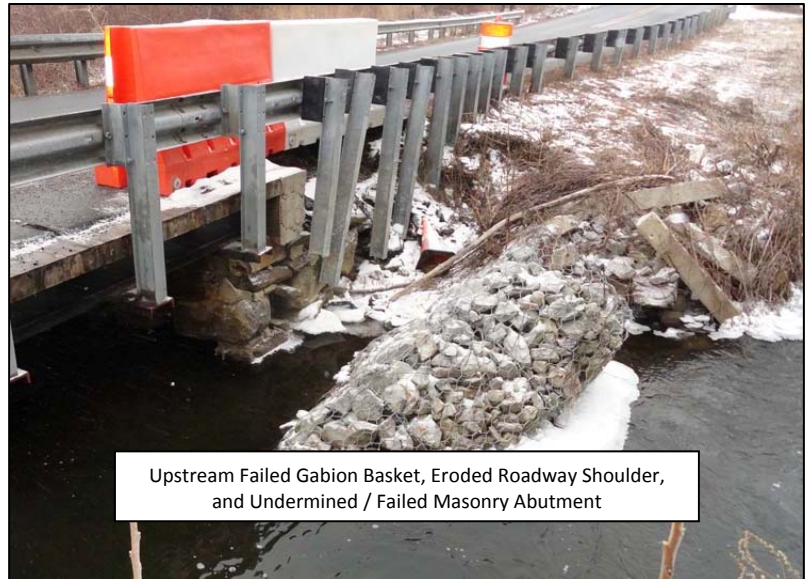
Damage sustained during the storms of 2011 and subsequent storm events (Hurricane Sandy and other significant flows) have resulted in continued deterioration of the masonry substructure and roadway embankments at Bridge X-20. In the interest of public safety Bridge X-20 has been closed pending construction of a full bridge replacement.



Bridge X-20 (Berry Road)
 Closure in Place

Actions Taken:

- **BRIDGE CLOSURE: On Friday, February 15, 2013** Bridge X-20 on Berry Road (between Armstrong Road and Sherman Ridge Road) was closed using temporary detour signs and barricades.
- Posted detour signs and concrete barriers are to be installed in the next 1-2 weeks.



Upstream Failed Gabion Basket, Eroded Roadway Shoulder, and Undermined / Failed Masonry Abutment

Follow Up Actions:

In consideration of current staffing and capital funding constraints for the Division of Engineering, a tentative schedule for the replacement of Bridge X-20 has been developed as follows:

- 2014-2015 Design New Bridge
 Estimated Design Cost = \$150,000
- 2016-2017 Construct New Bridge
 Estimated Construction Cost = \$450,000
- ESTIMATED TOTAL COST = \$600,000**

Contact Information:

For more information about this project please feel free to contact Matt Sinke, Senior Engineer, of the Sussex County Division of Engineering at 973-579-0430 or dpw@sussex.nj.us.



DEPARTMENT OF ENGINEERING AND PLANNING
 Division of Engineering
 One Spring Street
 Newton, New Jersey 07860
 973-579-0430
dpw@sussex.nj.us
 John C. Risko, P.E., P.L.S., P.P.
 Division Director/Assistant County Engineer

Public Notice: Bridge X-20 Closure

Distributed: February 15, 2013

Location Map: Closure of County Bridge X-20 on Berry Road between Armstrong Road and Sherman Ridge Road.



X:\Bridges\X_WANTAGE\X-20\01 Operations\10 Corr\2013 Closure\NTC_20130215_X20 Closure Public Notice.doc