



DEPARTMENT OF ENGINEERING AND PLANNING
One Spring Street
Newton, New Jersey 07860
973-579-0430
dpw@sussex.nj.us
Matthew Sinke, P.E.
Division Director/Assistant County Engineer

Construction Notice – Bridge O-07 Replacement **Distributed: September 22, 2017**

Project:

Replacement of Bridge O-07

Passaic Avenue, Ogdensburg Borough

Contractor:

Colonnelli Brothers., Inc. - \$1,396,361.50

Schedule:

- Construction Start & Road Closure – June 21, 2016
- Construction Resumption – October 26, 2016
- **Anticipated Road Opening – October 31, 2017**

Passaic Avenue Closure:

Passaic Avenue is currently fully closed to traffic at Bridge O-07. The road shall remain closed for the duration of construction with a posted detour via CR 517, Plant Street, and Brooks Flat Road.

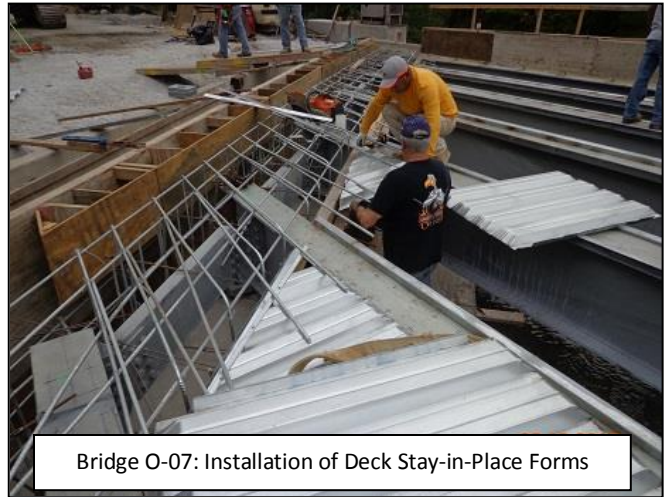
Construction Activities:

Bridge O-07

- ✓ Closure of Road and Implementation of Detour - **Complete**
- ✓ Remove Existing Structure – **Complete**
- ✓ Install Steel Sheet Pile Abutments & Wingwalls – **Complete**
- ✓ Construct Concrete Caps – **Complete**
- ✓ Install Abutment & Wingwall Concrete Fascia – **Complete**
- ✓ Install New Steel Beams – **Complete**
- **Construct Concrete Deck & Approach Slabs – In Progress**
 - Construct Concrete Pylons
 - Install Bridge Railing
 - Construct Concrete Keeper
- **Backfill and Grade Roadway – In Progress**
 - Final Paving and Landscaping
 - Guide Rail Installation
 - Open Roadway to Traffic

Contact Information:

For more information about this project please feel free to contact Siân Pearson, Principal Engineer, of the Sussex County Division of Engineering at 973-579-0430 or dpw@sussex.nj.us



Bridge O-07: Installation of Deck Stay-in-Place Forms



Bridge O-07: Installation of Shear Studs



Bridge O-07: General View of Site



DEPARTMENT OF ENGINEERING AND PLANNING
 One Spring Street
 Newton, New Jersey 07860
 973-579-0430
dpw@sussex.nj.us
 Matthew Sinke, P.E.
 Division Director/Assistant County Engineer

Construction Notice – Bridge O-07 Replacement Distributed: September 22, 2017

Bridge O-07 Passaic Avenue: Detour Map

