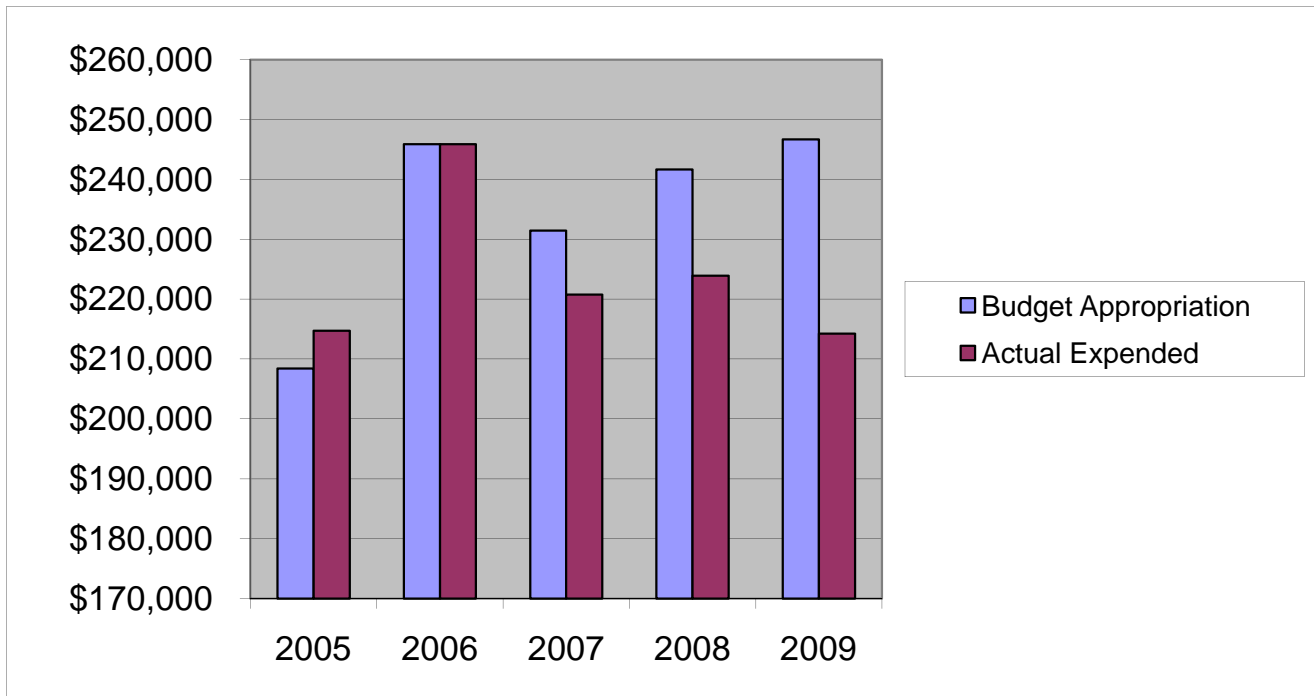


## ***BOARD OF ELECTIONS***

### ***Salaries & Wages***

	2005	2006	2007	2008	2009
Budget Appropriation	\$ 208,425.00	\$ 245,885.00	\$ 231,461.00	\$ 241,681.00	\$ 246,725.00
Actual Expended	\$ 214,728.94	\$ 245,883.60	\$ 220,751.76	\$ 223,917.20	\$ 214,262.39
Difference (App. - Exp.)	\$ (6,303.94)	\$ 1.40	\$ 10,709.24	\$ 17,763.80	\$ 32,462.61
% Expended	103.0%	100.0%	95.4%	92.6%	86.8%
Total Budget Approp.	\$ 92,061,376	\$ 98,126,692	\$ 102,912,559	\$ 107,848,203	\$ 107,667,916
% of Total Budget Approp.	0.23%	0.25%	0.22%	0.22%	0.23%
Five Year Average (Mean) Budget Appropriation:					\$ 234,835.40
Five Year Average (Mean) Budget Expended:					\$ 223,908.78
Difference:					\$ 10,926.62



<b>2010 BUDGET APPROPRIATION:</b>	<b>\$ 210,490</b>
2009 Budget Appropriation	\$ 246,725
\$ Change	\$ (36,235)
% Change:	-14.7%

2010 Budget Appropriation	\$ 210,490
2005 Budget Appropriation	\$ 208,425
\$ Change	\$ 2,065
% Change	1.0%