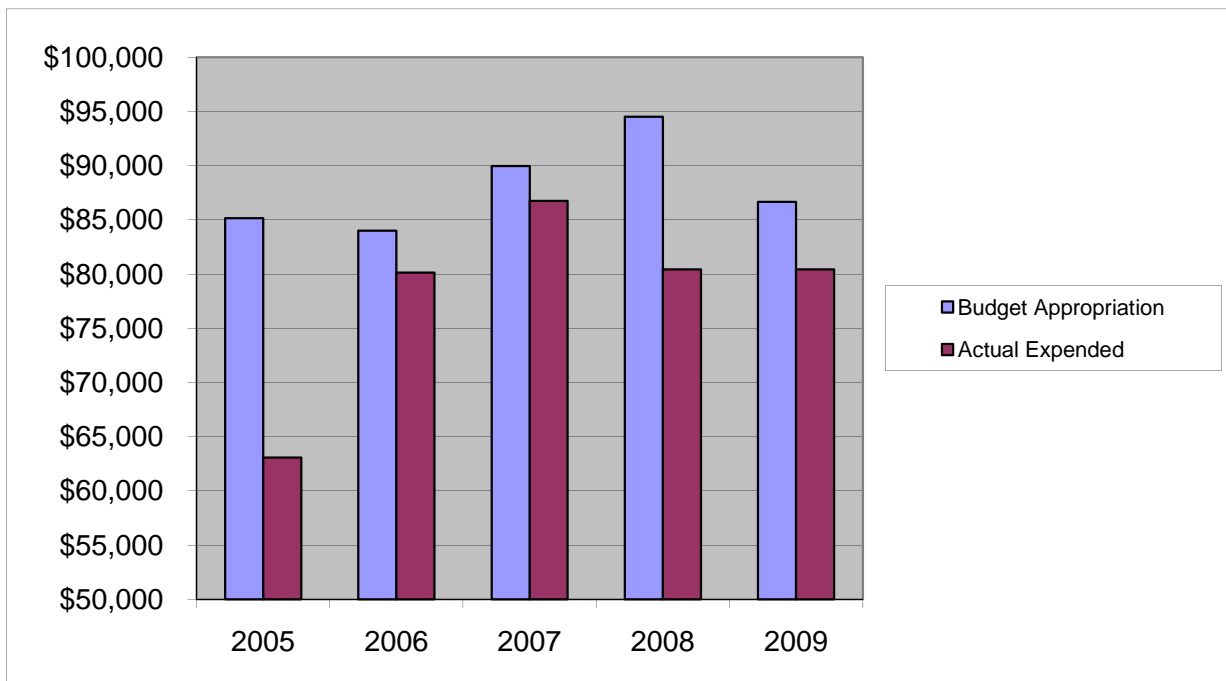


## ***COUNTY SUPT. OF SCHOOLS***

### ***Salaries & Wages***

	2005	2006	2007	2008	2009
Budget Appropriation	\$ 85,144.00	\$ 84,002.00	\$ 89,975.00	\$ 94,516.00	\$ 86,668.00
Actual Expended	\$ 63,065.37	\$ 80,121.68	\$ 86,755.91	\$ 80,418.20	\$ 80,435.76
Difference (App. - Exp.)	\$ 22,078.63	\$ 3,880.32	\$ 3,219.09	\$ 14,097.80	\$ 6,232.24
% Expended	74.1%	95.4%	96.4%	85.1%	92.8%
Total Budget Approp.	\$ 92,061,376	\$ 98,126,692	\$ 102,912,559	\$ 107,848,203	\$ 107,667,916
% of Total Budget Approp.	0.09%	0.09%	0.09%	0.09%	0.08%
Five Year Average (Mean) Budget Appropriation:					\$ 88,061.00
Five Year Average (Mean) Budget Expended:					\$ 78,159.38
Difference:					\$ 9,901.62



<b>2010 BUDGET APPROPRIATION:</b>	<b>\$ 73,308</b>
2009 Budget Appropriation	\$ 86,668
\$ Change	\$ (13,360)
% Change:	-15.4%

2010 Budget Appropriation	\$ 73,308
2005 Budget Appropriation	\$ 85,144
\$ Change	\$ (11,836)
% Change	-13.9%