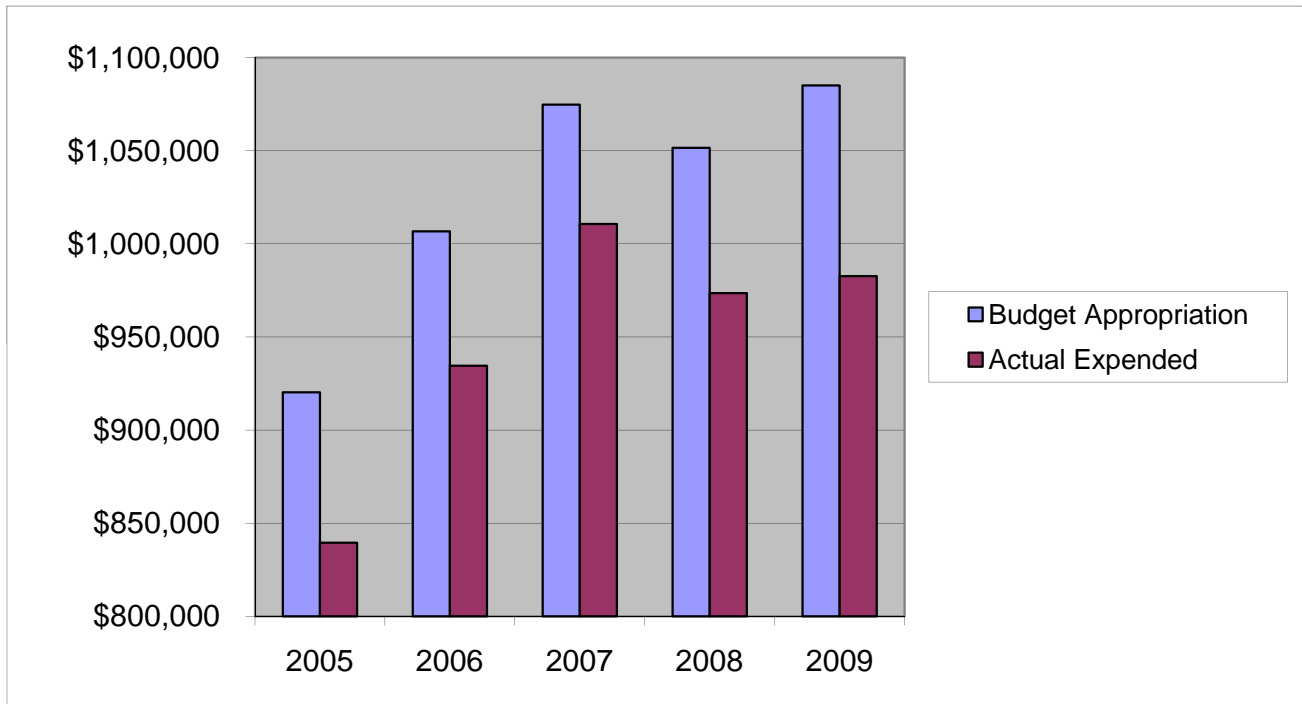


OTHER INSURANCE PREMIUMS

	2005	2006	2007	2008	2009
Budget Appropriation	\$ 920,315.00	\$ 1,006,709.00	\$ 1,074,763.00	\$ 1,051,493.00	\$ 1,085,000.00
Actual Expended	\$ 839,546.37	\$ 934,540.24	\$ 1,010,634.57	\$ 973,478.84	\$ 982,615.33
Difference (App. - Exp.)	\$ 80,768.63	\$ 72,168.76	\$ 64,128.43	\$ 78,014.16	\$ 102,384.67
% Expended	91.2%	92.8%	94.0%	92.6%	90.6%
Total Budget Approp.	\$ 92,061,376	\$ 98,126,692	\$ 102,912,559	\$ 107,848,203	\$ 107,667,916
% of Total Budget Approp.	1.00%	1.03%	1.04%	0.97%	1.01%
Five Year Average (Mean) Budget Appropriation:					\$ 1,027,656.00
Five Year Average (Mean) Budget Expended:					\$ 948,163.07
Difference:					\$ 79,492.93



2010 BUDGET APPROPRIATION:	\$ 1,127,217
2009 Budget Appropriation	\$ 1,085,000
\$ Change	\$ 42,217
% Change:	3.9%

2010 Budget Appropriation	\$ 1,127,217
2005 Budget Appropriation	\$ 920,315
\$ Change	\$ 206,902
% Change	22.5%