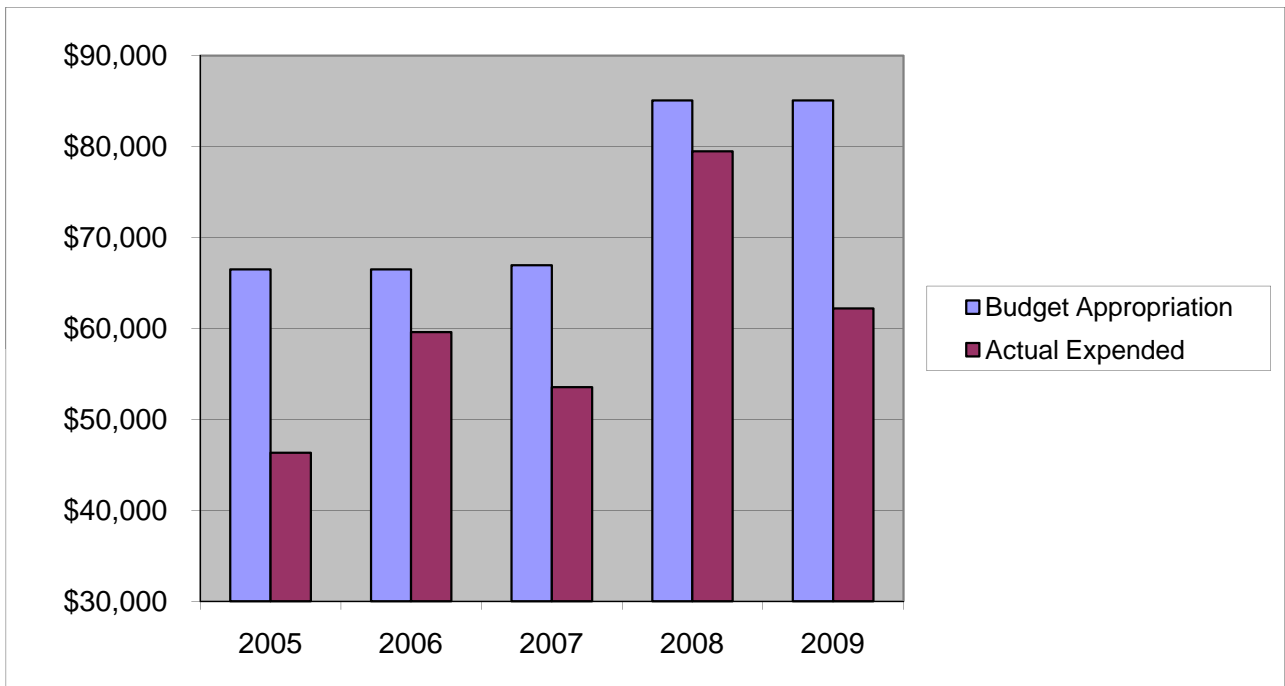


SHERIFF'S OFFICE - JUDICIAL
Other Expenses

	2005	2006	2007	2008	2009
Budget Appropriation	\$ 66,476.00	\$ 66,476.00	\$ 66,958.00	\$ 85,065.00	\$ 85,065.00
Actual Expended	\$ 46,340.54	\$ 59,578.71	\$ 53,554.65	\$ 79,461.61	\$ 62,202.65
Difference (App. - Exp.)	\$ 20,135.46	\$ 6,897.29	\$ 13,403.35	\$ 5,603.39	\$ 22,862.35
% Expended	69.7%	89.6%	80.0%	93.4%	73.1%
Total Budget Approp.	\$ 92,061,376	\$ 98,126,692	\$ 102,912,559	\$ 107,848,203	\$ 107,667,916
% of Total Budget Approp.	0.07%	0.07%	0.07%	0.08%	0.08%
Five Year Average (Mean) Budget Appropriation:					\$ 74,008.00
Five Year Average (Mean) Budget Expended:					\$ 60,227.63
Difference:					\$ 13,780.37



2010 BUDGET APPROPRIATION:	\$ 84,635
2009 Budget Appropriation	\$ 85,065
\$ Change	\$ (430)
% Change:	-0.5%

2010 Budget Appropriation	\$ 84,635
2005 Budget Appropriation	\$ 66,476
\$ Change	\$ 18,159
% Change	27.3%