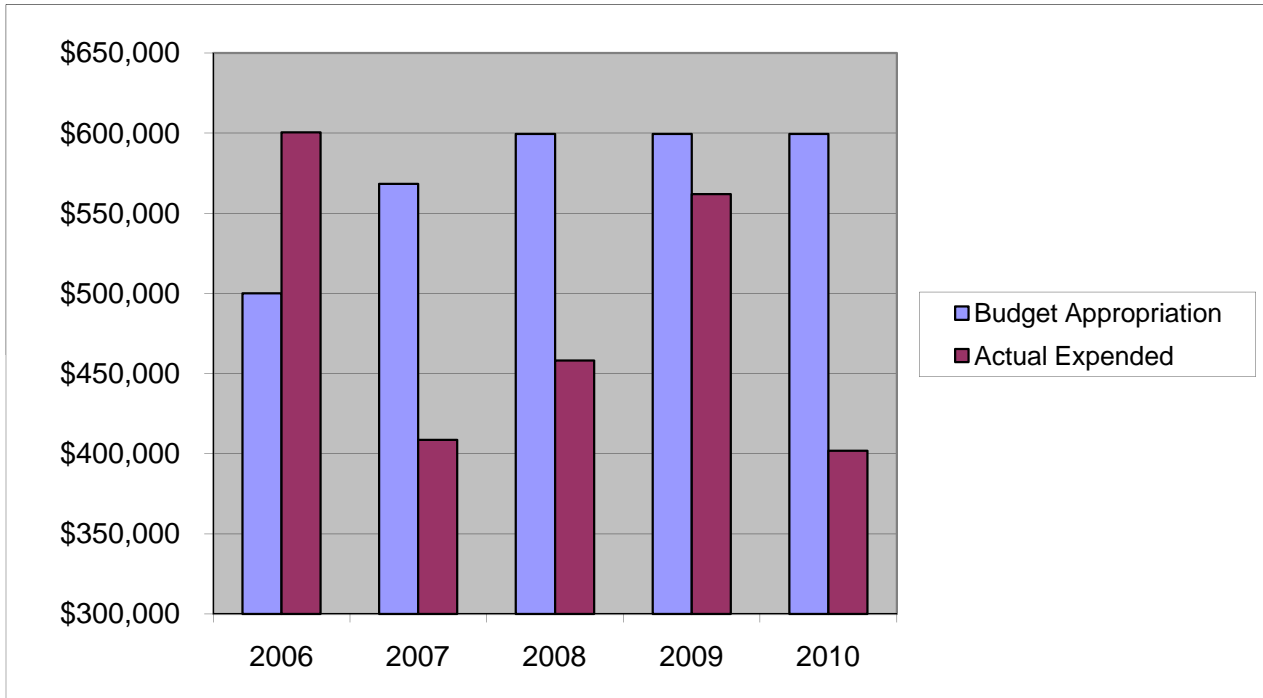


PROSECUTOR'S OFFICE

Other Expenses

	2006	2007	2008	2009	2010
Budget Appropriation	\$ 500,000.00	\$ 568,295.00	\$ 599,395.00	\$ 599,395.00	\$ 599,395.00
Actual Expended	\$ 600,475.86	\$ 408,549.30	\$ 458,033.52	\$ 562,038.24	\$ 401,811.58
Difference (App. - Exp.)	\$ (100,475.86)	\$ 159,745.70	\$ 141,361.48	\$ 37,356.76	\$ 197,583.42
% Expended	120.1%	71.9%	76.4%	93.8%	67.0%
Total Budget Approp.	\$ 98,126,692	\$ 102,912,559	\$ 107,848,203	\$ 107,667,916	\$ 108,900,890
% of Total Budget Approp.	0.51%	0.55%	0.56%	0.56%	0.55%
Five Year Average (Mean) Budget Appropriation:					\$ 573,296.00
Five Year Average (Mean) Budget Expended:					\$ 486,181.70
Difference:					\$ 87,114.30



2011 BUDGET APPROPRIATION:	\$ 499,395
2010 Budget Appropriation	\$ 599,395
\$ Change	\$ (100,000)
% Change:	-16.7%

Proposed 2011 Budget Appropriation	\$ 499,395
2006 Budget Appropriation	\$ 500,000
\$ Change	\$ (605)
% Change	-0.1%