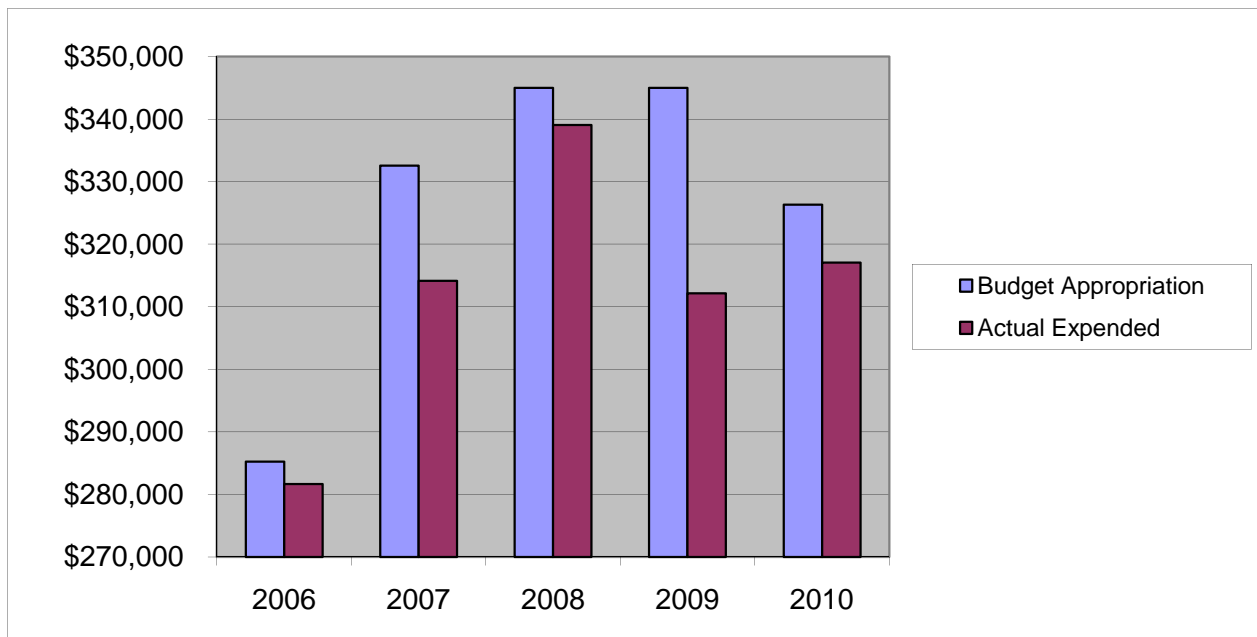


## ***TRAFFIC LIGHTS***

### ***Other Expenses***

	2006	2007	2008	2009	2010
Budget Appropriation	\$ 74,500.00	\$ 74,500.00	\$ 60,400.00	\$ 60,400.00	\$ 61,000.00
Actual Expended	\$ 56,616.64	\$ 59,222.64	\$ 57,520.12	\$ 60,010.81	\$ 51,575.32
Difference (App. - Exp.)	\$ 17,883.36	\$ 15,277.36	\$ 2,879.88	\$ 389.19	\$ 9,424.68
% Expended	76.0%	79.5%	95.2%	99.4%	84.5%
Total Budget Approp.	\$ 98,126,692	\$ 102,912,559	\$ 107,848,203	\$ 107,667,916	\$ 108,900,890
% of Total Budget Approp.	0.08%	0.07%	0.06%	0.06%	0.06%
Five Year Average (Mean) Budget Appropriation:					\$ 66,160.00
Five Year Average (Mean) Budget Expended:					\$ 56,989.11
Difference:					\$ 9,170.89



<b>2011 BUDGET APPROPRIATION:</b>	<b>\$ 57,455</b>
2010 Budget Appropriation	\$ 61,000
\$ Change	\$ (3,545)
% Change:	-5.8%

2011 Budget Appropriation	\$ 57,455
2006 Budget Appropriation	\$ 74,500
\$ Change	\$ (17,045)
% Change	-22.9%