



DEPARTMENT OF ENGINEERING AND PLANNING
 Division of Engineering
 One Spring Street
 Newton, New Jersey 07860
 973-579-0430
dpw@sussex.nj.us
 Matthew R. Sinke, P.E.
 Division Director/Assistant County Engineer

Rehabilitation of Bridge C-18

Distributed: August 16, 2019

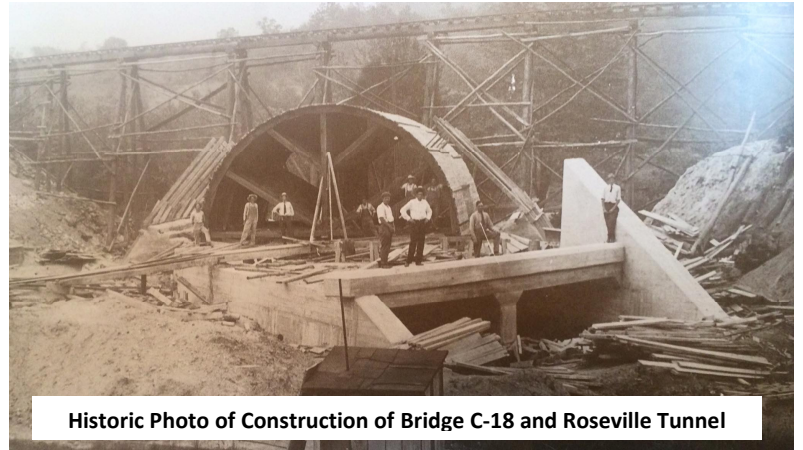
Project:

Rehabilitation of Bridge C-18

Carrying Roseville Road over Wolf Lake Inlet, Byram Township

Designer: Genesis Engineering, LLC, Lafayette, NJ

Contractor: Awarded to Sparwick Contracting, Inc., Lafayette, NJ for \$495,255.00



Historic Photo of Construction of Bridge C-18 and Roseville Tunnel

Construction Schedule:

Contract Award: August 14, 2019
 Construction Period: 120 Sequential Calendar Days
 Substantial Completion: November 30, 2020

Construction Funding:

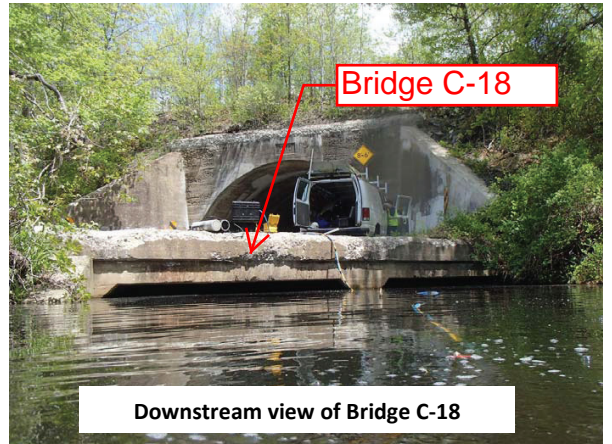
FY 2017 NJDOT LBFN Disc Grant:	\$470,000.00
Various County Capital Accounts:	\$ 25,255.00
TOTAL	\$495,255.00

Construction Activities:

- Install Soil Erosion & Sediment Control Measures
- Install Cofferdam & Dewater
- Clean & Restore Culvert Interior
- Demolish Existing Culvert Headwalls
- Construct Reinforced Concrete Culvert Headwalls
- Apply Stain Sealer to Exposed Concrete
- Install 4-Bar Bridge Rail
- Landscape & Perform Incidental Work Items

Traffic Impacts:

Roseville Road will remain open to traffic. A single lane traffic flagging operation will be implemented throughout the duration of construction as necessary.



Downstream view of Bridge C-18



Upstream view of Wolf Lake Inlet from Bridge C-18

For more information about this project please feel free to contact Susan Delmar, P.E., at the Sussex County Division of Engineering at 973-579-0430 or dpw@sussex.nj.us



DEPARTMENT OF ENGINEERING AND PLANNING
 Division of Engineering
 One Spring Street
 Newton, New Jersey 07860
 973-579-0430
dpw@sussex.nj.us
 Matthew R. Sinke, P.E.
 Division Director/Assistant County Engineer

Rehabilitation of Bridge C-18

Distributed: August 16, 2019

Location Map

