



DEPARTMENT OF ENGINEERING AND PLANNING  
Division of Engineering  
One Spring Street  
Newton, New Jersey 07860  
973-579-0430  
[dpw@sussex.nj.us](mailto:dpw@sussex.nj.us)  
Matthew R. Sinke, P.E.  
Division Director/Assistant County Engineer

## **Public Notice: Bridge D-18 Closure**

**Distributed: January 16, 2020**

### **Municipality:**

Frankford Township

### **Facility:**

#### **Bridge D-18 - TO BE CLOSED**

Carrying Fenwick Road over  
a Tributary of the Papakating Creek

### **Advisory:**

On or about December 30, 2019 the Sussex County Office of Bridge & Traffic Safety was notified that the upstream headwall on Bridge D-18 had failed, jeopardizing the adjacent bridge rail and roadway stability. An initial response resulted in a temporary closure to the upstream shoulder pending further evaluation. As a result of a further evaluation and, in the interest of public safety, Bridge D-18 has been closed pending such time as resources may become available to design and construct remedial measures capable of restoring operational safety to Bridge D-18.

### **Actions To Be Taken:**

- **BRIDGE CLOSURE:** On Thursday, January 16, 2020, Bridge D-18 on Fenwick Road (between Armstrong Road and Gorney Road) will be closed to through traffic using temporary signs and barricades.
- Notification of Municipality and deployment / posting of the closure.

### **Follow Up Actions:**

Following the closure of Bridge D-18 options for interim and / or permanent repairs to reopen Bridge D-18 to vehicular traffic will be prioritized within the bridge system work queue in consideration of other transportation system needs and the prioritized allocation of available resources.

### **Contact Information:**

For more information about this project please feel free to contact Matt Sinke, Assistant County Engineer, of the Sussex County Division of Engineering at 973-579-0430 or by email at [dpw@sussex.nj.us](mailto:dpw@sussex.nj.us).



Bridge D-18: Upstream Headwall Prior to Failure



Bridge D-18: Temporary Shoulder Closure in Place



Bridge D-18: Upstream Fascia after Headwall Failure

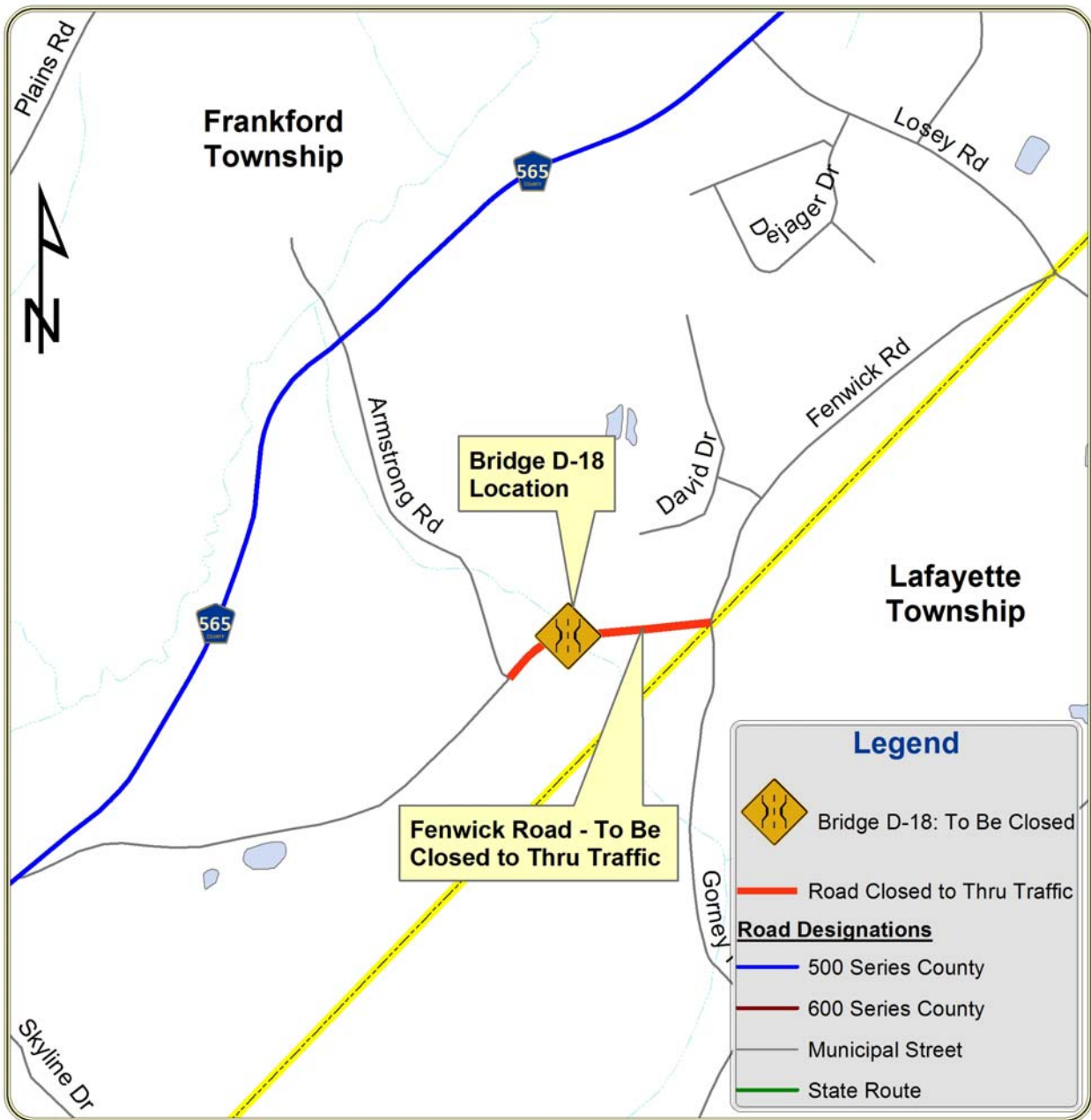


DEPARTMENT OF ENGINEERING AND PLANNING  
 Division of Engineering  
 One Spring Street  
 Newton, New Jersey 07860  
 973-579-0430  
[dpw@sussex.nj.us](mailto:dpw@sussex.nj.us)  
 Matthew R. Sinke, P.E.  
 Division Director/Assistant County Engineer

**Public Notice: Bridge D-18 Closure**

**Distributed: January 16, 2020**

**Bridge D-18 - Fenwick Road: Closure Map**



N:\04 Asset\02 Bridge\D\_FRANKFORD\D-18\01 Operations\2020 Closure\NTC\_20200115\_D18 Closure Public Notice.doc