



DEPARTMENT OF ENGINEERING AND PLANNING
 Division of Engineering
 One Spring Street
 Newton, New Jersey 07860
 973-579-0430
dpw@sussex.nj.us
 Matthew R. Sinke, P.E.
 Division Director/Assistant County Engineer

Rehabilitation of Bridge C-18

Distributed: September 18, 2020

Project:

Rehabilitation of Bridge C-18

Carrying Roseville Road over Wolf Lake Inlet, Byram Township

Designer: Genesis Engineering, LLC, Lafayette, NJ

Contractor: Awarded to Sparwick Contracting, Inc., Lafayette, NJ, for \$495,255.00

Preliminary Construction Schedule:

Contract Award: August 14, 2019
 Start Construction: July 7, 2020
 Construction Period: 120 Sequential Calendar Days
 Substantial Completion: November 30, 2020

Construction Funding:

FY 2017 NJDOT LBFN Disc Grant:	\$470,000.00
Various County Capital Accounts:	\$ 25,255.00
TOTAL	\$495,255.00

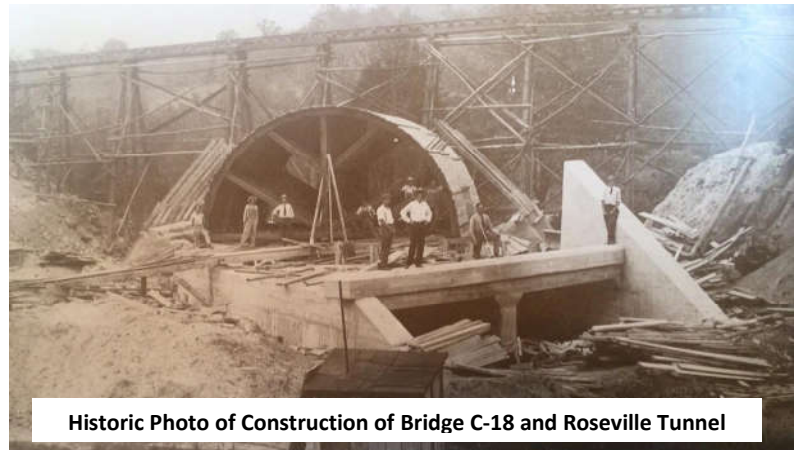
Construction Activities:

- ✓ Install Soil Erosion & Sediment Control Measures – *Completed*
- ✓ Install Cofferdam & Dewater – *Completed*
- Clean & Restore Culvert Interior – *In Progress*
- Demolish Existing Culvert Headwalls – *In Progress*
- Construct Reinforced Concrete Culvert Headwalls
- Apply Stain Sealer to Exposed Concrete
- Install Chain Link Fencing / Gates
- Landscape & Perform Incidental Work Items

Traffic Impacts:

Roseville Road and the Roseville Road tunnel will remain open to traffic and accessible.

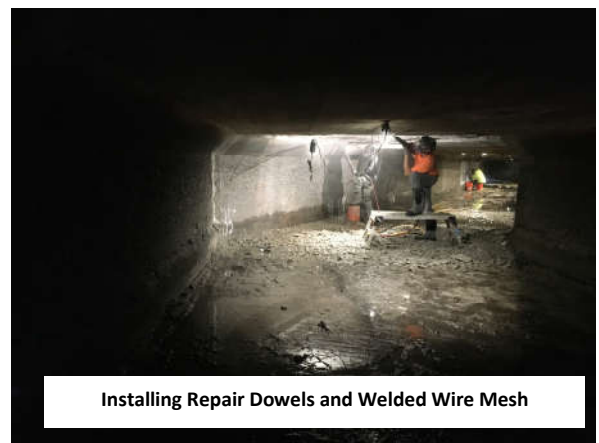
A single lane traffic daytime flagging operation will be implemented throughout the duration of construction as necessary.



Historic Photo of Construction of Bridge C-18 and Roseville Tunnel



Spall Area Cleaned & Prepped for Repair



Installing Repair Dowels and Welded Wire Mesh

For more information about this project please feel free to contact Susan Delmar, P.E., at the Sussex County Division of Engineering at 973-579-0430 or dpw@sussex.nj.us



DEPARTMENT OF ENGINEERING AND PLANNING
Division of Engineering
One Spring Street
Newton, New Jersey 07860
973-579-0430
dpw@sussex.nj.us
Matthew R. Sinke, P.E.
Division Director/Assistant County Engineer

Rehabilitation of Bridge C-18

Distributed: September 18, 2020

Location Map

