



DEPARTMENT OF ENGINEERING AND PLANNING
Division of Engineering
One Spring Street
Newton, New Jersey 07860
973-579-0430
dpw@sussex.nj.us
Matthew R. Sinke, P.E.
Division Director/Assistant County Engineer

Construction Notice – Repair of Bridge D-17

Distributed: September 29, 2020

Project:

Bridge D-17 Headwall & Guide Rail Repairs

Linn Smith Road, Frankford Twp.

Advisory:

As a result of a recent motor vehicle accident (MVA), Bridge D-17 and the adjacent guide rail have sustained damage and need to be repaired. During construction, traffic flow through the area will be controlled utilizing temporary traffic signals to maintain an alternating two-way, single-lane work zone until the bridge and guide rail restoration work is completed.

Construction Forces:

- Sussex County Office of Bridge & Traffic Safety
- Sussex County Division of Public Works

Schedule:

- Work is preliminarily scheduled to begin on or about Monday, October 5, 2020
- Anticipated duration of construction work is approximately 6-8 weeks

Traffic Control:

- Work will be completed utilizing staged construction and alternating, signal-controlled, single lane traffic (See Bottom Photo at Right)
- Sussex County portable traffic signal trailers and all necessary signage will be deployed to control motorists through the work zone
- Work will be completed in two phases (one phase for north/westbound work and one for south/eastbound work)

Construction Activities:

- Install portable traffic signals and temporary traffic control devices for signal controlled work zone
- Remove/repair/replace damaged guide rail, guide rail posts, and concrete headwall along N/WB shoulder
- Remove/repair/replace damaged guide rail, guide rail posts, and concrete headwall along S/EB shoulder

Contact Information:

For more information about this project please feel free to contact Joshua Roe, Assistant Engineer, of the Sussex County Division of Engineering at 973-579-0430 or dpw@sussex.nj.us



Bridge D-17 – Downstream (North/Westbound) Headwall and Guide Rail Prior to MVA



Bridge D-17 – Downstream (South/Eastbound) Headwall and Guide Rail After MVA



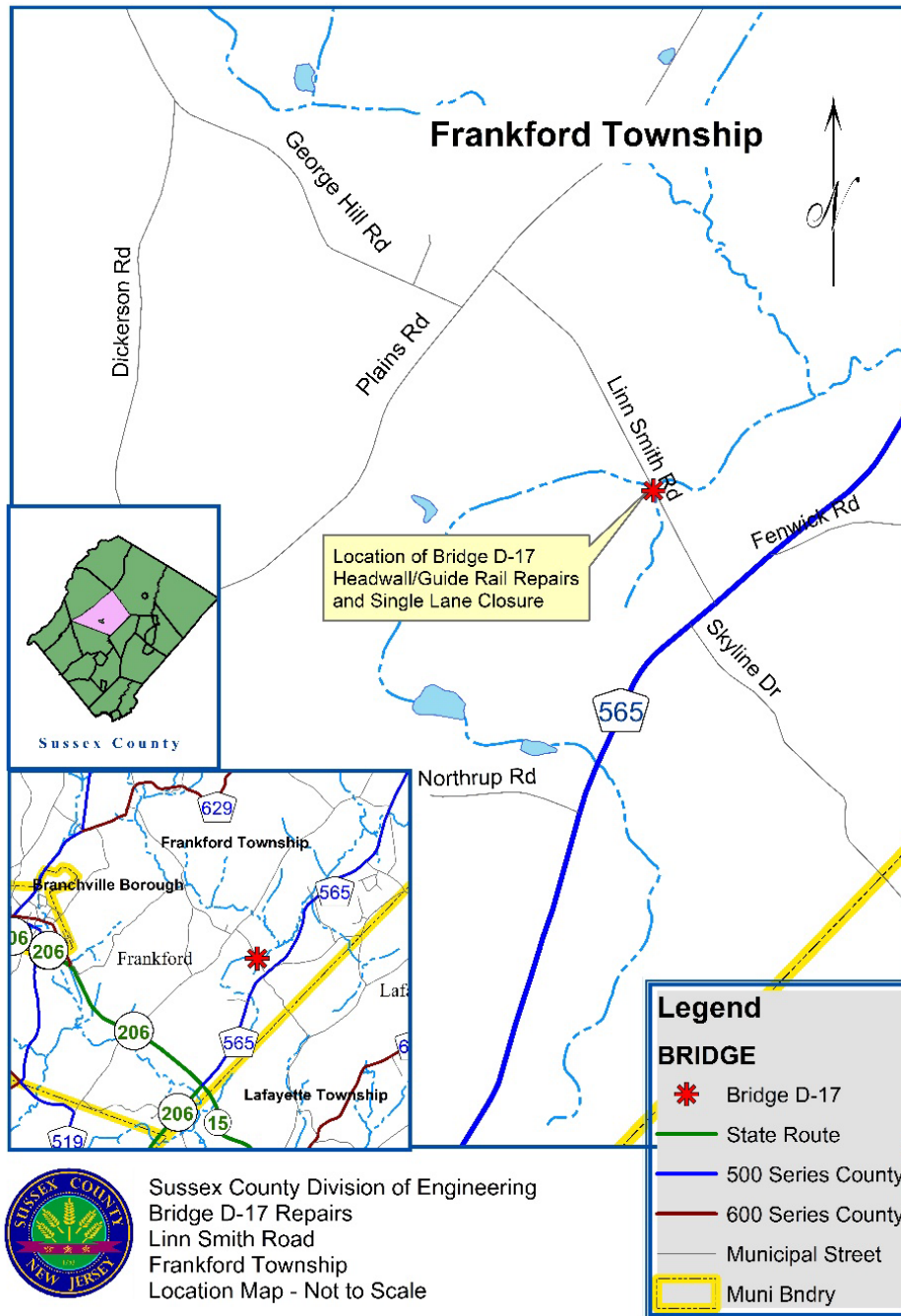
Example of a Typical Single Lane, Signal-Controlled, Work Zone Deployed at another Bridge Work Zone



DEPARTMENT OF ENGINEERING AND PLANNING
 Division of Engineering
 One Spring Street
 Newton, New Jersey 07860
 973-579-0430
dpw@sussex.nj.us
 Matthew R. Sinke, P.E.
 Division Director/Assistant County Engineer

Construction Notice – Repair of Bridge D-17 **Distributed: September 29, 2020**

Bridge D-17, Linn Smith Rd., Frankford Township: Location Map



Sussex County Division of Engineering
 Bridge D-17 Repairs
 Linn Smith Road
 Frankford Township
 Location Map - Not to Scale

N:\04 Asset\02 Bridge\D_FRANKFORD\D-17\CORR\Public Notice\20200928_PBL NTC_D-17_H.W. & G.R. Repairs.docx