



DEPARTMENT OF ENGINEERING AND PLANNING
Division of Engineering
One Spring Street
Newton, New Jersey 07860
973-579-0430
dpw@sussex.nj.us
Matthew R. Sinke, P.E.
Division Director/Assistant County Engineer

Replacement of Signal SC-36 – Project Notice Distributed: October 27, 2021

Project:

Replacement of Signal SC-36

Intersection of CR-607, Crescent Road, and Lakeside Blvd.
Hopatcong Borough

Designer: Boswell Engineering

Contractor: Awarded to FAI-GON Electric for \$449,042.30 at the 8/11/2021 Board of County Commissioners Meeting

Anticipated Schedule:

Construction is expected to commence Spring 2022. An updated notice will be distributed once a construction start date is finalized.

Traffic Impacts: EXPECT DELAYS.

Most work conducted under shoulder closures and single lane closures.

Construction Funding:

FY 2019 NJDOT LAIF Disc Grant:	\$250,000.00
Various County Capital Accounts:	\$199,042.30
TOTAL	\$449,042.30

Construction Activities:

- Inlet Work
- Installation of Curbing, Sidewalk, Curb Ramps, and Pavers (to match adjacent Hopatcong Streetscape)
- Installation of Underground Electrical / Signal Components
- Installation of Aboveground Electrical / Signal Components
- Removal of Existing Signal Equipment
- Final Milling and Paving
- Striping and Pavement Markings
- Final Site Cleanup

Contact Information:

For more information about this project please feel free to contact Abanoub Ayoub, Civil Engineer Trainee at the Sussex County Division of Engineering at 973-579-0430 or emails can be sent to dpw@sussex.nj.us



Signal SC-36 Looking North



Signal SC-36 Looking South



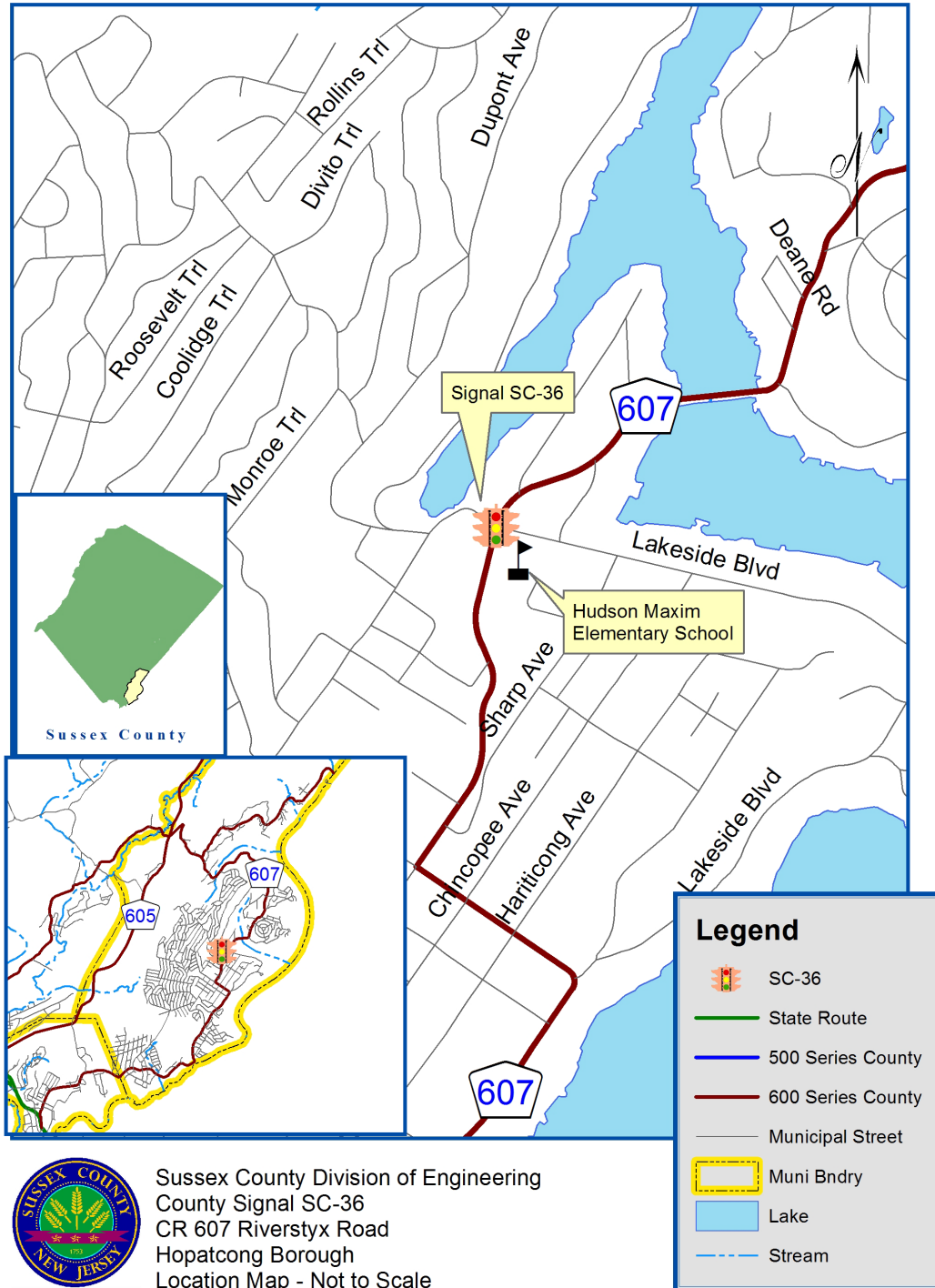
Signal SC-36 Looking South



DEPARTMENT OF ENGINEERING AND PLANNING
 Division of Engineering
 One Spring Street
 Newton, New Jersey 07860
 973-579-0430
dpw@sussex.nj.us
 Matthew R. Sinke, P.E.
 Division Director/Assistant County Engineer

Replacement of Signal SC-36 – Project Notice Distributed: October 27, 2021

Location Map



Sussex County Division of Engineering
 County Signal SC-36
 CR 607 Riverstyx Road
 Hopatcong Borough
 Location Map - Not to Scale