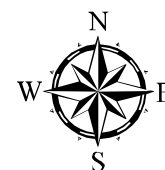
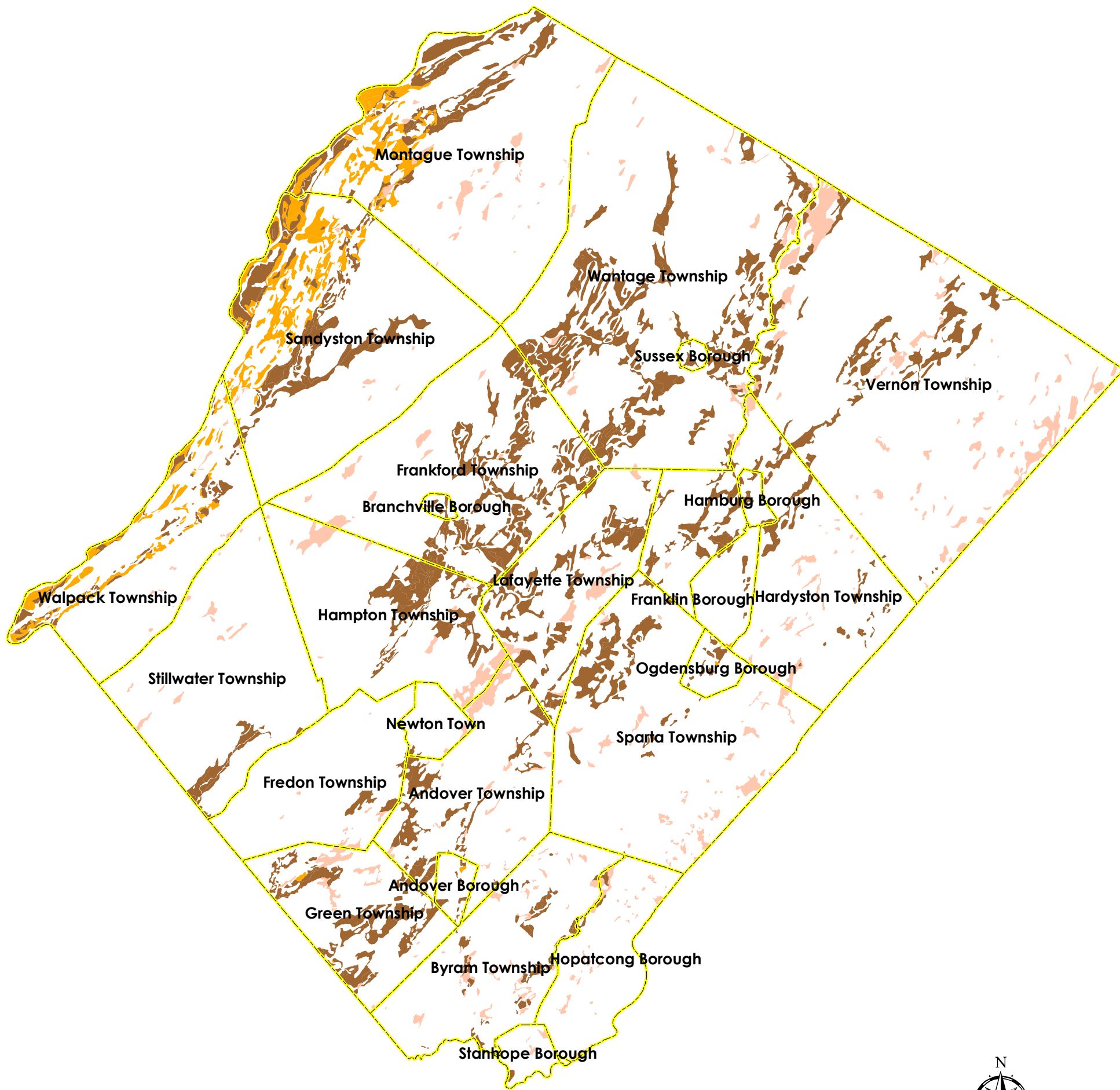


MAPS

- a. Farmland Soils
- b. Agriculture Development Areas (ADA)
- c. Proposed Project Areas
- d. Candidate QFarm Qualified Parcels

FARMLAND SOILS

Sussex County, New Jersey



- Prime Farmland Soils
- Soils of Statewide Importance
- Soils of Unique Importance
- Municipal Boundaries

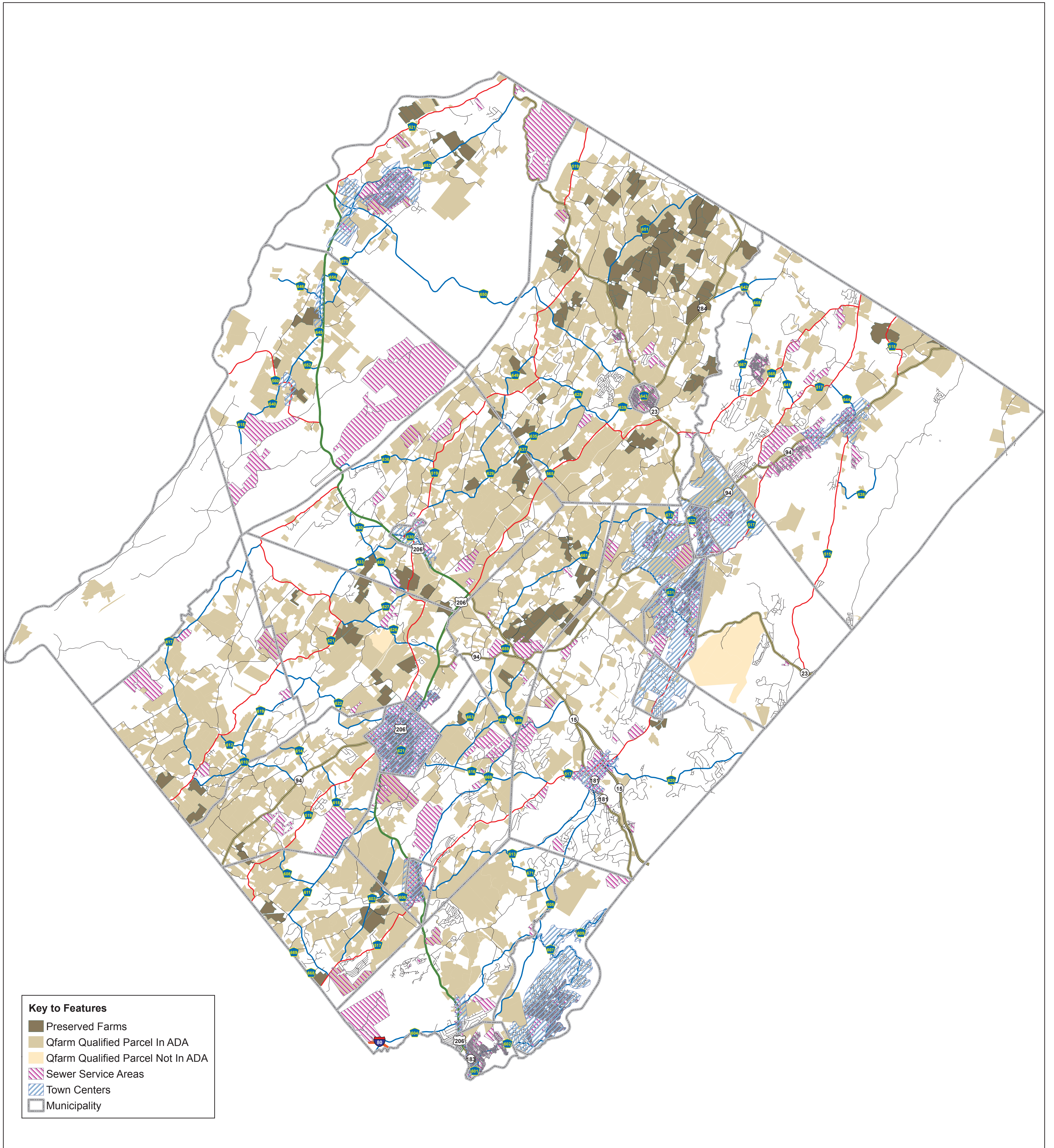


ARESTY MAPPING CENTER
 MORRIS LAND CONSERVANCY
 19 Boonton Ave.
 Boonton, NJ 07005
 Map Prepared July 10, 2007

Data Source: Office of GIS Management, County of Sussex;
 NJDEP, NRCS Soil Survey


This map was developed using New Jersey Department
 of Environmental Protection Geographic Information
 System digital data, but this secondary product has not
 been verified by the NJDEP and is not state-authorized.

"This map is to be used solely for planning purposes, and
 does not take the place of a survey."

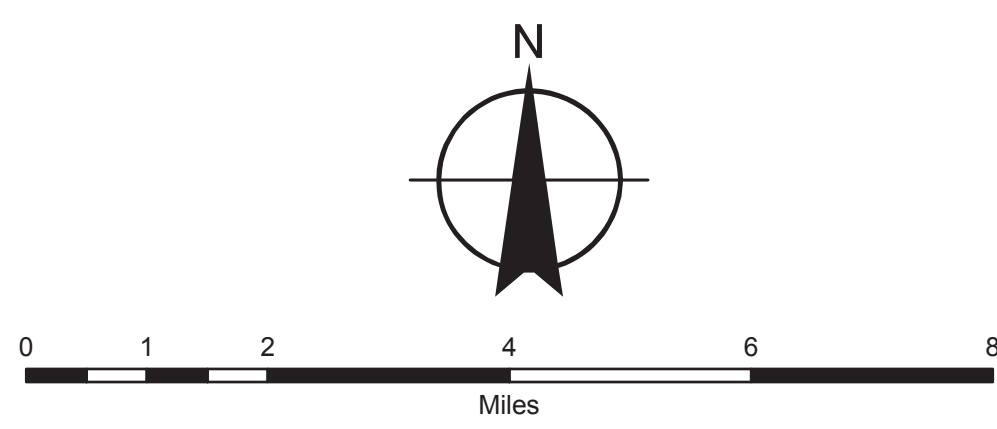


This map was created using data developed by Sussex County, NJDCA, and NJDOT. Information contained within this map has not been verified or authorized by any of the secondary parties.

Due to inconsistencies in the parcel data and origin of data sources, the data on this map may not identify all q-farm assessed properties, preserved farms, or accurate town center boundaries.



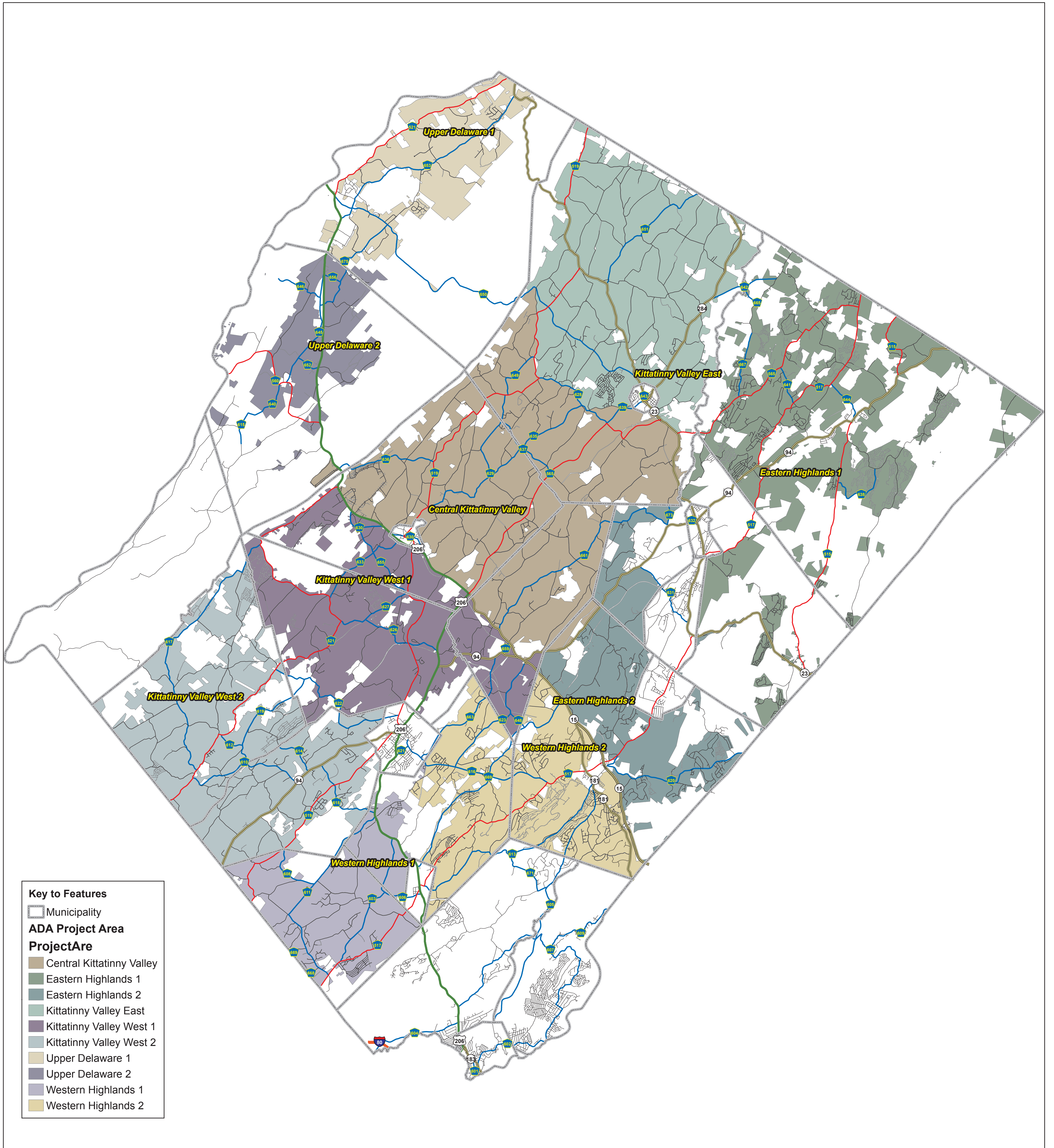
Office of GIS Management
Division of Engineering
Department of Engineering and Planning




Sussex County -- People & Nature Together

Comprehensive Farmland Preservation Plan

Agriculture Development Areas

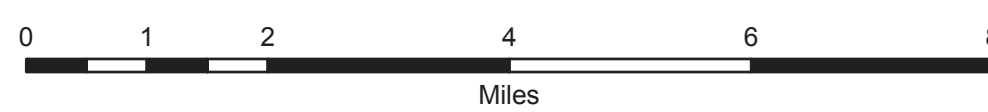


Key to Features

- Municipality
- ADA Project Area**
- Project Area**
- Central Kittatinny Valley
- Eastern Highlands 1
- Eastern Highlands 2
- Kittatinny Valley East
- Kittatinny Valley West 1
- Kittatinny Valley West 2
- Upper Delaware 1
- Upper Delaware 2
- Western Highlands 1
- Western Highlands 2

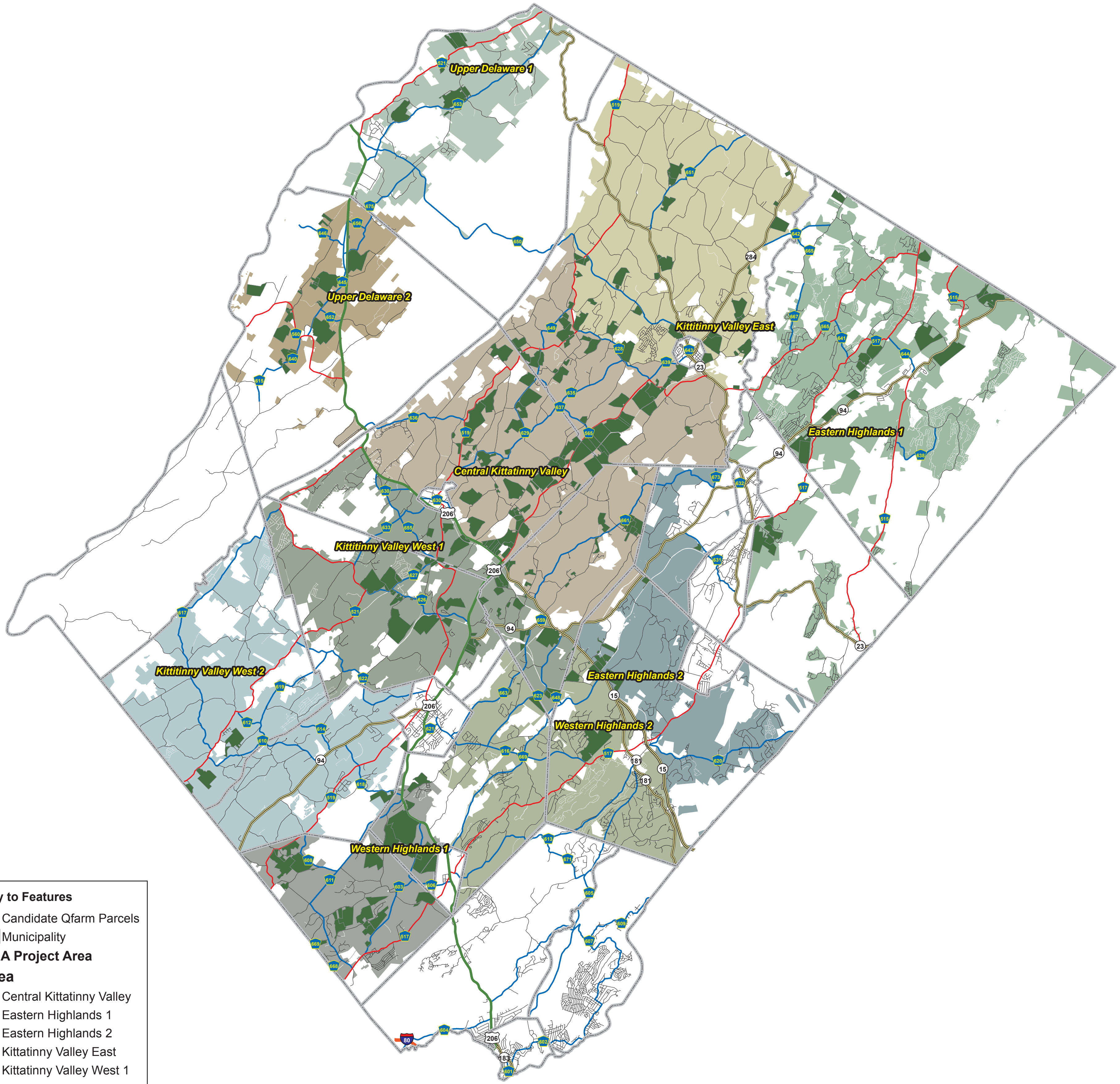
This map was created using data developed by Sussex County, NJDCA, and NJDOT. Information contained within this map has not been verified or authorized by any of the secondary parties.

Due to inconsistencies in the parcel data and origin of data sources, the data on this map may not identify all q-farm assessed properties, preserved farms, or accurate town center boundaries.



Comprehensive Farmland Preservation Plan

Proposed Project Areas



Key to Features

- Candidate Qfarm Parcels
- Municipality

ADA Project Area

Area

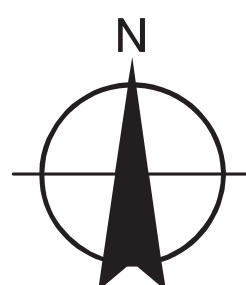
- Central Kittinginny Valley
- Eastern Highlands 1
- Eastern Highlands 2
- Kittinginny Valley East
- Kittinginny Valley West 1
- Kittinginny Valley West 2
- Upper Delaware 1
- Upper Delaware 2
- Western Highlands 1
- Western Highlands 2

This map was created using data developed by Sussex County and NJDOT. Information contained within this map has not been verified or authorized by any of the secondary parties.

Due to inconsistencies in the parcel data and origin of data sources, the data on this map may not identify all q-farm assessed properties, preserved farms, or accurate town center boundaries.



Office of GIS Management
Division of Engineering
Department of Engineering and Planning



**Comprehensive Farmland
Preservation Plan**

**Candidate Qfarm
Qualified Parcels**